

PC Connection Manual

You can transfer images and movies captured with a digital camera to your computer and then organize, display, edit, print, and share them by installing the software recorded on the provided CD-ROM to your computer and connecting your digital camera to your computer with the USB cable. This section explains how to install the provided software "ACDSee for PENTAX" and the other necessary preparations for enjoying your digital camera pictures and movies on your computer. Refer to your manual for the instructions of your computer and OS. QuickTime™ and QuickTime logo are trademarks used under license. The QuickTime logo is registered in U.S. and other countries.

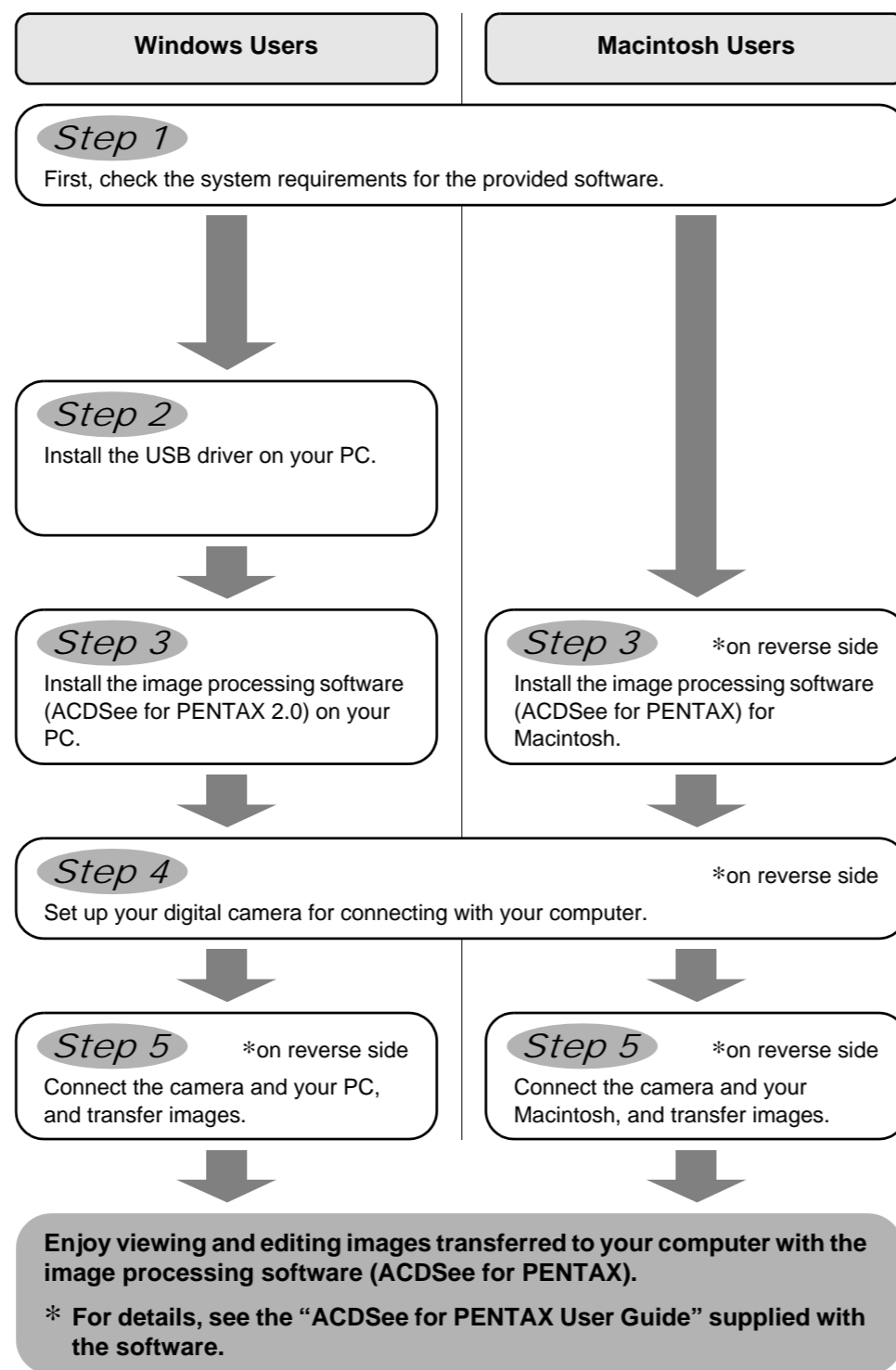
Software Provided

Windows

- ACDSee for PENTAX 2.0 (Image viewing/editing software)
- ACD photostitcher (Panorama image editing software)
- FotoSlate 3.0 (Image layout and printing software)
- ACD Showtime! for PENTAX (Movie editing software)
- Windows Media Player
- DirectX
- USB driver for Windows 98/98SE

Macintosh

- ACDSee for PENTAX (Image viewing software)
- ACD photostitcher (Panorama image editing software)



Windows, Macintosh Step 1

System Requirements

Windows System Requirements

- The software cannot be used on Windows 95.
- In order to play movies on Windows 98SE/Me/2000/XP, you are required to install Windows Media Player 9.0 or later. (CPU: Pentium4 2.0GHz or higher, or PentiumM 1.0GHz or higher recommended)
- You cannot play movies shot by Optio S5z on Windows 98/NT.

USB connection

- OS : Windows 98/98SE/Me/2000/XP (Home Edition/Professional) (USB driver must be installed on Windows 98/98SE)
- USB port must be standard equipment

Application Software

<ACDSee for PENTAX 2.0, ACD photostitcher and FotoSlate 3.0>

(9 languages: English, French, German, Spanish, Italian, Russian, Chinese [traditional and simplified], Korean, Japanese)

- OS : Windows 98SE/Me/NT/2000/XP (Home Edition/Professional)
- CPU : Pentium or higher recommended
- Memory : 64MB minimum
- Hard Disk space : 40MB minimum
- Monitor : Display adapter capable of displaying a minimum of 256 colors
- Internet Explorer 5.0 or later

* Some formatted files like MOV-formatted movie files are required to have QuickTime 6.0 or later, DirectX 9.0 or later, Windows Media Player 7.1 or later, to display.

* To install ACDSee for PENTAX 2.0, Windows Installer Service Version 2.0 may be required.

* ACD Showtime! for PENTAX is also installed when performing standard installation of ACDSee for PENTAX 2.0 (However, ACD Showtime! for PENTAX cannot be used if system requirements are not met.)

* Operation is not guaranteed on all PCs meeting the system requirements.

<ACD Showtime! for PENTAX>

(6 languages: English, French, German, Spanish, Italian, Japanese)

- OS : Windows 98SE/Me/NT/2000/XP (Home Edition/Professional)
- CPU : Pentium III 500MHz or higher (Pentium4 2.0GHz or higher recommended)
- Memory : 128MB minimum (512MB or higher recommended)
- Hard Disk space : 50MB minimum
- Monitor : Display adapter capable of displaying a minimum of 256 colors
- Internet Explorer 5.0 or later
- QuickTime 6.0 or later
- Windows Media Player 7.1 or later
- DirectX 9.0 or later

The versions of Internet Explorer, Windows Installer Service required for use of ACDSee for PENTAX 2.0 and ACD Showtime! for PENTAX are not included in the provided CD-ROM (S-SW35). These can be downloaded from the following sites and installed.

- Internet Explorer
http://www.microsoft.com/ie
- Windows Installer Service
http://support.microsoft.com/default.aspx?scid=kb;EN-US;292539

Macintosh System Requirements

You cannot play movies shot by OptioS5z on a Macintosh.

USB connection

- OS : Mac OS 9.2/X (Ver. 10.1, 10.2, 10.3)
- USB port must be standard equipment
- * Installation of the driver is not necessary.

Application Software

<ACDSee for PENTAX and ACD photostitcher>

(6 languages: English, French, German, Spanish, Italian, Japanese)

- OS : Mac OS 9.2 or later (requires QuickTime 6 or later and the latest version of CarbonLib)
- CPU : PowerPC 266MHz or higher
- Memory : 8MB minimum
- Hard Disk space : 6MB minimum
- * Operation is not guaranteed on all PCs meeting the system requirements.

Windows Step 2

Installing the USB Driver

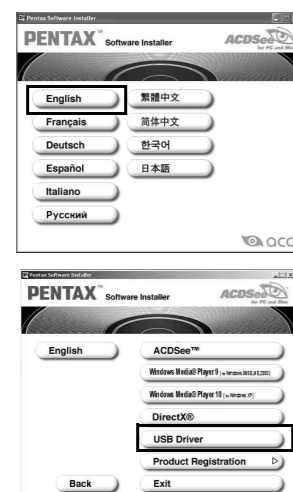
For Windows98/98SE users, it is necessary to install a USB driver into your computer. If you are a Windows Me/2000/XP user, turn on your computer first and start from Step 6 in the instruction.

- 1 Turn on your computer.
- 2 Insert the CD-ROM (S-SW35) into your CD-ROM drive. The PENTAX Software Installer screen is displayed on the desktop.

- If the PENTAX Software Installer screen does not appear Display the PENTAX Software Installer screen following the steps below.
 - 1) Click [Start], then select [My Computer].
 - 2) Double-click the CD-ROM Drive (S-SW35) icon.
 - 3) Double-click [Setup] (Setup.exe).

3 Click your applicable language.

You can choose the languages from the displayed screen. A selection screen to install your desired software is displayed.



4 Click [USB Driver] on the Software Installer screen

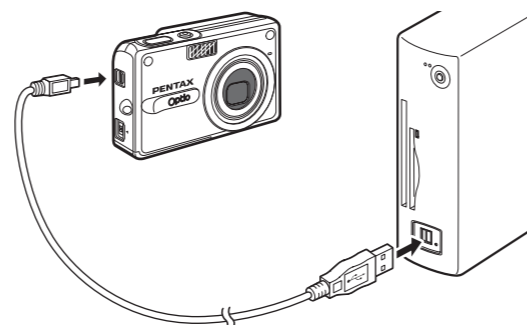
The InstallShield Wizard screen will appear. Follow the instruction on the screen. Complete InstallShield Wizard screen will appear.

5 Click [Finish].

Reboot your computer after the screen closes.

6 Turn your camera off and plug the provided USB cable into your camera and into an available USB port on your computer.

Confirm that the USB Connection mode is set to [PC] before connecting the USB cable. Default setting is [PC].



7 Turn your camera on.

Your computer will automatically detect the camera as new hardware and window will display a notification confirming [Hardware Found : PENTAX OPTIO S5z] (Windows Me/2000/XP) or [Search for the best driver for your device (Recommended)] (Windows 98/98SE) in the task bar recognized area to begin the installation.

8 Click [Start], then select [My Computer] (Windows XP).

When using Windows 98/98SE/Me/2000, double-click [My Computer] on the desktop. When the installation is completed, your camera can then be found in the [My Computer] window as [Removable Disk]. Be sure that [Removable Disk] is displayed in the [My Computer] window.

Windows Step 3

Installing the Software

Installing the Image Processing Software (ACDSee for PENTAX 2.0)

This section describes the procedures for installing ACDSee for PENTAX 2.0, which lets you view and edit images transferred to your PC.

- Windows Media Player 7.1 or later must be installed in your PC to install ACDSee for PENTAX 2.0.
- When multiple accounts have been setup in Windows 2000 or Windows XP, log on with an account that has administrative rights before installing the software.

- 1 Turn your PC on.
- 2 Insert the CD-ROM (S-SW35) into the CD-ROM drive. The PENTAX Software Installer screen appears shortly.

- If the PENTAX Software Installer screen does not appear Display the PENTAX Software Installer screen following the steps below.
 - 1) Double-click [My Computer] on the desktop.
 - 2) Double-click the [CD-ROM drive (S-SW35)] icon.
 - 3) Double-click [Setup.exe].

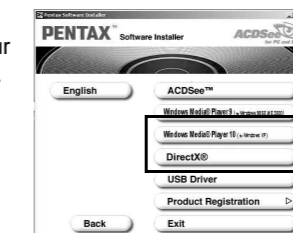
3 You can choose the languages from the displayed screen.

The software selection screen appears.

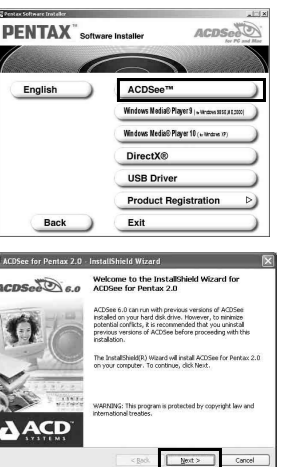


4 Install Windows Media Player and DirectX.

If Windows Media Player and DirectX are not installed in your PC, install them before installing ACDSee for PENTAX 2.0. Click [Windows media player] or [DirectX]. Leave other settings at default and click [Next] when the Setup screen appears. When installation is completed, the software selection screen reappears.



- 5 Click [ACDSee™]. Follow the on-screen guidance and enter the registration information when the Setup screen appears. Reboot your PC after installation is finished (Other settings are not necessary during installation).



If your PC is running Windows Media Player earlier than version 7.1, a message such as the one shown on the right may appear during installation.

In this case, follow the instructions below to update Windows Media Player before installing the software.

- 1 Cancel installation of ACDSee for PENTAX. [Cancel] and click [Finish] when the message appears telling you that the software has been successfully installed.
- 2 Follow 4 in Step 3 to install Windows Media Player first and then reinstall ACDsee for PENTAX2.0.

The panoramic image software "ACD photostitcher", the image layout and printing software "FotoSlate 3.0", and the movie editing software "ACD Showtime! for PENTAX" are also installed when you install all program features of ACDSee for PENTAX 2.0 (complete installation).

Even when you complete the installation the icon of "ACD Photostitcher" is not displayed.

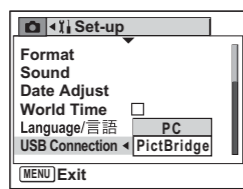
If QuickTime and DirectX are not installed in your PC, a message such as the one shown on the right appears when ACDSee for PENTAX 2.0 is run for its first time. Click [Close] and install DirectX from the [PENTAX Software Installer] screen.

* If DirectX is not installed in your PC, operation of ACDSee for PENTAX 2.0 is not guaranteed.

Setting Up Your Digital Camera

Setting the USB Connection Mode to [PC]

- 1 Press the MENU button.
- 2 Press the four-way controller (▶) to display the [X Setting] menu.
- 3 Use the four-way controller (▲▼) to select [USB Connection].
- 4 Press the four-way controller (▶). A pop-up menu appears.
- 5 Use the four-way controller (▲▼) to select [PC].
- 6 Press the OK button.



- Do not connect the camera to your PC while [PictBridge] is selected for the USB Connection mode.
- Do not connect the camera to your printer while [PC] is selected for the USB Connection mode.

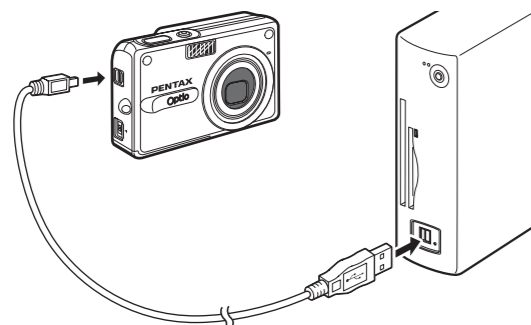
Transferring Images to a Windows PC

If you connect your computer to the camera and as the power is switched on, the camera will be recognized automatically. You can transfer an image to your computer after ACDSee Device Searching display appears on the screen.

- If the digital camera is connected to your PC in [PictBridge] USB Connection mode, the images cannot be transferred. Disconnect the USB cable from your camera and PC, follow the instructions in "Setting Up Your Digital Camera" to set the USB Connection mode to [PC], and then reconnect the USB cable.
- We recommend using an AC Adapter D-AC8 (optional) when connecting your camera to your computer. Your image data could be corrupted if your batteries run out during image transfer.

Connecting the Camera and PC

- 1 Turn your PC on.
- 2 With your camera turned off, connect to your PC using the USB cable.

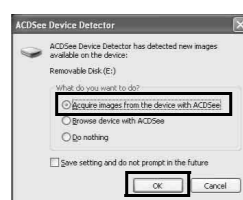


- 3 Turn your camera on. The ACDSee Device Detector screen appears automatically. If the ACDSee Device Detector screen does not appear, display and copy the images following the steps in "When the ACDSee Device Detector screen does not appear".

- While communicating with your computer via a USB cable, the status lamp blinks green.
- If there is no SD Memory Card in the camera, the images stored in the built-in memory will be transmitted to your PC.
- Even if camera images are not transferred, they can be directly displayed on the computer from a camera connected to the computer.
- When you edit an image, transfer the image to your computer.

Transferring Images

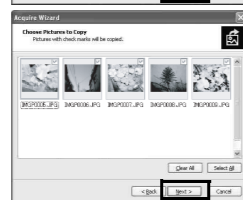
- 4 Confirm that [Acquire images from the device with ACDSee] is checked and click [OK].



- 5 Click [Next].

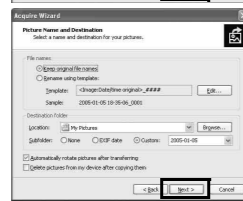


- 6 Select an image to copy and click [Next].



- 7 Specify the name and save destination of the image, and click [Next].

The image is copied to the PC.



- 8 Click [Finish].

The ACDSee for PENTAX 2.0 Browser starts.



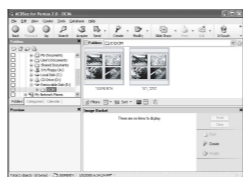
When the ACDSee Device Detector screen does not appear

- 4 Double-click the [ACDSee for PENTAX] icon on the desktop.
- 5 Double-click [My Computer].
- 6 Double-click [Removable Disk].

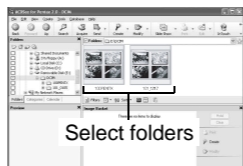


If the SD Memory Card has a volume label, the volume label name appears instead of [Removable Disk]. A new unformatted SD Memory Card may show the manufacturer name or model number.

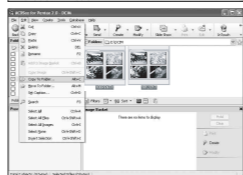
- 7 Double-click the [DCIM] folder. Images are stored in folder [xxxPENTX], where "xxx" is a three-digit folder number.



- 8 Select the folders you want to copy to the PC. Hold the [Ctrl] key on the keyboard while clicking on the folders in which the images you want to copy are stored.



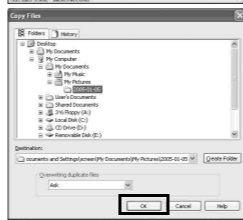
- 9 Select [Copy To Folder...] from the [Edit] menu. The Copy Files screen appears.



- 10 Specify the destination folder.

- 11 Click [OK].

The image is copied to the PC.



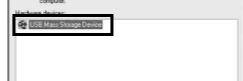
Disconnecting the Camera from Your PC

Windows XP

- 1 Double-click the [Safely Remove Hardware] icon in the task bar. The Safely Remove Hardware screen appears.
- 2 Select [USB Mass Storage Device] and click [Stop]. The [Stop a Hardware device] screen appears.



- 3 Select [USB Mass Storage Device] and click [OK]. A message appears to indicate that the hardware can be safely removed.



- 4 Disconnect the USB cable from your PC and the camera.

Windows 2000/Me

- 1 Double-click the [Unplug or eject hardware] icon in the task bar. The Unplug or Eject Hardware screen appears.
- 2 Select [USB Mass Storage Device] and click [Stop]. The Stop a Hardware device screen appears.

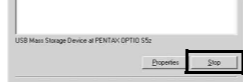


- 3 Select [USB Mass Storage Device] and click [OK]. A message appears indicating that the hardware can be safely removed.



- 4 Click [OK].

- 5 Disconnect the USB cable from your PC and the camera.



- If the camera (removable disk) is being used by an application such as ACDSee for PENTAX 2.0, the camera cannot be disconnected until the application is closed.
- When you remove a USB cable, the USB mode will be cancelled, switching to Playback mode with the lens retracted.

Installing the Software

Installing the Image Processing Software (ACDSee for PENTAX)

This section describes the procedures for installing ACDSee for PENTAX, which lets you view and edit images transferred to your Macintosh.

- 1 Turn your Macintosh on.
- 2 Insert the CD-ROM (S-SW35) into the CD-ROM drive.
- 3 Double-click the CD-ROM (S-SW35) icon.
- 4 Double-click the [Install ACDSee] icon. The PENTAX Software Installer screen appears. Double-click the [Master Installer] icon to display the PENTAX Software Installer screen.
- 5 You can choose the languages from the displayed screen. A selection screen to install your desired software appears.



- 6 Click [ACDSee™]. The setup screen appears. Follow the on-screen guidance to input registration information and install the software.

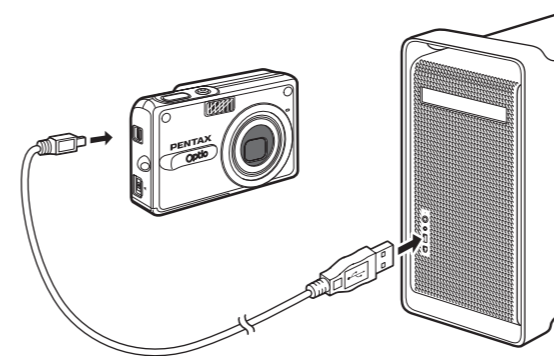


Transferring Images to a Macintosh

- If you connect the camera to a Macintosh with the USB connection mode set to [PictBridge], you cannot transfer an image. Remove the camera from the Macintosh and then set the USB mode to [PC]. Reconnect the USB cable by referring to "Setting Up Your Digital Camera" in this manual.
- We recommend using an AC Adapter D-AC8 (optional) when connecting your camera to your computer. Your image data could be corrupted if your batteries run out during image transfer.

Connecting the Camera and Macintosh

- 1 Turn your Macintosh on.
- 2 With your camera turned off, connect to your Macintosh using the USB cable.



- 3 Turn your camera on. The camera is recognized as [untitled] ([NO_NAME] in Mac OS X) on the desktop. The drive name can be changed.



- If the SD Memory Card has a volume label, the volume label name appears instead of [untitled]. A new unformatted SD Memory Card may show the manufacturer name or model number.
- While communicating with a Macintosh via a USB cable, the status lamp blinks green.
- If there is no SD Memory Card in the camera, the images stored in the built-in memory will be transmitted to your Macintosh.



- If the message [CarbonLib-xxxxx could not be found] appears during installation; You must add the extension file "CarbonLib" to the Extension folder in the System folder in order to install the provided software in Mac OS 9.2. This message appears when this extension file does not exist or when an older version of the file exists. The latest version of the CarbonLib file is available on the Apple website. Download the file and then install it. Apple website: <http://www.apple.com/> *Contact Apple for detailed information on how to use the CarbonLib file.
- If you install ACDSee for PENTAX, a photo-stitching software application, ACD photostitcher, is installed at the same time.
- When you have completed the installation, folder will be created in ACDSee for PENTAX. To run ACD photostitcher, double-click [ACD photostitcher] icon in the [ACD photostitcher] folder.

Transferring Images

It is convenient to use iPhoto, ImageCapture, or ACDSee Device Detector when you transfer an image to your Macintosh. See your Macintosh user's manual.



- Even if camera images are not transferred, they can be directly displayed on the Macintosh from a camera connected to the Macintosh.
- To edit images, first transfer them to your Macintosh.

Disconnecting the Camera from Your Macintosh

- 1 Drag [untitled] on the desktop to the trash. If the SD Memory Card has a volume label, drag the icon of that name to the trash.
- 2 Disconnect the USB cable from your Macintosh and the camera.



- If the camera (removable disk) is being used by an application such as ACDSee for PENTAX, the camera cannot be disconnected until the application is closed.
- When you remove a USB cable, the USB mode will be cancelled, switching to Playback mode with the lens retracted.

Product Registration on the Internet

Please click [Product Registration] on the software selection screen in Step 3. A world map for Internet Product Registration is displayed.



If your PC is connected to the Internet, click the displayed country or region and then follow the instructions to register your product.

Thank you very much for your cooperation.



Only customers in displayed countries and regions can register their products on the Internet Product Registration.