

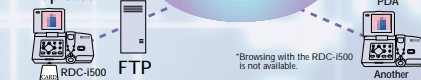


The RDC-i500 offers three key ways to send images to others.

E-mail



FTP uploads



Direct PC transfers

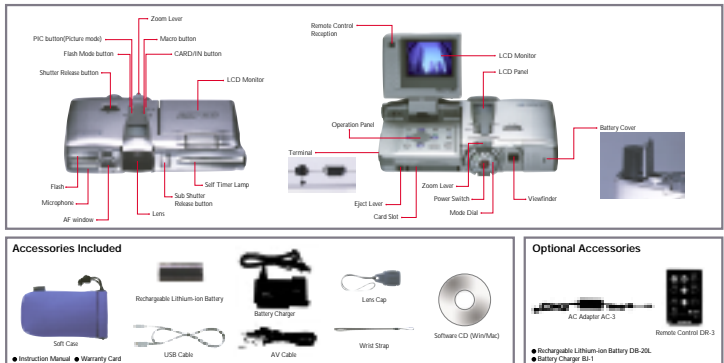


*Browsing with the RDC-i500 is not available.

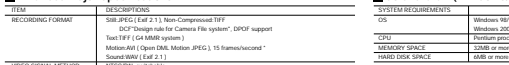
Another RDC-i500*



in the picture.



Accessories included



■ RDC-i500 Major Specifications	
ITEM	DESCRIPTION
RECORDING FORMAT	Still JPEG (Exif 2.1), Non-Compressed TIFF DCF Design rule for Camera File system*, DPOF support *Full P1 (CA-MIF system) Motion AVI (Quick Time Motion JPEG), 15 frames/second* Support MP4 (Exif 2.1)
VIDEO SIGNAL METHOD	NTSC/PAL (Auto)
RECORDING MEDIUM	Internal Memory / Compact Flash Card, Microdrive
CCD	1/4.8 million pixels with 2,288,000 approx. equivalent (effective pixels)
RESOLUTION	Still: 2048 x 1536 / 1024 x 768 Motion: 1024 x 288
RECORDING MODE	SHUTTER PRIORITY (MATRIX) / VOICE RECORDATION WITH SILENCE CONTINUOUS MODE
PICTURE MODE	Image Stabilization / Image Compression
LENS	F2.8-3.4, 10 glass elements in 7 groups
ZOOM	Optical Zoom: 4.7x (2.7-12.8mm) (5x (35mm equivalent)) Digital: 1.5, 1.8, 2.2x zoom (Equivalent 645 x 485 pixels)
SHUTTER	Still: 8, 4, 2, 1-1/6000sec. (mechanical shutter) Motion: 1/25-1/2000sec. (Electronic shutter)
SHOOTING RANGE	24mm (1.4m) (at Wide) / Micro Approx. from 0.4m (1.4m) (1.4m)
ISO SENSITIVITY	Auto (ISO100-1600), Manual (ISO100-4000)
OPTICAL VIEWFINDER	Viewfinder, Dispenser Adjuster (2-1/4x)
MONITOR DISPLAY	2" TFT LCD (260,000 pixels)
BULB FLASH	Auto (FLASH) / MANUAL / SYNCHRO / RED-EYE REDUCTION, Manual strength adjustable (SOF (FORBID/BLK/STRONG))
FOCUS	Auto (FACE/SMILE/SMILE/FOCUS LOCK/SMILE 2nd - 3rd)
EXPOSURE MODE	Programmed AE, Exposure Locking system (CENTER/SPOT/MATR)
EXPOSURE LOCKING	Auto/Manual, Auto (FACE/SMILE/SMILE/FOCUS LOCK/SMILE 2nd - 3rd) (1/6000 sec)
WHITE BALANCE	Auto, Daylight, Cloudy, Shaded, Incandescent, Fluorescent, Manual
SELF TIMER	Aperture: 15sec. delay
OTHER FEATURES	ONE SHOT/ AUTO SHOOTER / MONITOR/SHOOT MODE (Still/Snap) INTERNAL MODE / Time Lapse from 30-second intervals up to 3 hours SOFT MODE, IMAGE EXPOSURE MODE, SPRAWLING functions, SPX SCREEN MODE
INTERFACES	PC: USB, Video Out, Audio Out
EXTENSION SLOT	Compact Flash card slot
BATTERY	Supporting Card Module, Cellular LAN (compatible products only)
OPERATIONS (ON/OFF)	Rechargeable Lithium-ion Battery
WEIGHT	Approx. 255g (5.5oz) (with battery)
OPERATING MODE, Zoom and Flash do not work and the focus is locked in the state in which the release button was pressed.	

■ Camera Softwares	
INTERNET MAIL	POP
INTERNET MAIL	Protocol: POP3/SIMP
RECORDING MODE	Recording: JPEG
DIRECT UPLOAD	Protocol: Ricoh original
RANGE EDITING	Size Change, Rotation and Video Memo annotation
USB Narr. FUNCTION	Image capture, Guide Note, HTML File Creation

■ Software CD (Windows/Macintosh)		
SYSTEM REQUIREMENTS	WINDOWS	MACINTOSH
OS	Windows XP/Vista/Windows Server 2003, Windows Me-11	Mac OS 9-10
CD-ROM	Minimum required	CD-ROM
MEMORY SPACE	256K or more (4MB recommended)* Hard Disk Space	2MB or more 2MB or more

■ Compatible Products	
Memory Card*	Type
Compact Flash	Sambal Model name
Microdrive	Linear Media, Inc. (SOF) model Compact Flash (SOF) (MS-DOS) (2/120MB)
	2.8MB, 4.5MB
Communication Card*	Type
Wireless LAN	Compact Card Module 58 GigaBACCESS
Cellular	Prolec Electronics Corp. (IC-ONE Technology Corp.) Compact Module
	Compact Card GSM
LAN	Socitel Communications, Inc. Low Power Ethernet
	Compact Card GSM Ether 10

- Compact Flash: SB-201, Rechargeable Lithium-ion Battery
- Microdrive: DB-201, Rechargeable Lithium-ion Battery
- Cellular: DB-3, Battery
- Wireless LAN: AC-3, AC Adapter

*In motion picture mode, zoom and flash do not work and the focus is locked in the state in which the release button was pressed.

■ Accessories included	
Soft Case	Rechargeable Lithium-ion Battery
USB Cable	Battery Charger
Wrist Strap	Lens Cap
Software CD (Windows)	AV Cable
	Remote Control CP-3
	Battery Charger BA-1

■ Software CD (Windows/Macintosh)		
SYSTEM REQUIREMENTS	WINDOWS	MACINTOSH
OS	Windows XP/Vista/Windows Server 2003, Windows Me-11	Mac OS 9-10
CD-ROM	Minimum required	CD-ROM
MEMORY SPACE	256K or more (4MB recommended)* Hard Disk Space	2MB or more 2MB or more

■ Compatible Products	
Memory Card*	Type
Compact Flash	Sambal Model name
Microdrive	Linear Media, Inc. (SOF) model Compact Flash (SOF) (MS-DOS) (2/120MB)
	2.8MB, 4.5MB
Communication Card*	Type
Wireless LAN	Compact Card Module 58 GigaBACCESS
Cellular	Prolec Electronics Corp. (IC-ONE Technology Corp.) Compact Module
	Compact Card GSM
LAN	Socitel Communications, Inc. Low Power Ethernet
	Compact Card GSM Ether 10

■ RDC-i500 Optional Accessories	
MODEL	Type
DB-201	Rechargeable Lithium-ion Battery
DB-3	Battery
	Remote Control
AC-3	AC Adapter

For more information, visit http://www.ricoh.co.jp/r_dc/icd

This brochure was printed on recycled paper.



Capture, process, and send images on the fly.

Printed in Japan 2001-03001

http://www.ricoh.co.jp/r_dc/icd

3.34-megapixel resolution

3X optical zoom

One-centimeter macros

Text, motion and voice memo, and annotation modes

Split-screen shooting

E-mail capability*

Upload to your website*

Direct transfer to PC via telephone line*

* See remarks at "Network".



Automated image management and HTML conversion

Manage folders

Capture Images

Enjoy top resolution and flexibility.

3.34-megapixel, 3X optical zoom performance

The 3.34-megapixel CCD delivers photo-quality resolution of up to 2048 x 1536 pixels. The 3x optical zoom lens is equivalent to 35-105mm on a 35mm film camera. This gives you the flexibility you need in almost any shooting situation. And because it is optical, the zoom maintains sharp resolution across its range.



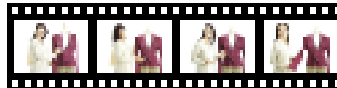
One-centimeter macros



Macros are perfect for revealing unusual detail. The RDC-i500 lets you get as close as about 1cm (0.4 inch) from a subject without losing the definition you enjoy at normal shooting distances.

Text, motion, and voice memo modes

Ricoh's document technology lets you crisply capture text in black and white. WAV-format voice memos and an AVI movie capturing capability add realism and impact. You can annotate stills with sound or use the Voice Memo feature to record thoughts on the run.



*Motion picture

Split-screen shooting



You can use this capability to capture two images that you can show simultaneously, either on the top and bottom or left and right. This is very handy for presentations when you need to make it easier to understand product details.

Multi-angle monitor

The 2.0-inch LCD screen swivels to let you take shots accurately from the most challenging angles. The 200,000 pixel, active matrix screen provides the accuracy and detail you need to check shot quality or review results.

Manage Data

Keep everything at your fingertips.

JOB Navi., your virtual assistant

Build an Image Capture Guide List

The RDC-i500 Software CD includes an application that lets you build an Image Capture Guide List on a Windows PC. Simply follow the list when taking shots and transfer images to the PC, where they link automatically with the source file. This is perfect for creating a database or product list.

Use the Guide List function to handle large jobs :



Convert automatically to HTML

The JOB Navi. function is also useful for quickly auto-generating an HTML file. Just select captured images and slot them into an HTML template, and you're now ready to upload to the Internet.

PC-connectivity



To improve productivity, you can link the RDC-i500 to a PC via a LAN or USB connection¹⁾. Open the PC's web browser²⁾ to handle images and even copy them to the hard disk. You can use the browser to modify communications settings and input preset memos. The software pack includes the Explorer Plug-In for Windows and a Mac application called RDC-i Mounter. Installed on a PC, you can operate the RDC-i500 like an external disc drive.

¹⁾ The RDC-i500 does not have a serial port.

²⁾ Netscape Communicator (Navigator) 4.7 or later, or Internet Explorer 5 or later is required.

Folder management

A folder management facility helps organize image files for easy access. You can store each new image in a specified folder. You can add folders based on the standard DCF format.

Network

Share information fast.

E-mail



*E-mail operations

E-mail stills, movies, texts, and voice memos. You can simplify e-mailing by setting up your dial-up account, address book, and preset memos on your PC. Quick Send makes light work of sending files to your company while on the road or to other addresses you

commonly transmit to. This feature lets you send a still to a preregistered address just by pressing a few buttons. You can also input addresses and messages directly on the RDC-i500. You may send your high-resolution images, or to facilitate faster transfer, have the camera automatically create a lower resolution copy that is better suited for e-mail and photo sharing.

E-mail your images



Send e-mail via the Internet

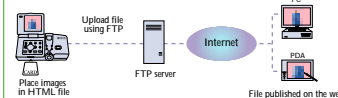


Image received

FTP uploads

The JOB Navi. HTML file creation function lets you select multiple images and post them directly to your website. Customizable templates control the links with selected files and thumbnail creation automatically. FTP uploading is perfect for updating websites quickly and directly, wherever you are.

Upload your images to your website:



Direct PC transfers

Install dial-up server software on a modem-equipped PC and transfer data directly to receiver's computer. Data security assured due to no server interference.

Transmit your images to a PC :



Remarks

- * You will need a Compact Flash communications card to e-mail or upload files from the RDC-i500.
- * You can use communication cards that Ricoh has verified as compatible with the RDC-i500.
- * To use Internet e-mail, you will need a mail account with an Internet Service Provider (ISP) that uses SMTP POP protocols with DNS. Some mail providers, such as America Online™, may not fully support the requirements and cannot be used with the RDC-i500.
- * The download limit to the RDC-i500 is 300KB per file.
- * To use Direct Upload, you must install the direct transmission application from the Software CD on the PC.
- * File selections when sending are from internal memory only.

Keep everyone in the picture.