

RICOH

CX2

28-300mm Optical 10.7x Zoom
Smooth Imaging Engine IV
CMOS Image Sensor
3.0-inch 920,000-dot VGA LCD monitor





Record the feeling of openness and freedom, as experienced.

f=28mm 1/710sec F3.5 ISO100 EV±0 WB: Multi-Pattern AUTO



Dramatically portray the dynamic relationship of light and dark.

Dynamic range double shot mode f=28mm 1/1230sec F3.5 ISO80 EV-1.3 WB: Multi-Pattern AUTO



Find beyond the lens a world overlooked until now.

f=105mm 1/1000sec F4.8 ISO100 EV+0.3 WB:AUTO



Experience a new way of seeing that leaves you straining to see more.

Miniaturize f=28mm 1/760sec F3.5 ISO80 EV+0.7 WB: Multi-Pattern AUTO

Whether at wide-angle or telephoto,
be free to frame your excitement and discovery.

10.7x

Willfully capture the world as you want to see it. 28-300 mm 10.7x optical zoom

From wide-angle images of wide-open landscapes to powerful telephoto shots, you can see things from your own perspective, every day. High magnification 10.7x optical wide-angle zoom in a thin 29.4 mm body that is both easy to operate and easy to carry.



28mm

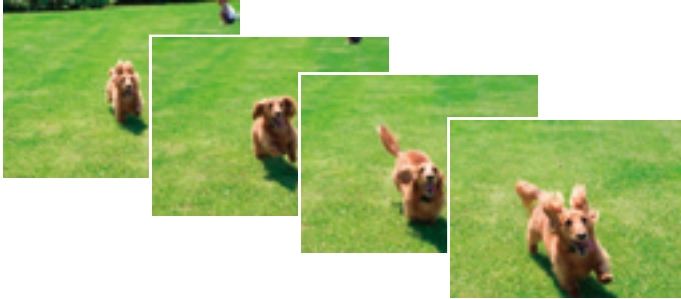


300mm

Rapid continuous shooting with the highest level of image quality. <5 frame/sec. high-speed continuous shooting at maximum pixels>

With the CX2's enhanced continuous shooting functions, still images at maximum pixels (9M) can be shot continuously at high speed (about 5 frames/sec.). Whether the subject is running children and pets or sports action, you won't miss the decisive moment.

* Continuous shooting speed will vary depending on shooting conditions, card type, card condition, etc.



The simple solution to overexposure/underexposure. Dynamic range double shot

Overexposure and underexposure are suppressed by shooting, consecutively at high speed, two still images with different exposures, and then recording an image that combines the properly exposed portions of each. This is effective for high-contrast scenes. Besides the existing four dynamic range expansion effect settings ("Very Weak" to "Strong"), there is also a new AUTO setting that lets the camera decide the optimum exposure difference. So now it is even easier to enjoy dynamic range expansion up to a maximum equivalent to 12 EV.



Normal Shoot



Dynamic range double shot mode

Breathtaking imaging power, ready response. Smooth Imaging Engine IV + CMOS sensor

The CX2 combines advanced image processing engine Smooth Imaging Engine IV with a CMOS sensor capable of high-speed image processing. Each push of the shutter release brings a deeply satisfying shooting feel and great image quality. The CX2's high-definition, low-noise images will vividly portray your excitement.

Suppress whiteout to recreate the beauty the eye sees. Pixel output interpolation algorithm

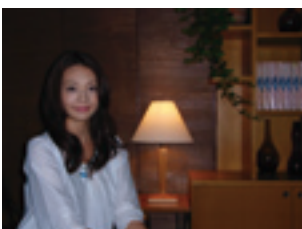
Resident on a customized circuit of the image processing engine, the pixel output interpolation algorithm makes it possible to faithfully capture the excitement you see with your eyes. By using interpolation techniques on the output of overexposed areas, the CX2 is able to suppress whiteout in high-contrast situations.

Natural colors for both people and scenery. Multi-pattern auto white balance

It can be difficult to define a white balance for scenes mixing different light sources, such as when shooting indoors with flash or when shooting scenes with both sunlight and shadow. Multi-pattern auto white balance sets the white balance to fit the light source of each segregated area, thereby surpassing the past method (an average setting for the entire image) to reproduce color tones closer to those seen by the eye.

Beautiful images are easy even for first-time users. Easy shooting mode

With easy shooting mode, you can take beautiful pictures with few mistakes by letting the camera handle the settings. When the mode dial is turned to EASY, you can relax and enjoy shooting while the camera automatically matches the settings to the situation (detecting faces, switching to macro mode, etc.).



WB: AUTO



WB: Multi-pattern AUTO



Macro



Face Recognition

Close-ups 1 cm from subject. Macro shooting functions

The CX2 gets as close as 1 cm for wide-angle* and 28 cm for telephoto* so you can enjoy shooting powerful images that are only possible with macro.

* 31mm equivalent for wide-angle and 300mm equivalent for telephoto.

Shoot seven images with different focal distances. Multi-target AF

Multi-target AF is effective for scenes (flower photography, etc.) where there are multiple possible focal distances. Based on the subject data, the CX2 automatically decides seven focus points and does the high-speed consecutive shooting of seven images while shifting the focus to each point. After shooting, you can select the image with the preferred focus.

* The continuously shot still images are recorded together as a single MP file. With MP file images recorded by the digital camera, a selected frame can be extracted and saved as an individual JPEG image within the camera.

Support for shooting creativity. AE/AF target shift functions

The AE (exposure) and AF (focus) targets can be shifted alone or together to any position on the screen. This enables you to take the desired shot by changing focus and exposure settings without moving the camera, even if it is fixed to a tripod.



* Simulated image

Catch the decisive moment. Extensive continuous shooting functions

Don't miss your target.M-continuous plus (9M/2M)

Record images shot continuously up until you remove your finger from the shutter release button. Choose from two images sizes: 9M (15 images shot in about 3 sec.) or 2M (30 images shot in about 1 sec.)

* M-Continuous Plus (9M) image size is fixed at N3456 (9M). * M-Continuous Plus (2M) image size is fixed at N1728 (2M). * The consecutively shot images are recorded as a single MP file (a file format with multiple still images in a single file). With MP file images recorded by the CX2, a selected frame can be extracted and saved as an individual JPEG image within the camera.

120 frame/sec. ultra-high-speed continuous shooting

With ultra-high-speed continuous shooting, the CX2 shoots 120 images during an approximate interval of either one or two seconds after the shutter release button is pushed.

* Image size is fixed at N640 (VGA). * The consecutively shot images are recorded as a single MP file (a file format with multiple still images in a single file). With MP file images recorded by the CX2, a selected frame can be extracted and saved as an individual JPEG image within the camera.

Pre-AF/Continuous AF

With Pre-AF, the camera detects the optimum focus position by shifting the focus to follow subject movement even when the shutter release button is not half-pressed. With Continuous AF, if subject movement is detected while the shutter release button is half-pressed, the camera automatically adjusts the focus to match subject movement. Now you won't miss the target moment.

Express yourself in a slightly different flavor. Aspect ratio 1:1 square format photography mode

Try this mode for a square format like that used by medium format cameras. It is also convenient for blog photographs.

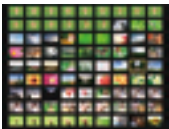


Large, high-definition 3.0-inch 920,000 dot VGA LCD monitor

The large, high-resolution LCD monitor has a wide viewing angle and high contrast. With sRGB comparison of 100% for color reproduction range, it vividly reproduces image colors. Three types of coatings prevent soiling and scratches. Boasting excellent visibility even outdoors, this monitor provides a comfortable shooting environment.



* Simulated image



The 81-image display function



The histogram and detail information display function



Shooting information display frame

Responding to your creative urge: Twelve scene modes

Choose a mode to match the scene and let the camera handle the settings. The CX2 has added three scene modes: miniaturize, high-contrast B&W, and manner mode. Use all 12 to enjoy creating more memorable images.



High-contrast B&W

- | | |
|-------------------|------------------|
| Portrait | Landscape |
| Night portrait | Nightscape |
| manner | High sensitivity |
| Zoom macro | Sports |
| High contrast B&W | Text |
| Miniaturize | Skew correction |

Two blur reduction functions handle blur from both hand and subject motion

The image sensor shift blur reduction function reduces the hand-motion blurring that tends to occur in situations such as telephoto and macro shooting. For lowlight scenes (indoors, twilight, etc.), subject blurring can be reduced using auto high sensitivity, which enables faster shutter speeds by raising the maximum ISO sensitivity level.

Immediate call up the image you want. Image flag function

You can quickly display desired images. This is convenient when accessing images for reference; up to 20 files can be flagged.

Quick and accurate camera leveling. Electronic level

Using the level sound and the level indicator shown on the picture display, you can confirm that the image is level. This is convenient when shooting landscapes, buildings, and other subjects where tilting can be a problem.



* Simulated image

Other Major Features

Convenient shooting functions

- Extensive bracketing functions: Color bracketing, auto bracketing, white balance bracketing, and focus bracketing
- "My Settings" mode: Two groups of original settings can be registered.
- Flash light intensity adjustment: Adjust flash intensity to fit the situation
- Step zoom: Enables zoom focal length to be fixed at seven steps.
- "Today's Shot" display function: Displays the number of pictures taken that day

Convenient playback functions

- Level compensation: Correct brightness and contrast in the camera
- White balance compensation: Correct color tone of still images in the camera



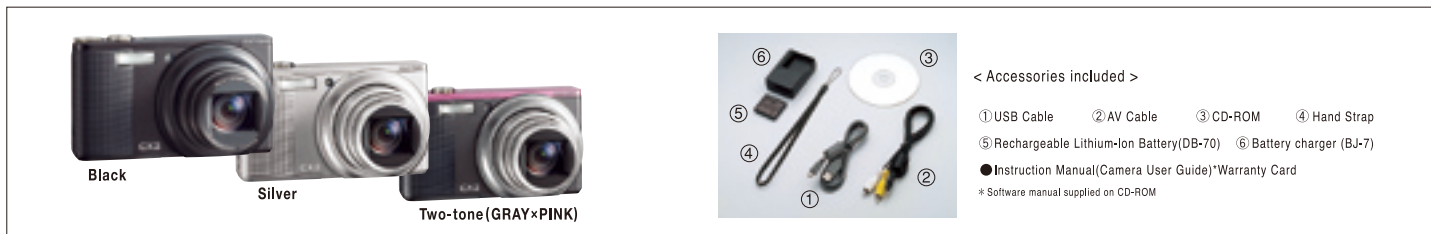
f= 28mm 1/470sec F3.5 ISO100 EV-0.3 WB:Manual



Creating photographs as art every day.

Art Diary

* Focal length indicated are 35mm film camera equivalents.



■ CX2 Major Specifications

Item	Specifications
No. of Effective Pixels (Camera)	Approximately 9,29 million pixels
Image Sensor	1/2.3-inch CMOS (total pixels: approx. 10,29 million pixels)
Lens	Focal length
	1=4.3-52.5 mm (equivalent to 28-300 mm for 35 mm film cameras. With Step Zoom set, option of eight fixed lengths: 28 mm, 35 mm, 50 mm, 85 mm, 105 mm, 135 mm, 200 mm, and 300 mm)
	F-aperture
	F3.5 (Wide) - F5.6 (Telephoto)
Shooting Distance	Normal shooting: Approx. 30 cm - infinity (Wide), approx. 1.5 m - infinity (Telephoto) (from the front of the lens)
	Macro: Approx. 1 cm - infinity (Wide), approx. 28 cm - infinity (Telephoto), approx. 1 cm - infinity (Zoom Macro) (from the front of the lens)
Lens Construction	10 elements in 7 groups (aspheric lens: 4 elements and 5 surfaces)
	Optical: 10.7x zoom (equivalent to 28-300 mm focal length for 35 mm cameras) Digital: 4.8x up to 51.4x (equivalent to 1440 mm) when used with optical zoom Auto Resize: 5.4x*1 up to 57.8x*1 (equivalent to 1620 mm) when used with optical zoom
Focus Mode	Multi AF (contrast AF method) / Spot AF (contrast AF method) / Continuous AF / Multi-Target AF / Manual Focus / Fixed Focus (Snap) / Infinity (AF auxiliary light)
Image stabilizer	Image sensor shift method image stabilizer
	Shutter Speed *2
Continuous Shooting	Still image
	Movie
Exposure Control	Continuous shooting speed*3
	Continuous shooting capacity
Exposure compensation	Exposure metering Mode
	Exposure mode
ISO sensitivity (Standard Output Sensitivity)	Manual Exposure Compensation +2.0EV (1/3EV Steps), Auto Bracket Function +0.5EV, ±0, +0.5EV
	Exposure compensation
White Balance Mode	AUTO / AUTO+HL / ISO60 / ISO100 / ISO200 / ISO400 / ISO800 / ISO1600
Flash	AUTO / Multi-Pattern AUTO / Outdoors / Cloudy / Incandescent / Incandescent 2 / Fluorescent / Manual, White Balance Bracket Function
	Built-in flash mode
	Built-in flash range
Monitor	Flash compensation
	3.0-inch Transparent LCD (approx. 920,000 dots)
Shooting Mode	Auto Shooting Mode / Easy Shooting Mode / Dynamic Range Double Shot Mode / Continuous Shooting Modes (Continuous, M-Continuous Plus, Ultra-High-Speed Continuous) / Scene Modes (Portrait / Sports / Night Portrait / Landscape / Nightscape / High Sensitivity / Manner / Zoom Macro / High-Contrast B&W / Miniaturize / Skew Correction / Text) / My Settings Mode / Movie Mode
	Picture Quality Mode*4
No. of Pixels Recorded	Still image/movie-picture
	Movie
	Text
Recording Media	SD memory card (32, 64, 128, 256, 512 MB, 1GB, 2GB)
	SDHC memory card (4GB, 8GB, 16GB, 32GB), Internal memory (approx. 88MB)
Storage Capacity (Pictures/Time)*5 (Internal memory 88MB)	Still image/movie-picture
	Movie*6
Recording File Format	Still Image
	Multi-picture
	Movie
	Compression method
Other Major Shooting Functions	Continuous, Self-Timer (operation time: approx. 10 sec. / approx. 2 sec. / custom self-timer), Interval Timer (Shooting interval: 5 sec. - 1 hour (5 sec. steps) *8, Color Bracket function, Focus Bracket function, AE/AF Target Shift, Histogram, DNG Profile, Grid Guide, Electronic Level
	Thumbnail view, Enlarged view (maximum 16x), Resize, Level Compensation, White Balance Compensation, Trim, Flag, Slideshow, POF Setting
Interface	USB 2.0 (High-Speed USB) Mini-B, Mass storage compatible*9 / AV Out 1.0Vp-p (75Ω)
	Video Signal Format
Power Supply	Rechargeable Battery: DB-70 x1, AC adapter (AC-4g option)
Battery Consumption*10	Based on CIPA Standard: Using the DB-70, approx. 290 pictures (when LCD Dim is on)*11
External Dimensions	101.5 mm (W) x 58.3 mm (H) x 28.4 mm (D) (excluding projecting parts)
Weight	Approx. 185 g (excluding battery, SD memory card, strap), Accessories approx. 23 g (battery, strap)
Operating Temperature Range	0°C - 40°C

- *1. VGA image size
*2. Shutter speed upper and lower limits vary depending on Shooting Mode and Flash Mode.
*3. Values measured under Ricoh measurement conditions using a Panasonic PRO HIGH SPEED 8GB SDHC memory card. The continuous shooting speed and number of pictures will vary depending on the shooting conditions, the type of recording media used, the condition of the recording media, etc.
*4. The picture quality modes which can be set vary depending on the image size.
*5. Estimated number of still images it is possible to record and estimated amount of movie recording time.
*6. The maximum length for one instance of movie recording is 90 minutes or the file size under limit of 4GB.
*7. Compatible with DCF and DPOF. DCF is the abbreviation of the JEITA standard "Design rule for Camera File system." (Full compatibility with other devices is not guaranteed.)
*8. With flash off.
*9. Mass storage driver is compatible with Windows 2000, Windows XP, Windows Vista, Mac OS9.0-9.2.2, and Mac OSX10.1.2-10.5.7.
*10. Shooting capacity was measured using CIPA-standard parameters. This is only an estimate, and performance may vary according to usage conditions.
*11. When LCD Auto Dim is off: approx. 270 pictures



- CX2 is a trademark of Ricoh Co., Ltd. • Microsoft, Windows and Direct X are registered trademarks or trademarks of Microsoft Corporation in the U.S. and/or other countries.
• Macintosh, Mac OS are registered trademarks of Apple Computer, Inc. in the U.S. and/or other countries. • Compatible with SEIKO EPSON CORPORATION PRINT Image Matching III. • The SDHC logo is a trademark. • The SD logo is a trademark.
• Adobe and DNG logo are trademarks or registered trademarks of Adobe systems incorporated in the U.S. and/or other countries. • All other trademarks mentioned herein are the property of their respective owners.

RICOH

RICOH COMPANY, LTD.
3-2-3, Shin-yokohama
Kohoku-ku, Yokohama-shi 222-8530, Japan
Phone: 045-477-1738 Fax: 045-477-1797 http://www.ricoh.com/r_dc

RICOH INTERNATIONAL B.V.
Oberrather Straße 6, D-40472
Düsseldorf, Germany
Phone: 0211-6546-0 Fax: 0211-6546-308 <http://www.ricohpmmc.com>

RICOH UK LTD. (PMCC UK)
Ricoch House, 1 Plane Tree Crescent, Feltham,
Middlesex, TW13 7HG, England
Phone: 0208-261-4000 Fax: 0208-261-4288

RICOH FRANCE S.A.S. (PMCC FRANCE)
383, Avenue du Général de Gaulle – BP 307-931-13
Clamart Cédex, France
Phone: 01-4094-3267 Fax: 01-4094-3276

RICOH ESPANA, S.A. (PMCC SPAIN)
Av. Litoral Mar, 12-14, 08005
Barcelona, Spain
Phone: 093-295-7600 Fax: 093-295-7605

RICOH ITALIA S.p.A. (PMCC ITALY)
via Ponchielli, 3
20063 Cernusco S/N Milano, Italy
Phone: +39-02-92361217 Fax: +39-02-92361244

< Accessories included >

- ① USB Cable ② AV Cable ③ CD-ROM ④ Hand Strap
⑤ Rechargeable Lithium-Ion Battery (DB-70) ⑥ Battery charger (BJ-7)
● Instruction Manual (Camera User Guide)* Warranty Card
* Software manual supplied on CD-ROM

■ CX2 Optional Accessories

Product Name	Model Name
Rechargeable battery	DB-70
Battery charger	BJ-7
Soft case (black)	SC-90BK
Soft case (brown)	SC-90BN
Neck strap	ST-2
Cable switch	CA-1
AC adapter	AC-4g

■ CX2 Software

	Windows Vista	Windows XP	Windows 2000
1.DL-10	○	○	○
2.Irudio Photo & Video Studio	○	○	○
3.Adobe Reader	○	○	○

*To playback MP files and output still images from MP files on a Macintosh PC, please use the enclosed VM-1 Macintosh software for viewing MP files (compatible OS: Mac OS X 10.4-10.5.7).

■ CX2 System Requirements

	Windows
Operating system	Windows 2000 Professional Service Pack4 Windows XP Home Edition Service Pack 3/ Professional Service Pack 3 Windows Vista Service Pack 2
CPU	Windows 2000/ Windows XP : Pentium®III 500MHz or more, Windows Vista : Pentium®III 1GHz or more
Memory	Windows 2000 / Windows XP : 256MB or more, Windows Vista : 512MB or more
Available disk space on hard drive at installation time	160MB or more
Display Resolution	1024x768 dots or greater
Display Colors	65,000 colors or greater
CD-ROM Drive	A CD-ROM drive compatible with the above-mentioned computer
USB Port	A USB port compatible with the above-mentioned computer

*When the CX2 is connected to a PC, only a USB connection can be used. Serial connection is not supported. *It is necessary for the above OS to be preinstalled and for the USB port to be standard equipment. *The 64-bit OS version is not supported. *The CX2 is compatible with MAC OS 9.0 to 9.2.2 and Mac OS X 10.1.2 to 10.5.7 by mass storage connection.

■ SD Memory Card Storage Capacity (Number of Images and Time)

Mode	Quality	No. of Pixels Recorded	Internal Memory (88MB)	1GB	2GB	4GB	8GB	16GB	32GB
Still	F	3456 (8M)	24 images	266 images	530 images	1056 images	2163 images	4335 images	8695 images
	N	3456 (8M)	42 images	457 images	931 images	1826 images	3737 images	7487 images	15020 images
	F	3 : 2 (8M)	27 images	299 images	608 images	1195 images	2442 images	4893 images	9815 images
	F	1 : 1 (8M)	33 images	353 images	714 images	1403 images	2868 images	5746 images	11527 images
	N	3072 (7M)	53 images	570 images	1159 images	2277 images	4654 images	9324 images	18704 images
	N	2592 (5M)	72 images	775 images	1576 images	3094 images	6325 images	12671 images	25418 images
	N	2048 (3M)	109 images	1184 images	2363 images	4640 images	9486 images	19005 images	38125 images
	N	1280 (1M)	175 images	1888 images	3840 images	7541 images	15415 images	30882 images	61951 images
	N	640 (VGA)	705 images	7553 images	15359 images	30159 images	61643 images	123489 images	247716 images
	N	640 (VGA)	312 images	3357 images	6827 images	13407 images	27404 images	54988 images	110125 images
Still (When [Focus] is set to [Multi-target AF])	F	3456 (8M)	23 images	255 images	516 images	1014 images	2073 images	4152 images	8330 images
	N	3456 (8M)	39 images	425 images	865 images	1699 images	3474 images	6960 images	13962 images
	F	3 : 2 (8M)	26 images	285 images	579 images	1138 images	2327 images	4662 images	9392 images
	F	1 : 1 (8M)	31 images	333 images	675 images	1326 images	2710 images	5430 images	11893 images
	N	3072 (7M)	48 images	521 images	1059 images	2080 images	4253 images	8520 images	17091 images
	N	2592 (5M)	64 images	686 images	1397 images	2743 images	5606 images	11231 images	22529 images
	N	2048 (3M)	90 images	974 images	1981 images	3892 images	7956 images	15940 images	31976 images
	N	1280 (1M)	133 images	1438 images	2926 images	5746 images	11745 images	23530 images	47202 images
	N	640 (VGA)	109 images	1184 images	2363 images	4640 images	9486 images	19005 images	38125 images
	N	640 (VGA)	312 images	3357 images	6827 images	13407 images	27404 images	54988 images	110125 images
Text	F	3456x2592	42 images	457 images	931 images	1826 images	3737 images	7487 images	15020 images
	N	2048x1536	109 images	1184 images	2363 images	4640 images	9486 images	19005 images	38125 images
Movie	640x480 (15frames / sec.)	1'42"	18'20"	37'17"	76'41"	149'40"	299'50"	601'28"	
	640x480 (30frames / sec.)	51"	9'15"	18'49"	38'41"	75'31"	151'18"	303'31"	
	320x240 (15frames / sec.)	4'19"	46'19"	94'11"	193'41"	378'2"	757'18"	1519'7"	
	320x240 (30frames / sec.)	2'12"	23'42"	48'13"	99'8"	193'30"	387'39"	777'37"	
M-Cont Plus	N	3456 (9M)	42	457	931	1828	3737	7487	15020
	N	1728 (2M)	143 images	1548 images	3072 images	6033 images	12332 images	24706 images	49561 images
Speed Cont	N	640 (VGA)	705 images	7553 images	15359 images	30159 images	61643 images	123489 images	247716 images

*The maximum recording time is the estimated total recording time. The maximum recording time per shooting is 90 minutes or the equivalent of 4 GB. *The maximum number of consecutive shots that can be taken using continuous mode is 999. When the number of remaining shots is 1000 or more, "999" is displayed on the picture display. *The figures shown for the maximum number of shots that can be recorded for M-Cont (2M), M-Cont (9M), and Speed Cont are the estimated total number of shots that can be recorded. The number of shots that can be recorded at one time is 30 for M-Cont Plus (2M), 15 for M-Cont Plus (9M), and 120 for Speed Cont. *The maximum number of shots for Multi-Target AF is the estimated total number of shots that can be recorded. The number of shots that can be recorded at one time is 7. When the number of remaining shots is 9999 or more, "9999" is displayed on the picture display. *The number of remaining shots displayed on the picture display may differ from the actual number of shots, depending on the subject. *Movie recording time and the maximum number of still pictures may vary depending on the capacity of the recording destination (internal memory or SD memory card), shooting conditions, and the type and manufacturer of the SD memory card. *A high speed memory card is recommended when shooting for long periods.

For more information, visit:

http://www.ricoh.com/r_dc