

**PENTAX**



# **645 NII**

**OPERATING MANUAL**

To ensure the best performance from your camera,  
please read the Operating Manual before using the camera.

## Welcome to the Fantastic World of Pentax Autofocus Multi-Mode Medium Format Photography

The Pentax **645NII**, our latest development in the area of the medium format SLR, promises a superior 6 x 4.5cm result with 120, 220, or 70mm film.

Made possible through our vast experience and technology accumulated over the years, the new autofocus multi-mode **645NII** assures pin-sharp focus accuracy with AF Spot and AF Wide selection, and the 6-segment multi-pattern metering allows precise exposure control under widely varying conditions. Unsurpassed versatility is assured through the utilizing of a full range of exposure modes (Programmed AE, Aperture-Priority AE and Shutter-Priority AE, Metered Manual and TTL auto flash control), an exposure compensation control and auto-bracketing mode and a new user-set Pentax Function to customize the **645NII** to meet the for user's shooting preferences.

With a 645 A- or FA lens attached, the **645NII** imprints relevant information (frame number, shutter speed, aperture setting, exposure control and auto-bracketing mode.)

The Pentax **645NII** is a professional camera possessing a number of highly sophisticated features: built-in automated film wind, an external LCD information panel and clearly visible LCD information in the viewfinder.

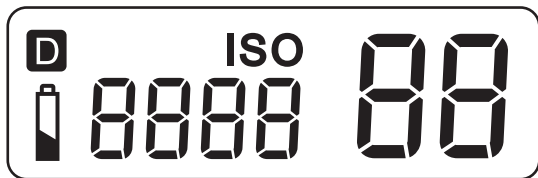
Lenses and accessories produced by other manufacturers are not made to our precise specifications and therefore may cause difficulties with or actual damage to your Pentax camera. We do not assume any responsibility or liability for difficulties resulting from the use of lenses and accessories made by other manufacturers.

PENTAX is a trademark of HOYA Corporation.

# TABLE OF CONTENTS

LCD Panel Indication .....	3	Setting the Film Speed (ISO).....	24
Viewfinder Indication .....	3	Unloading Film.....	25
Names of Working Parts .....	4	Unloading the Film in Mid-Roll.....	26
FOR SAFE USE OF YOUR CAMERA.....	6	Installing the Eyecup .....	27
Precautions for Your Camera.....	7	Adjusting the Viewfinder Diopter .....	28
Precautions for Battery Usage .....	9		
<b>I. BASIC OPERATION (PREPARATION) .....</b>	<b>10</b>	<b>II. BASIC OPERATION (SHOOTING).....</b>	<b>29</b>
Attaching the Camera Strap.....	11	Using the Programmed AE Mode .....	30
Loading the Batteries .....	12	Using the Multi(6)-Segment Metering Mode .....	31
Turning the Power ON .....	14	Using Autofocus Mode .....	32
• *Low Battery Warning .....	15	Using the Single AF Mode.....	33
Attaching the Lens .....	16	Using the 3-Point AF Mode .....	34
Detaching/Attaching Film Holder 645.....	18	Using the Single-Frame Drive Mode .....	34
Pressing the Shutter Release Button .....	20	Holding the Camera.....	35
Loading Film.....	20	Taking a Picture.....	36

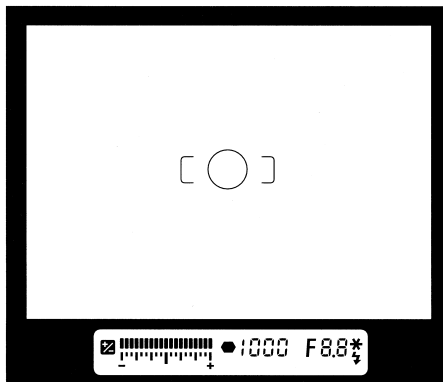
<b>III. ADVANCED OPERATIONS .....</b>	<b>38</b>	Using the Spot AF Mode .....	59
Selecting a Drive Mode .....	38	Focus Lock Function .....	60
• Consecutive-Frame Mode .....	38	Manual Focusing .....	61
• Self-Timer Mode .....	39	Imprinting the Exposure Data on the Negative ...	64
Multiplex Exposure Mode .....	40	Using a Pentax Dedicated External Flash .....	68
Selecting an Exposure Mode .....	42	Daylight- Sync Shooting .....	72
• Using the Programmed AE Mode .....	42	Slow-Speed-Sync Shooting .....	73
• Using the Aperture-Priority AE Mode .....	44	Using the Preview Lever .....	74
• Using the Shutter-Priority AE Mode .....	46	Mirror Lock-up .....	75
• Using the Metered Manual Mode .....	48	Pentax Functions .....	76
• Using the Bulb Exposure Mode .....	50	Setting Pentax Function .....	78
About Exposure Compensation .....	52	Accessories (Optional) .....	83
Auto Bracketing Exposure Mode .....	53	• Interchangeable screen .....	84
Switching the Metering Mode .....	55	<b>IV. OTHERS .....</b>	<b>86</b>
• Using the Center-Weighted Metering Mode ...	55	Troubleshooting .....	86
• Using the Spot Metering Mode .....	56	Specifications .....	88
Using AE Lock .....	57	Warranty Policy .....	90
Setting the Focus Mode Switch to the Continuous Position .....	58	Statement of FCC Compliance .....	93



- 88 : Frame Counter (p.22)
- 8888 : Film Speed Information (p.24)
- ISO : Film Status Information (p.24)
- 🔋 : Battery Exhaustion Warning (p.15)
- D : Imprinting Exposure Data Information (p.64)

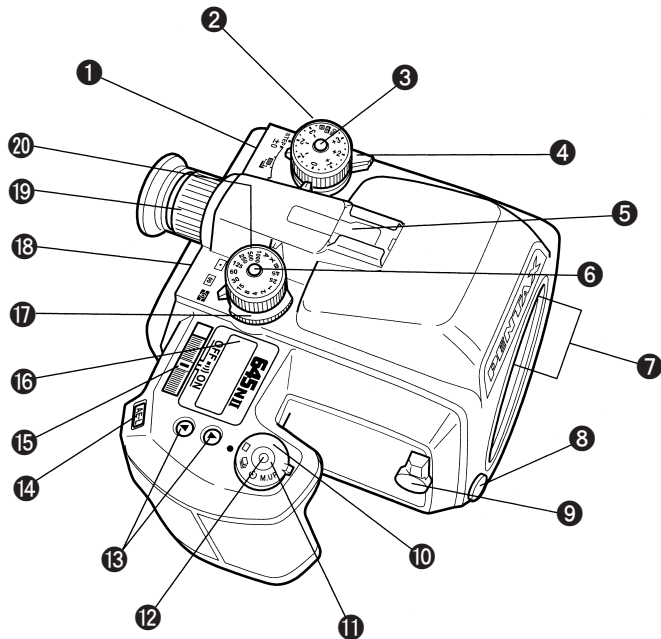
## LCD (Liquid-Crystal Display)

When the LCD is exposed to high temperatures over approximately 60°C it may blacken, but when the temperature normalizes, it should return to normal.



- [ ] : 3-point AF Frame (p.34)
- : Spot Metering / Focusing Area (p.56, 59)
- 1000 : Shutter Speed (p.42, 45, 47, 49)
- F8.8 : Aperture Value (p.42, 45, 47, 49)
- ⚡ : Flash Status Information (p.68)
- ◆ : In-Focus Indicator (p.36)
- ◻ : Exposure Compensation (p.52)
- ▒ : Bar Graph (p.49, 52)
- \* : AE Lock (p.57)

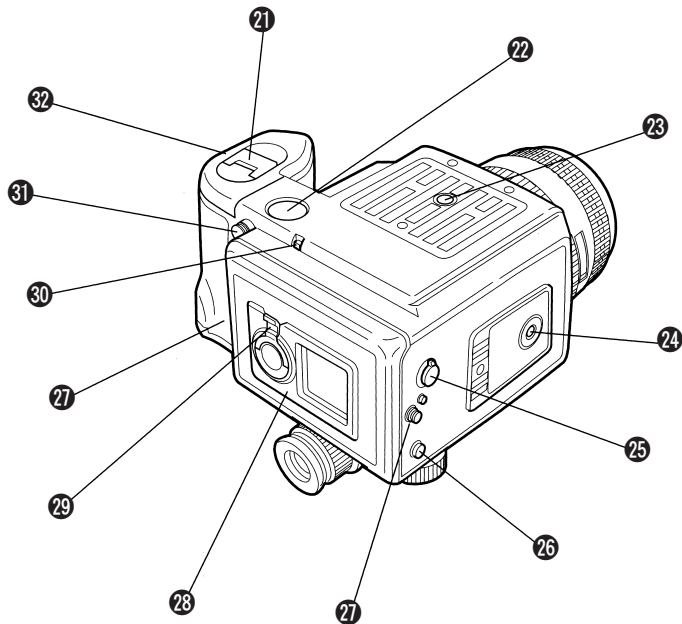
# Names of Working Parts



- ❶ AF mode selector (p.33, 58)
- ❷ Exposure compensation dial (p.52)
- ❸ Exposure compensation dial release button (p.52)
- ❹ Auto bracketing selector (p.53)
- ❺ Hot shoe (p.68)
- ❻ Shutter speed dial release button
- ❼ Lens information contacts
- ❽ Lens unlock button (p.16)
- ❾ Preview lever (p.74)
- ❿ Drive mode selector (p.34, 38, 39)
- ⓫ Shutter release button (p.20)
- ⓬ Shutter release socket (p.51)
- ⓭ Up / down buttons
- ⓮ AE lock button (p.57)
- ⓯ Main Switch (p.14)
- ⓰ LCD panel (p.3)
- ⓱ Metering mode selector (p.31, 55, 56)
- ⓲ AF frame selector (p.34.59)
- ⓳ Diopter adjustment ring (p.28)
- ⓴ Shutter speed dial


# Names of Working Parts


- 21 Battery holder release knob
- 22 External power supply socket (p.13)
- 23 Tripod socket (p.35)
- 24 Vertical tripod socket (p.35)
- 25 Multi-exposure switch (p.40)
- 26 X-sync socket
- 27 Strap lug (p.11)
- 28 Film holder (p.18)
- 29 Film holder release knob (p.18)
- 30 Mid-roll wind-up button (p.26)
- 31 Electronic cable release socket (p.51)
- 32 Battery holder (p.12)



# FOR SAFE USE OF YOUR CAMERA

Although we have carefully designed this camera for safe operation, please be sure to follow precautions given on this page.

 **WARNING** This mark indicates precautions that, if not followed, could result in serious injuries to the operator.

 **CAUTION** This mark indicates precautions that, if not followed, could result in minor or medium injuries to the operator or damage to the equipment.

 **WARNING**

- Wrapping the strap around your neck is dangerous. Make sure that small children do not get the strap caught around their neck.
- Do not look directly at the sun through the camera, as viewing the sun for an extended period may damage your eyes.

 **CAUTION**

- Never try to disassemble, short or recharge the battery. Also, do not dispose of the battery in fire, as it may explode.
- Remove the batteries from the camera immediately if they become hot or begin to smoke. Be careful not to burn yourself during removal.



**Your Pentax camera is a high-precision mechanism. Handle it with great care.**

## **Precautions when taking pictures**

- Do not use the camera where it may come in contact with rain, water, or any other liquid, because the camera is not weather, water, or liquid resistant. Should the camera get wet from rain, splashing water, or any other liquid wipe it off immediately with a dry soft cloth.
- Do not drop the camera or allow it to hit solid objects. If the camera suffers a shock or impact, take it to a Pentax service center for inspection.
- Be careful not to subject the camera to strong vibrations, shock or pressure. Use a cushion to protect the camera when carrying it in a motorcycle, car, boat, etc.
- Condensation on the interior or exterior of the camera may be extremely harmful to the camera mechanism as it may cause rust. Furthermore, if the camera is taken from warm temperature to a subfreezing one or vice versa, the formation of ice crystals may cause damage. In such a case, put the camera into a case or plastic bag so that temperature difference is minimized. Do not remove it from the bag until temperature has stabilized.

- Regular size color prints may cut off what appears on the extreme edges of the film frame. Compose your picture with a margin of safety at the edges.

## **Precautions for storage**

- Avoid leaving the camera for extended periods in places where the humidity and temperature are very high, such as in a car.
- Do not store the camera in a closet with mothballs or in an areas where chemicals are handled. Store it in a place with good dry air circulation to prevent the growth of fungus.

## **Precautions for proper care**

- Never touch the shutter curtain or mirror with your finger or any other object.
- Use a blower and lens brush to remove dust accumulated on the lens or viewfinder.
- Never use solvents such as paint thinner, alcohol or benzene to clean the camera.
- Electrical problems may often be caused by water, dirt or dust at points of electrical contact. Also check for battery leakage, traces of dirt or grease, or corrosion due to salinity or gas. If you cannot correct the problems, have your camera inspected at a Pentax service center. Repairs of this nature are not covered under the terms of the warranty and charges may be assessed.

**Other precautions**

- The temperature range at which this camera functions properly is 50°C to -10°C (122°F to 14°F).
- A camera which has been submerged in water usually cannot be repaired. If such an accident should occur, it is advisable to contact a Pentax Service Center immediately.
- To maintain optimum performance, it is recommended that the camera be inspected every one or two years. If the camera has not been used for an extended period, or is being prepared for an important photographic session, it is recommended that you have the camera inspected or test shoot with it.

- Repairs deemed necessary due to usage of this product in an industrial or commercial application may not be covered under the terms of the Pentax warranty.
- The PENTAX warranty provides only for the repair of defects in materials or workmanship. Damage of any kind cannot be repaired at no charge under the terms of the warranty. If the difficulty is caused as a direct result of the product being used in conditions as outlined in this manual, charges will be assessed and a repair quotation will be provided.

- Use six 1.5V AA size alkaline, or lithium batteries.
- Misuse of the battery can cause hazards such as leakage, overheating, explosion, etc. The battery should be inserted with the "+" and "-" sides facing correctly.
- Battery performance may be temporarily hindered in low temperatures, but will recover in normal temperatures.
- Keep a spare battery on hand for replacement convenience when shooting outdoors or while traveling.
- Replace the batteries at the same time. Do not mix battery brands, types or old batteries with new ones. As this may cause explosion or overheating.