

RICOH

# G800SE

## Firmware Update Instruction Manual

This manual describes the procedures for downloading the G800SE firmware from the Ricoh website and updating the firmware.

Perform the following operations to update the firmware.

### Flow of procedures

1. Check the current version of the firmware (p. 1)

2. Download the firmware file, and get it ready for use (p. 3)

3. Copy the firmware to an SD memory card (p. 3)

4. Update the firmware (p. 7)

5. Check the firmware version of the camera (p. 9)

### Making preparations


#### Things that are needed

- Camera body
- Charged batteries (inserted into the camera body)
- SD memory card (with approx. 10MB of space available or that has been formatted\*1 using the camera / not compatible with SDXC memory cards with capacities exceeding 256GB)
- Computer
- Accompanying USB cable or a card reader/writer

#### \*1 Formatting the SD memory card

#### Caution

If a card storing images is formatted, all data on the card will be lost. Save needed images to a computer in advance before formatting the card.

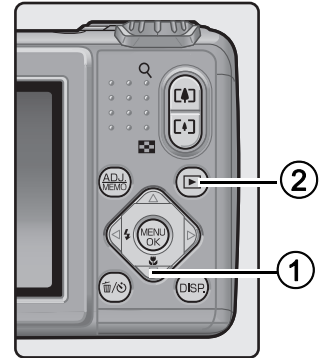
1. Insert the SD memory card into the camera, and turn on the power to the camera
2. Press the MENU/OK button
3. Display the Setup Menu
4. Select [Format [Card]] from the menu, and press the ► button
5. Select [Yes], and press the /☺ button

# 1. Check the version of the firmware

## Caution

Before updating, be sure to check the firmware version using the following method. If the installed firmware is the latest version, there is no need to upgrade.

1. With the camera turned off, while pressing the ▼ button (①), press and hold the ▶ (Playback) button (②) down for 2 to 3 seconds



## 2. Check the firmware version displayed on the picture monitor

- The part to check is the information that is encircled in the box below. When the current version of the firmware is v1.06, the version will be shown as [MAIN: v.1.06] as follows:

```
MAIN: v1.06
BKUP: ---
MONI: ---
ADJD: ---
EXTD: ---
SH: 000024
ST: 000000
NO_EXTMODULE

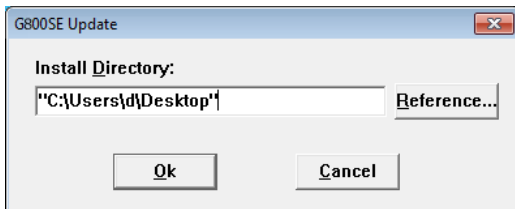
NO_EXBAR_MODULE
MAC: 00:26:73:15:70:11
BD : 00:26:73:16:26:7d
SER:00WN00010008
```

- There is no need to update the firmware if the version displayed and the firmware version given on the Ricoh website are the same.
- The firmware version will be displayed on the picture display for about 20 seconds, after which the picture display screen will switch to the playback mode screen.

## 3. Turn off the power to the camera

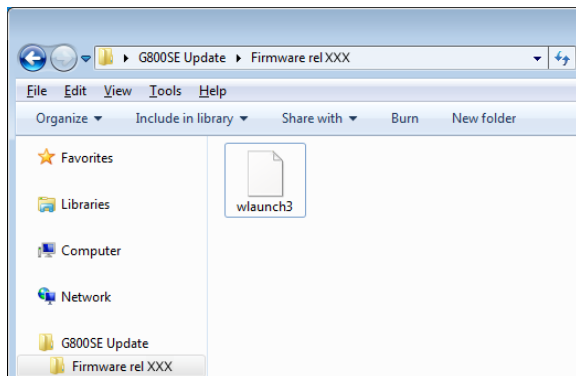
## 2. Download the firmware file, and get it ready for use

1. Download the firmware to your computer from the Ricoh website
2. Either doubleclick the downloaded file or click [OK] when the dialog box appears (refer to the below diagram)
  - For Windows, designate the destination for the extracted file, and click [OK].

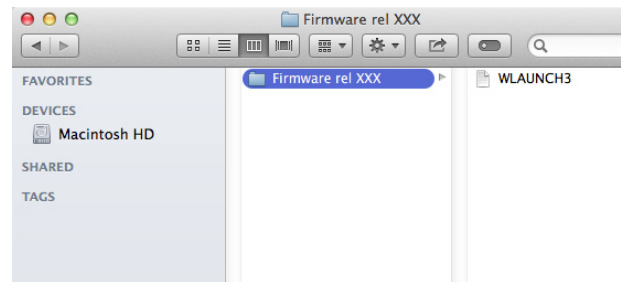


- For Macintosh, the extracted folder will appear on the desktop.
3. A G800SE Update folder will be created, and the firmware file, wlaunch3, will be extracted to the [Firmware relxxx (xxx is the version number)] folder

### When using Windows



### When using Macintosh



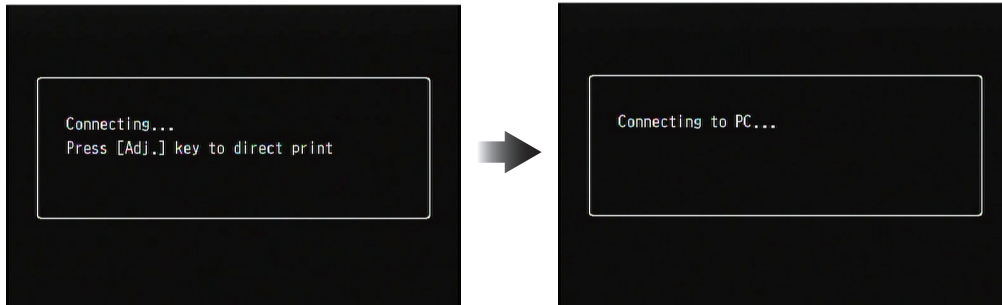
## 3. Copy the firmware to the SD memory card

You have two options below:

- ① Connecting the camera directly to a computer with a USB cable (refer to p. 4)
- ② Using a memory card reader/writer, or a built-in SD card slot in a computer (refer to p. 5)

## ① Method for copying firmware by connecting the camera and a computer together with a USB cable

1. Insert an SD memory card into the camera
2. Confirm the power to the camera is off, then connect the camera and the computer together using the supplied USB cable
  - The power to the camera will turn on automatically. If the power does not turn on automatically, press the POWER button on the camera to turn the power on.
  - Once the power is turned on, the picture display on the camera will display [Waiting to be connected...], and then, the display will show [Connecting to PC...] after a short while.



### Caution

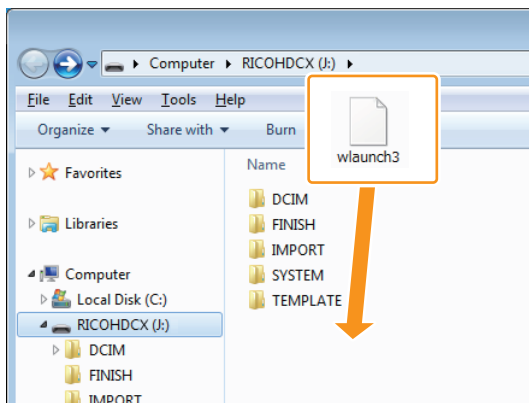
Do not press the MENU/OK button.

- When installing the DC Software in Windows, the DL-10 may start up automatically. If it does, close out the DL-10.
- If a [Removable Disk] dialog box displays in Windows Vista Service Pack 2, Windows 7 Service Pack 1 32bit version / 64bit version, Windows 8.1 32bit version / 64bit version, Windows Server 2008 R2 Service Pack 1, or Windows Server 2012 R2, please click [Cancel].
- If iPhoto starts up in Mac OS X, close out iPhoto.

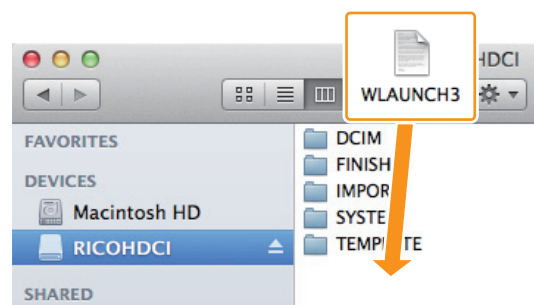
## 3. Copy the file, [wlaunch3] to the SD memory card

- Refer to the diagram below when copying files.
- The name of the drive for the camera may differ depending on the OS used. Ex.: [Removable disk], etc.
- If the SD memory card is formatted with the camera, [RICOHDCX] will display on the SD memory card.

### When using Windows



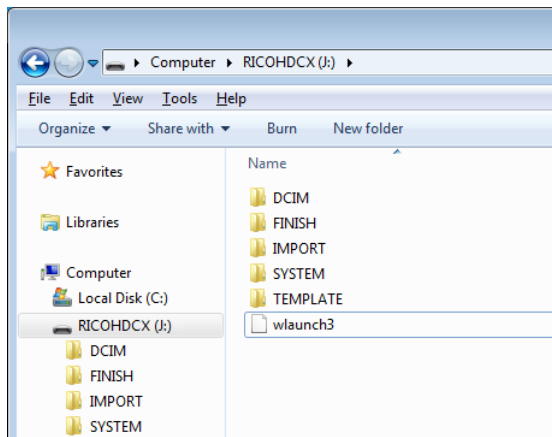
### When using Macintosh



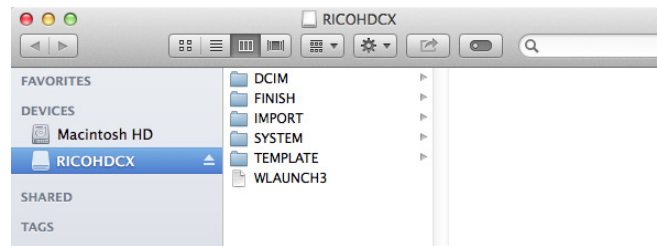
- Do not copy [wlaunch3] to [DCIM], [FINISH], [IMPORT], [SYSTEM], and [TEMPLATE] folder.

#### 4. Confirm that the files were correctly copied to the SD memory card

##### When using Windows



##### When using Macintosh



#### 5. When using Windows

After copying of the files is completed, doubleclick the [Safely remove hardware] icon on the taskbar, and proceed to Step 6

##### When using Macintosh

Drag and drop the [RICOHDCX] to the Trash

When the icon has been ejected, proceed to Step 9 below

#### Caution

If the procedures in Step 5 are not completed, the firmware may not copy correctly.

#### 6. Select [USB Mass-Storage Device], and click [Stop]

#### 7. Click the [OK] button

#### 8. Click the [Close] button

#### 9. Turn off the power to the camera, and disconnect the USB cable

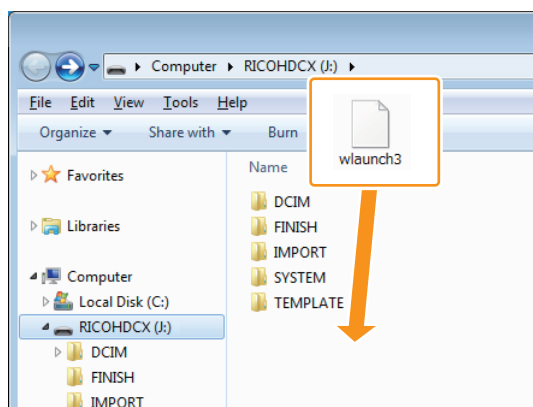
Proceed to [4. Update the firmware] on p. 7

### ② Method for copying firmware to an SD memory card using a card reader/writer or a computer with a built-in SD memory card slot

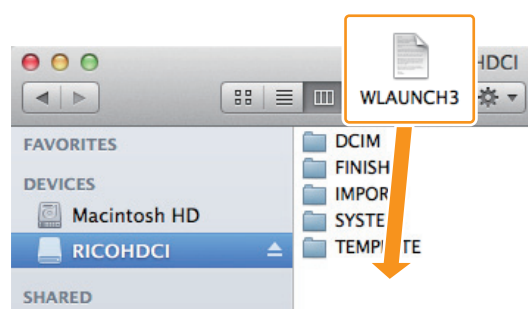
#### 1. Insert an SD memory card into a card reader/writer connected to a computer or into the card slot on a computer

## 2. Copy the file, [wlaunch3] to the SD memory card

### When using Windows



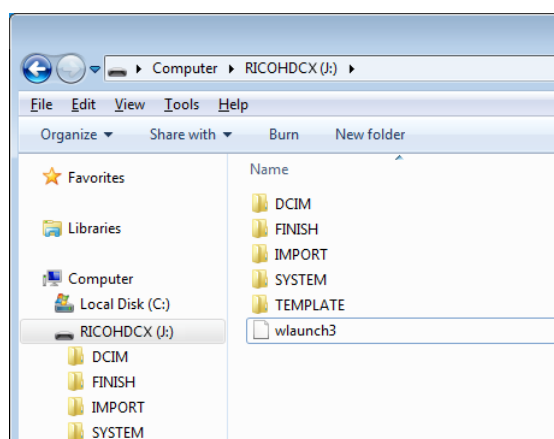
### When using Macintosh



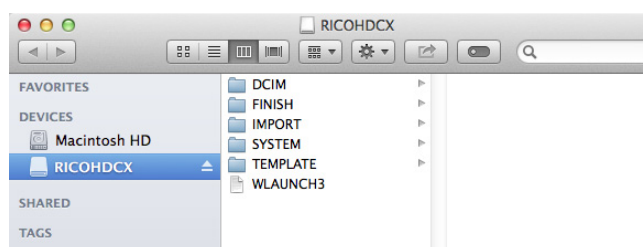
- Do not copy [wlaunch3] to [DCIM], [FINISH], [IMPORT], [SYSTEM], and [TEMPLATE] folder.

## 3. Open [RICOHDCX], and confirm that the files copied correctly

### When using Windows



### When using Macintosh



## 4. When using Windows

After copying of the files is completed, doubleclick the [Safely remove hardware] icon on the taskbar, and proceed to Step 5

### When using Macintosh

Drag the [RICOHDCX] icon over and drop it into to the [Garbage can] icon, and proceed to Step 8 once the icon has been deleted

### Caution

If the procedures in Step 4 are not completed, the firmware may not copy correctly.

## 5. Select [USB Mass-Storage Device], and click [Stop]

## 6. Click the [OK] button

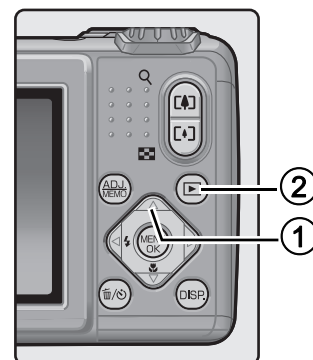
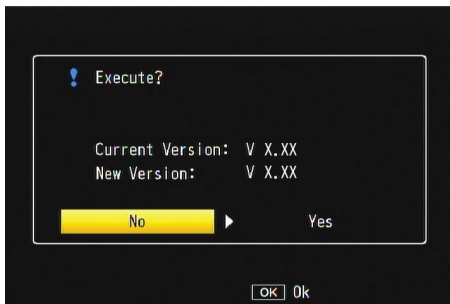
## 7. Click the [Close] button

## 8. Insert the SD memory card to which the firmware was copied into the camera

## 4. Update the firmware

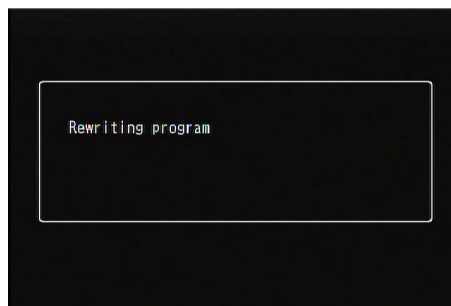
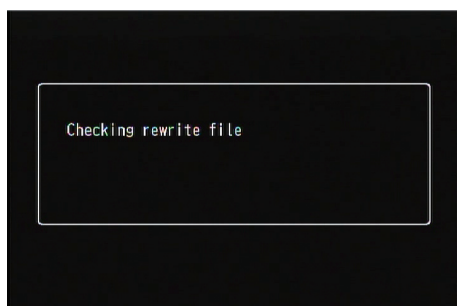
1. With the camera turned off, while pressing the ▲ button (①), press and hold the ► (Playback) button (②) down for 2 to 3 seconds

- A message confirming the firmware update will appear on the picture display.



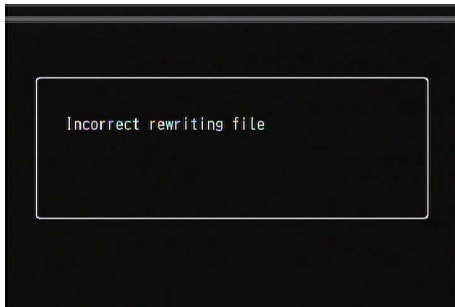
2. Press the ► button, select [YES], and press the MENU/OK button

- The firmware update will start, and the message shown below will display on the picture display. The firmware update should take about 30 seconds to complete.

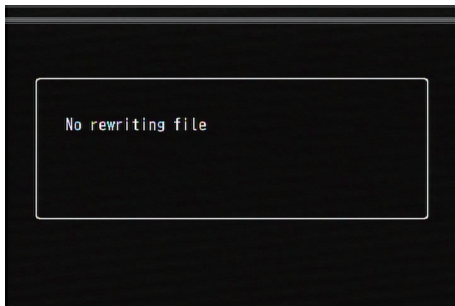


## Note

- If a message saying, [Incorrect rewriting file] appears on the picture display and the power to the camera turns off automatically, check the model of the camera, and use the correct firmware to update the firmware again.

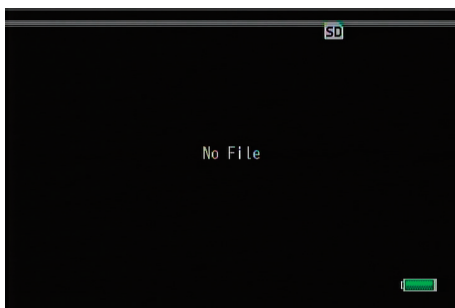


- If the message, [No rewriting file] is displayed, then the firmware was not copied to the SD memory card correctly. Confirm that the file was copied correctly. ( Refer to p. 3)



### 3. After updating the firmware is completed, the power to the camera will once turn off automatically, and then the power will turn on in playback mode

- If there are no image files that have been taken with the camera saved to the SD memory card, the [No File] message will display.



### 4. Turn off the power to the camera



---

## 5. Check the firmware version of the camera

---

Follow the procedures in [1. Check the firmware version] on page 2, and confirm that the version of the firmware has changed



### Note

- If the SD memory card continues to be used with the firmware files copied to it, the number of captured pictures that can be taken will decrease. Please delete the firmware on the SD memory card using a computer or format the SD memory card using the camera.
- Refer to p. 1 for the procedures for formatting the SD memory card. When the SD memory card is formatted, all files saved to it will be deleted.