

# Chapter 1

---

## GETTING STARTED

---

Before Using the Camera.....	20
Attaching the Wrist Strap.....	20
Powering the Camera.....	21
Charging the Battery .....	22
Loading the Battery.....	21
Using the AC Adapter.....	24
Storage Media.....	25
Inserting the SD Memory Card.....	26
Formatting an SD Memory Card .....	27

# Before Using the Camera

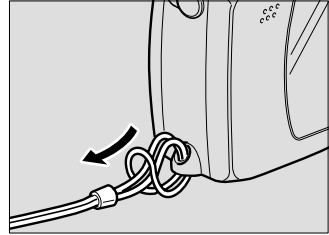
Important

- Do not swing the camera around by the strap.

## Attaching the Wrist Strap

Attach the wrist strap to the camera.

- 1** Pass the end of the strap through the wrist strap eyelet on the camera.



# Powering the Camera

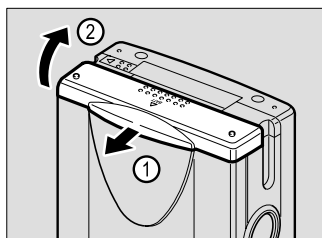
This section explains how to load and charge the battery and how to power the camera from a household electrical outlet

## Loading the Battery

Load the rechargeable battery (DB-40) in the camera before operating.

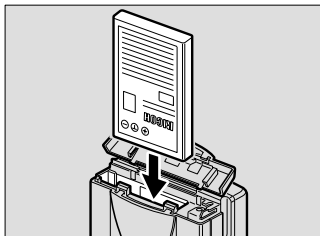
### 1 Check that the camera is turned off and slide the battery cover open.

▣ See “Turning the Camera On and Off” (p.30).



### 2 Load the battery and close the battery cover.

Make sure that the battery cover is closed securely.



### ● Shooting and playback guidelines

The table below shows the approximate recording and playback times as measured under the following conditions.

#### [Measuring conditions]

**Shooting** :Shooting continuously in a recording mode with the power turned on (at intervals of 30 seconds, without turning off the camera between shots, with the flash fired for 50% of the shots, at a temperature of 20°C)

**Playback** :The camera is left turned on in a playback mode at a temperature of 20C°

Important

- Be sure to charge the battery before using it for the first time. (The battery is not charged at the time it leaves the factory.) See “Charging the Battery” (p.22).

Important

- Keep metal objects, such as needles, away from the battery contact surfaces and electrical connections. Electrostatic damage could result.

(when fully charged)

Battery	Approx. recording time	Approx. playback time
Rechargeable battery DB-40	50 min.	80 min.


**Tips**

### How to Extend the Recording and Playback Times

Keep the following points in mind when operating the camera.

- The values indicated above tend to decrease depending on the temperature in which the camera is used. In a cold environment, warming the battery in your hands, for example, could increase the number of images you can record.
- Frequent use of the flash, zoom function and LCD monitor will contribute to running down of the battery. Keep their use to a minimum.

**Note**

- If you are using the camera for a long period and there is an electrical outlet nearby, use the AC adapter. See “Using the AC Adapter” (p.24).
- When powering the camera solely by the battery, you are recommended to keep a spare battery with you.
- If the battery symbol (  ) is displayed on the LCD monitor, it indicates that the battery is running low. Charge the battery. See “Charging the Battery” (p.22).

### ■ Precautions for Use

- When purchasing a spare battery, be sure to buy only the specified type.  
▣ See “Optional Accessories” (p.117).
- Wipe the contacts of the battery and camera with a soft dry cloth.
- When used continuously for a long period, the battery may become hot. Allow to cool before removing.
- If you do not intend to use the camera for a long period, discharge the battery completely before removing it, and store it in a cool place. Charge it fully before using it again.

## Charging the Battery

Before using the camera for the first time or when charging the battery, follow the procedure below to fully charge the battery.

### 1 Set the battery in the camera.

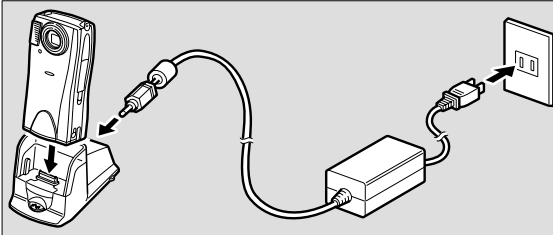
- ▣ See “Loading the Battery” (p.21).

### 2 Attach the connection cable of the AC adapter to the RICOH BASE.

### 3 Insert the power plug into the electrical outlet.

## 4 Place the camera on the RICOH BASE.

Charging will start. The charging lamp on the camera lights during charging and goes off when charging is finished. Charging takes approximately 3 hours at room temperature.



### Note

- You can use the high speed battery charger. (Charging time: Approx. 2 hours at room temperature.) See “Optional Accessories” (p.117).

### ■ Precautions for use

- Use only the Ricoh rechargeable battery (DB-40).
- Use the RICOH BASE when charging the battery.
- Do not use the RICOH BASE to charge batteries other than the DB-40 rechargeable battery.
- Charge the battery in a well-ventilated place with an ambient temperature of 10-40 degrees.
- When the battery reaches the end of its service life, the working time becomes shorter even when it is correctly charged. Replace with a new battery.
- The battery will feel warm when charging is finished but this is not a malfunction.
- Remove the power plug from the electrical outlet if you do not intend to use the camera for a long period. If left plugged in, it may result in fire.

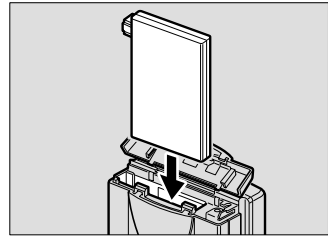
## Using the AC Adapter

When using the camera for a long period to shoot or playback images, connect the AC adapter and power the camera from a household electrical outlet.

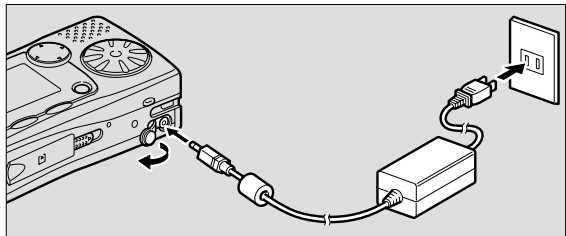
### About the AC adapter

Be sure to read the safety precautions before use.

- 1 Check that the camera is turned off and slide the battery cover open.**  
▣ See “Turning the Camera On and Off” (p.30).
- 2 Open the power supply terminal (DC-input) cover, set the AC adapter converter and then close the battery cover.**



- 3 Connect the AC adapter connection cable to the power supply terminal (DC-input) of the AC adapter converter.**
- 4 Insert the power plug into the electrical outlet.**



#### Important

- Insert the power plug and connection cable securely. If the plug or cable works loose during recording, the data may be lost or damaged.
- If you turn off the camera or disconnect the AC adapter while operating the camera (recording, playback, deleting, etc.), the data may be lost or damaged.
- If you do not intend to use the camera for a long period, disconnect the AC adapter from the camera and the electrical outlet.
- If you set the AC adapter converter, the power supply terminal (DC-input) cannot be closed.

# Storage Media

This camera records image files on an SD memory card.

## ■ Precautions for use

- Never insert or remove the card while the camera is turned on.
- Do not bend the card, subject it to strong force or impact, or drop it.
- Avoid using or storing the card in an environment where there is likely to be static electricity or electrical interference.
- Avoid using or storing the card in places that are subject to high temperature and humidity, in dusty places, or in an environment where corrosive substances are present.
- Do not allow dust or foreign matter to get inside the card cover.
- To avoid possible hazards, keep the card away from flames and do not dispose of it in fire.
- The card has a limited service life. If used for a long period, it may fail to record new files.

## ■ Data

- Data recorded on an SD memory card may be lost by incorrect handling by the user or a third party, by subjecting the card to static electricity or electrical interference, or by malfunction or repair of the camera. Ricoh Co., Ltd. assumes no liability for damages resulting from the loss of recorded data.
- Do not remove the battery, turn off the camera, or connect the AC adapter while data is being recorded on the card. The data stored on the card could be lost or damaged.
- You are advised to copy important data onto another media, such as a CD-R/RW or hard disk.

### About the Memory Card

You are recommended to use an SD memory card. If you are using an MMC (Multi-Media Card), the following points should be noted.

- You cannot record motion pictures.
  - The processing speed is slow.
- \* On account of the above limitations, we cannot guarantee operation of MMC.
- \* Please note you cannot use some manufacturers' MMCs.

#### Note

- SD memory cards with a capacity of up to 64MB can be used on this camera.

**Important**

- Be sure to turn the camera off before inserting or removing the card as this could result in loss or damage of the data stored on the card, or malfunction of the camera.
- You cannot record or delete data or format the SD memory card when the write-protect switch is set to [LOCK]. Release the lock first. See “To protect important data” (p.26).
- Before using a new card or a card that has been used on other equipment (such as a PC), format the card with the camera first. See “Formatting an SD Memory Card” (p.27).

**Tips**

**To protect important data**

- To avoid accidental recording or deleting of data, set the write-protect switch to [LOCK]. Release the lock to record or delete data.
- Keep the metal terminal parts of the memory card clean.
- If the card becomes damaged, it may result in loss of data.



**Inserting the SD Memory Card**

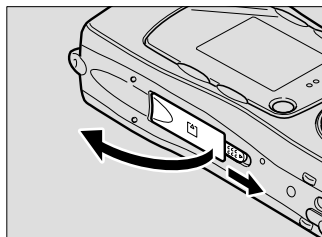
Turn the camera off before inserting the SD memory card.

**■ Inserting the card**

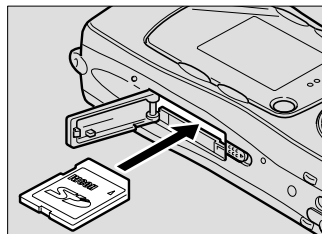
**1 Check that the camera is turned off.**

▣ See “Turning the Camera On and Off” (p.30).

**2 Slide the card cover switch in the direction shown by the arrow and open the card cover.**



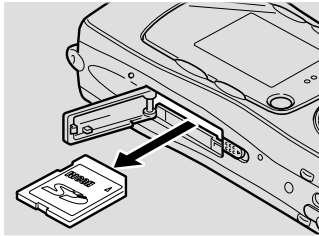
**3 Insert the card with the label facing toward you.**





## ■ Removing the card

- 1 Check that the camera is turned off.**  
 ■ See “Turning the Camera On and Off” (p.30).
- 2 Slide the card cover switch to open the card cover. Push the card in and then pull it out.**

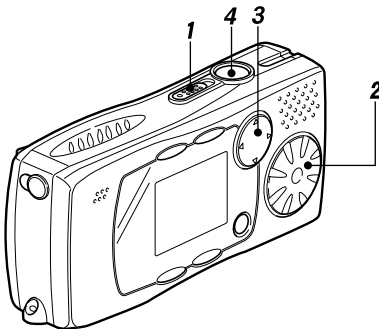


The card eject function is activated by pushing the card in. Keep the card horizontal when pulling it out.

## Formatting an SD Memory Card

Format an SD memory card.  
 Before using a new SD memory card or an SD memory card that has been used on another device (such as a PC), format the card with the camera first.

### ■ Operation Map



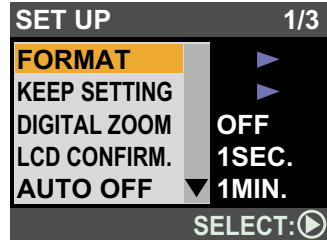
SETUP mode  
**SETUP**

Important

- Formatting will delete all the files recorded on the card (including protected files).
- Some SD memory cards formatted with other devices cannot be used.

- 1 Slide the power switch toward POWER and turn the camera on.**  
 ■ See “Turning the Camera On and Off” (p.30).
- 2 Set the mode dial to [SETUP].**

- 
- 3** Press the ▲ or ▼ button to select [FORMAT] and press the ► button.



- 
- 4** Press the shutter release button.



The [FORMATTING] message will be displayed. When formatting is completed, the screen will return to the SET UP menu.