
Appendix

Camera Settings When Connected to a PC	156
Setting the PC Connection Environment	156
Setting the Network Environment	158
Error Messages	160
Error Messages Displayed on the Web Browser	160
Other Error Messages	163
Troubleshooting	166
Restoring the Device Which Could not be Used anymore	166
Selecting “Never dial a connection”	167
Checking the Proxy Server	168
Installing the Dial-Up Adapter	169
Index	170
Functional Index	170
Alphabetical Index	174

Camera Settings When Connected to a PC

When the camera is connected to a PC by a USB cable or by LAN, depending on the PC or network environment, the camera may not function properly unless the settings are changed. This section deals with how to change the camera settings.

■ Character Input

Procedures for completing the entry prompt screen for PC connection environment and network environment require character input as explained below.

- 1 Choose the item for which you want to input characters and press the **▶** button to display the character input screen.
- 2 Move the cursor on the desired character by using the **▲** • **▼** • **◀** • **▶** buttons and press the **FUNCTION** button.
- 3 Press the **ENTER** button exit the character input screen.



■ Deleting

In step 2 above, use the **▲** • **▼** • **◀** • **▶** buttons to move the cursor to the right of the character and press the **🗑️** button.

Setting the PC Connection Environment

If the PC and the camera are connected by a USB cable, it is necessary to set their mutual IP addresses in order to send and receive data.

- Note**
- The 2 addresses set in this section are local addresses only used between the camera and the PC when they are directly connected.
 - The [IP ADDRESS: PC] and [IP ADD: RDC-i500] settings are only valid when the camera is connected to a Macintosh. They are invalid when the camera is connected to a PC running Windows. (This setting is not required in the case of Windows.)

● **IP Address: PC**

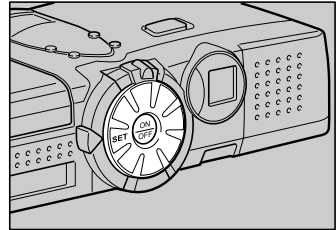
This is the IP address for the PC to which the camera is connected. The setting is in the form of [xxx.xxx.xxx.xxx] (each xxx being a figure from 0 to 255). The factory default setting is [192.168.187.183].

● **IP ADD: RDC-i500**

This is the camera's own IP address. The factory default setting is [192.168.187.184].

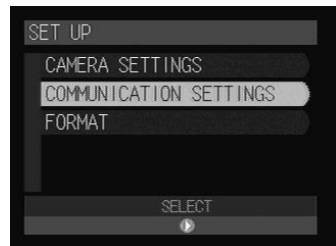
1 Set the mode dial to [SET].

The Setup menu will be displayed.



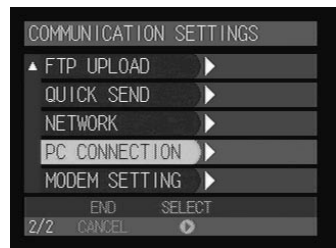
2 Select [COMMUNICATION SETTINGS] and press the ENTER button.

The screen for setting the communication function will be displayed.



3 Select [PC CONNECTION] and press the ENTER button.

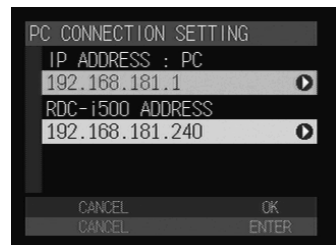
The screen for setting the PC connection will be displayed.



4 Set each item.

5 When you have finished making the settings, press the ENTER button.

The settings are completed and the screen returns to the Setup menu.



Setting the Network Environment

If you have connected the camera to a network using a LAN connection CF card, set the host name and various other addresses in order to send and receive data between the camera and other LAN equipment or a network.

The camera's factory default settings are relatively common, so normally there is no need to change the settings.

If transmission between the camera and the PC does not go smoothly, or if you wish to fix the camera's IP address, change the settings.



- If you change the IP address to another address, turn the power off and then turn it on again.

● RDC-i500 Host Name

This is the camera's name on the network. The factory default setting is blank. You can set the name at will.

● DNS SERVER ADD. (Domain Name Server Address)

Set the domain name server (DNS) address. The factory default setting is blank. If there is a domain name server on the network, set the address.

● GATEWAY ADD. (Gateway Address)

Set the gateway address. The factory default setting is blank. If there is a gateway on the network, set the address of the gateway.

● RDC-i500 IP ADDRESS

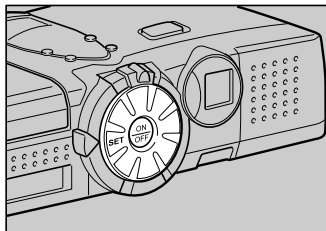
This is the camera's own IP address. The factory default setting is [0.0.0.0]. When set on [0.0.0.0], the IP address is obtained automatically from the network equipment (router, etc.) using DHCP.

If you wish to fix the camera's IP address, change the address. At this time, the first 2 or 3 of the 4 figures separated by dots "." must be the same as the network address of the network that you use. For further details, consult your network administrator.

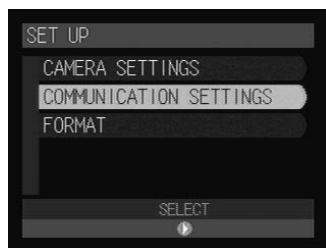
● SUBNET MASK

This is the setting for network control. The factory default setting is blank.

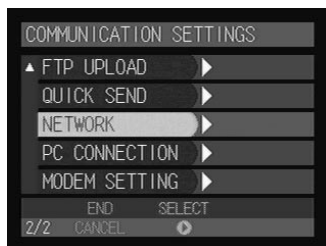
- 1 **Set the mode dial to [SET].**
The Setup menu will be displayed.



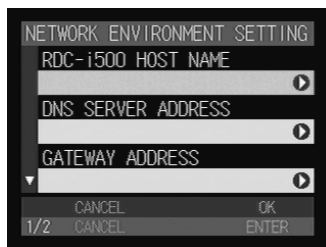
- 2 **Select [COMMUNICATION SETTINGS] and press the \blacktriangleright button.**
The screen for setting the communication function will be displayed.



- 3 **Select [NETWORK] and press the \blacktriangleright button.**
The screen for setting the PC connection will be displayed.



- 4 **Set the various items.**



- 5 **When you have finished making the settings, press the ENTER button.**
Setting is completed and the screen returns to the Setup menu.

Error Messages

In the case of misoperation or of failure due to some problem or other, an error message will be displayed. This section deals with the causes and remedies of problems.

- Note** • This section explains the error messages displayed on the PC screen. For details of the error messages displayed on the camera monitor, refer to the 'Camera' operation manual and 'Communication/Internet' operation manual.
Refer to the ReadMe file included in the CD-ROM provided for details or error messages, when using a Macintosh.

Error Messages Displayed on the Web Browser

These error messages are displayed when accessing the camera on the Web browser.

■ Common Error Messages

Error Message	Cause and Remedy
200 OK	Error occurred in transmission of data between browser and camera. Turn off camera and PC, reconnect USB cable and perform operation again.
400 Bad Request	Error occurred in transmission of data between browser and camera. Check connection and perform operation again.
404 Not Found	Error occurred in transmission of data between browser and camera. Check connection and perform operation again.
405 Method Not Allowed	Error occurred in transmission of data between browser and camera. Check connection and perform operation again.
500 Internal Server Error	Error occurred inside server. Check connection and perform operation again.

■ Error Messages Displayed on Camera Control Screen

Error Message	Cause and Remedy
Internal Error	Error has occurred in transmission of data between browser and camera. Click on [Back] button, check connection and perform operation again.
No CF Card	CF card has been specified as recording destination, but no card has been inserted. Click on [Back] button.

Error Message	Cause and Remedy
Card Error	Specified card cannot be used as recording destination. Click on [Back] button.
Memory full	Storage memory (internal memory or CF card) is full and no further recording is possible. Click on [Back] button.
Recording file Error	Error has occurred in recorded image. Click on [Back] button, check connection and perform operation again.

■ Error Messages Displayed on JOB Navi. Setup Screen

Error Message	Cause and Remedy
Input upload file name	[Transfer] button was clicked without specifying file name for [Browse...] .
File read Error	Invalid file selected for [Browse...]. Select Guide List or HTML template file.
Cannot read file anymore	Limit has been reached of number of Guide Lists or HTML templates capable of being saved in camera. Or no more space in memory for downloading files. Delete unwanted Guide Lists or HTML templates.
Cannot add list anymore	Upper limit of number of Guide Lists has been reached. Delete unwanted Guide Lists.
No CF Card	Cannot view contents of CF card as no card inserted.
File saving failed	Storage memory (internal memory or CF card) is full and recording process failed. Delete unnecessary files or insert another storage memory.
Cannot add image anymore	Upper limit of number of images in Guide List has been reached. Delete unwanted images.
Complete required information	No image title entered. Specify image title.
Same name template already exists	HTML file with same name already exists. Change file name.
Same name image already exists	Image with same title already exists. Change image title.
Too long file name (within 32 characters)	File name must be within 32 characters. Change file name.

■ Error Messages Displayed on Setup Screen

Error Message	Cause and Remedy
Input upload file name	[Transfer] button was clicked without specifying file name for [Browse...] .
File read Error	Invalid file selected for [Browse...]. Select file from address book.
Cannot add Address anymore	Upper limit of number of addresses in address book has been reached. Delete unwanted addresses.
Cannot add preset memo anymore	Upper limit of number of templates has been reached. Delete unwanted templates.
Cannot add Dial-up account anymore	Upper limit of number of dial-up accounts has been reached. Delete unwanted account.
Complete required information	No entry made in required item. Input entry.
Illegal characters included	Input correct characters.
Out of range: this value cannot be used	Number outside scope specified in item. Specify correct number.
File saving failed.	Storage memory (internal memory or CF card) is full and recording process failed. Delete unnecessary files or insert another storage memory.
Same dial-up name exists. Change to other name.	Specified dial-up account has been already registered. Use another dial-up account.
Same name already exists. Change name.	Specified name has been already registered. Use another dial-up account.
No data in address book	Address book has not been registered and backup file can not be made. Register address book and retry operation.

■ Error Messages Displayed on Setting Backup/Restoring Screen

Error Message	Cause and Remedy
Backup failed	Failed to create backup file due to lack of memory, etc. Close other applications and try again.
Input file parameter	Attempted to restore settings without specifying file name. Select file.
File read Error	Invalid file selected. Select correct backup file.
File restore Failed	Failed to restore backup file due to lack of memory, etc. Close other applications and try again.
File saving Error	Storage memory (internal memory or CF card) is full and recording process failed. Delete unnecessary files or insert another storage memory.

Other Error Messages

These error messages are displayed by the software, such as the expansion functions, TWAIN driver, direct upload, etc.

Error Message	Cause and Remedy
Other application is accessing to the camera. Would you like to wait?	More than one software attempted to send and receive data with camera. Wait a short while.
Incompatible version of NpxComm.dll. Please reinstall.	Problem file installed. Reinstall RDC-i Software from CD-ROM supplied.
Not connected to Camera. Please check connection.	<p>Camera not correctly connected. Check connection.</p> <p>If you remove the LAN cable and then replace it before selecting [disconnect] from the Explorer's file menu while camera and PC are connected, this message will remain displayed and reconnecting may not be established. In this case, establish connection again with following steps.</p> <ul style="list-style-type: none"> • Turn camera off and on. • Set mode dial to modes other than [📷](PC) and then back to [📷].
Timeout: Access to Camera terminated.	Camera not correctly connected. Check connection.
Cannot read from Flash Memory	Insufficient memory in PC. Reboot PC and perform operation without starting up other applications.
Cannot write to Flash Memory	Specified drive, folder or file already erased.
Drive is not formatted	Specified drive unformatted. Format.
Failed to access to the drive	Error has occurred in sending and receiving data with PC. Restart camera.

Error Message	Cause and Remedy
This drive cannot be formatted.	Specified drive cannot be formatted. Restart camera and try again.
This drive is read-only.	Specified drive is write-prohibited. Cancel write protection.
Illegal file name.	Incorrect file name specified when copying/moving. Specify correct file.
No space in the drive.	Copying/Moving not possible as drive is full. Delete unwanted files.
Already contents same file name.	File name specified when copying/moving already exists. Specify different file name.
Too deep folder tree.	Cannot create folder as folder layers too deep. Make layers more shallow.
Failed to delete.	Deletion of specified file prohibited.
This file / folder cannot be transferred.	Transfer of specified file/folder prohibited.
This file name is used by Camera.	Specified file name is used by this software. Specify other file name.
Cannot move folder to Camera.	Folders in a PC cannot be transferred to camera. Create a folder in camera first and then transfer files in the folders of the PC.
Folders cannot be added anymore.	Limit of number of folders has been reached. Delete unwanted folders.
Internal Error.	Error has occurred. Restart camera. If error persists, reinstall RDC-i Software from CD-ROM supplied.
This folder already contain a file named XX.	File name specified when copying/moving already exists. To overwrite, click on [OK].
This folder already contain a read-only file named XX.	File name specified when copying/moving already exists. To overwrite, click on [OK].
Cannot connect to Camera. Please check connection.	Camera not correctly connected. Check connection.
Communication failed. Please check connection.	Camera not correctly connected. Check connection.
Please choose the image to transfer.	Attempted to execute transfer without selecting image file. Select image file before transferring.
Insufficient memory: please close other applications.	Insufficient memory in PC. Reboot PC and perform operation without starting up other applications.
Failed to access to the file ○○	Drive has not been ready to access, or folder or file does not exist.
TWAIN Internal Error	Error occurred in TWAIN.DLL. Reinstall TWAIN driver from CD-ROM supplied.
Failed to initialize Windows Socket.	Error occurred when creating Windows socket. Reinstall WinSock.

Error Message	Cause and Remedy
Failed to receive Socket Data.	Camera not correctly connected or set. Check camera connection and settings.
Failed to send Socket Data.	Camera not correctly connected or set. Check camera connection and settings.
Failed to create Socket.	Error occurred when creating Windows socket. Reinstall WinSock. Reset port.
Cannot find necessary DLL.	Failed to initialize software. Reinstall Camera Software from CD-ROM supplied.
Cannot connect to Camera	Camera not correctly connected or set. Check camera connection and settings.
Cannot communicate with Camera	Camera not correctly connected or set. Check camera connection and settings.
Cannot read the file	Insufficient memory in PC. Reboot PC and perform operation without starting up other applications.
Set up Camera property	IP address has not been set in Camera. Set IP address by opening Camera property by using Internet Explorer.
No selected file.	Select BMP file or GIF file first and then send signature file.
Select a Signature file.	Automatic setting is used for all pixels of signature file. Select more than one signature file.
Fail to transfer Signature file. Reconfirm connection and retransfer.	Camera is not correctly connected to a PC. Check connection.

Troubleshooting

When setting of the USB driver can not be correctly recognized, please make the following operations.

Restoring the Device Which Could not be Used anymore

This section explains the remedy when your camera is recognized as an unknown device by a PC because you remove and replace the USB cable before installing the USB driver or canceling the USB driver installation on the way.

① Connect the camera to the PC using the USB cable and turn the camera on.

② Start the device manager.

[For Windows 98/Me]

Select [Settings] → [Control Panel] from the [Start] button. Double click on the [System] icon in the window that opens. Select the [Device Manager] tab from the [System Properties] dialog box.

[For Windows 2000]

Select [Settings] → [Control Panel] from the [Start] button. Double click on the [System] icon in the window that opens. Select the [System Properties] tab from the [Hardware] dialog box.

③ Check whether the “!” mark is displayed meaning that the device manager is disabled for [RICOH Camera Port] or [Universal Serial Bus Controller] of [Ports (COM/LPT)] .

④ Specify the “!”-marked device and click [Delete].

The confirmation message will be displayed. Click [OK].

⑤ Turn off both the camera and PC.

⑥ Remove the USB cable from the PC.

⑦ Uninstall the USB driver.



• To uninstall the USB driver, refer to page 13 “Installing the USB Driver”.

⑧ Install the USB driver again.

Selecting “Never dial a connection”

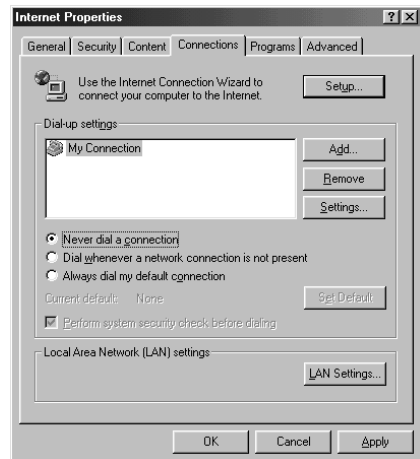
When you are trying to access the camera’s homepage with the dial-up connection configuration on a PC, the screen for selecting [Work offline] or [Retry] may be displayed.

Select [Retry] to view the camera’s homepage. However, your PC will begin dial-up procedure automatically when “Always dial my default connection” is selected on the Internet Properties dialog window of the Internet Explorer. To prevent this, turn the automatic dialing off with the following procedure.

For Internet Explorer (Version 5.x)

- 1 Right-click on the [Internet Explorer] icon on the desktop and then click on [Properties].
- 2 Click on the [Connections] tab.
- 3 Click on the radio button for [Never dial a connection] under [Dial-up settings].

When a PC has received mail with [Always dial my default connection] checked, the dial-up dialog (dial-up request dialog) will be displayed preventing from data communication.



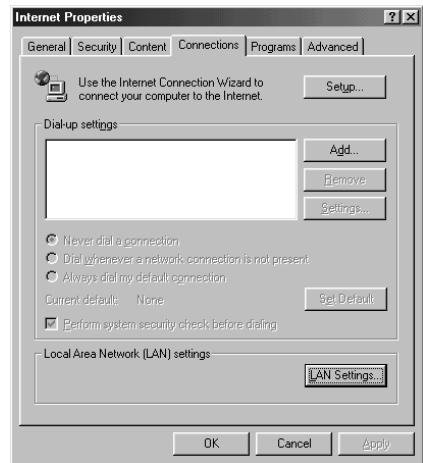
Automatic dialing-up will be canceled.

Checking the Proxy Server

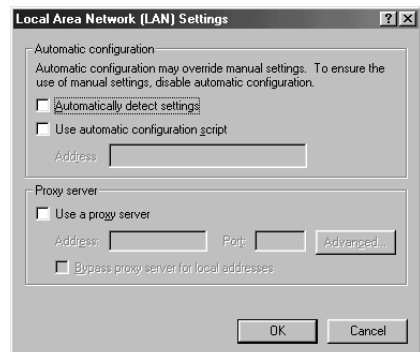
When you can not connect to the camera by controlling the browser, please make the following procedures to check the proxy server settings.

For Internet Explorer (Version 5.x)

- 1 Right-click on the [Internet Explorer] icon on the desktop and then click on [Properties].
- 2 Click on the [Connections] tab.
- 3 Click on the [LAN Settings...].



- 4 Click on the checkbox for [Use a proxy server] under [Proxy Server] if it is checked.



Installing the Dial-Up Adapter

When the dial-up adapter has not been displayed in the Network Component dialog, install the dial-up adapter in the following procedure.

- 1 Right-click on the [Network Neighborhood] icon on the desktop and then click on [Properties].**
- 2 Click on the [Configuration] tab and then click [ADD].**
The [Select Network Component Type] window will be displayed.
- 3 Select [Adapter] and click on [Add...].**
- 4 Select [Microsoft] for Manufacturers and click on [Dial-Up Adapter] for Network Adapter.**
- 5 Click on [OK].**
- 6 Restart the computer.**

The dial-up adapter is now added in the Network Component dialog. Then, install the dial-up server software.

See • P.146 "Installing the Dial-Up Server Software"

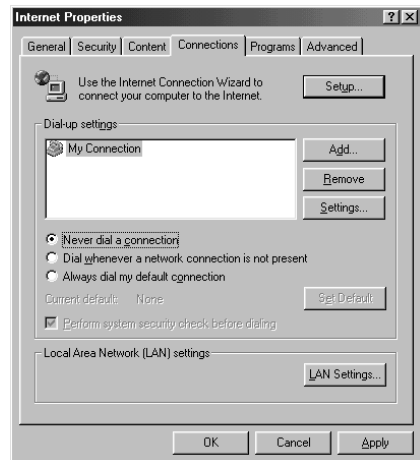
Checking the Dial-Up Settings

When the dial-up server does not work despite appropriate settings of receiving end for Direct Upload, check the following setting.

For Internet Explorer (Version 5.x)

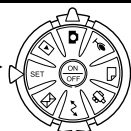
- 1 Right-click on the [Internet Explorer] icon on the desktop and then click on [Properties].
- 2 Click on the [Connections] tab.
- 3 Click on the radio button for [Never dial a connection] under [Dial-up settings].

When a PC has received mail with [Always dial my default connection] checked, the dial-up dialog (dial-up request dialog) will be displayed preventing from data communication.



Index

Functional Index

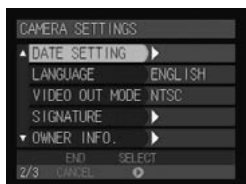


SET Mode (Setup)

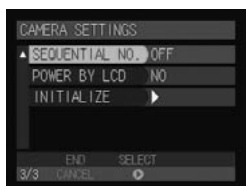
◆ CAMERA SETTINGS



... KEEP SETTINGS	Camera	P.108
... LCD CONFIRM.	Camera	P.109
... AUTO POWER OFF ...	Camera	P.110
... BEEP SOUND	Camera	P.111
... POWER SAVE	Camera	P.112

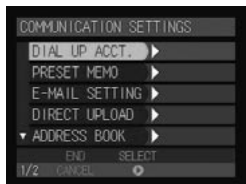


... DATE SETTINGS	Camera	P.31
... LANGUAGE	Camera	P.113
... VIDEO OUT MODE ...	Camera	P.114
... SIGNATURE	Camera	P.115
... OWNER INFO.	Camera	P.34

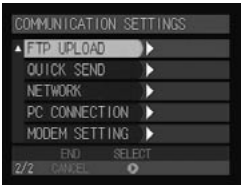


... SEQUENTIAL NO.	Camera	P.116
... POWER BY LCD	Camera	P.117
... INITIALIZE	Camera	P.118

◆ COMMUNICATION SETTINGS

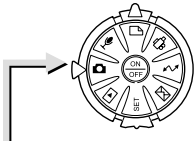


... DIAL UP ACCT.	Communication/Internet	P.24
... PRESET MEMO	Communication/Internet	P.42
... EMAIL SETTINGS ...	Communication/Internet	P.34
... DIRECT UPLOAD	Communication/Internet	P.48
... ADDRESS BOOK	Communication/Internet	P.39



... FTP UPLOAD	Communication/Internet	P.51
... QUICK SEND	Communication/Internet	P.44
... NETWORK	Connecting to a Ppersonal Computer	P.158
... PC CONNECTION	Connecting to a Ppersonal Computer	P.156
... MODEM SETTING	Communication/Internet	P.60

◆ FORMAT	Camera	P.35
-----------------------	--------------	------



Recording Mode    

◆ **MENU Button**



... CONT. MODE	Camera	P.52
... SELF-TIMER	Camera	P.62
... VOICE MEMO	Camera	P.54
... FOCUS	Camera	P.64
... REDEYE REDUC.	Camera	P.66



... FLASH STRENGTH ...	Camera	P.55
... DATE IMPRINT	Camera	P.67
... SPLIT-SCREEN	Camera	P.68
... SHARPNESS	Camera	P.71
... MONOCHROME	Camera	P.72

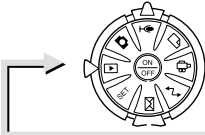


... INTERVAL	Camera	P.73
... AUTO BRACKET	Camera	P.74
... ISO SETTING	Camera	P.75
... PHOTOMETRY	Camera	P.76
... TIME EXPOSURE	Camera	P.77



... SIGNATURE	Camera	P.78
---------------------	--------------	------

◆ J Button	Image Capture Guide List	Connecting to a Ppersonal Computer .	P.106
-------------------------	-------------------------------	--------------------------------------	-------



Play Mode (▶)

◆ MENU Button

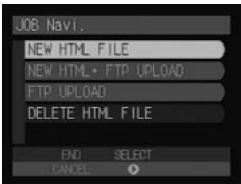


- ... SEND Communication/Internet P.70, 73
- ... QUICK SEND Communication/Internet P.68
- ... COPY Camera P.88
- ... PROTECT Camera P.92
- ... AUTO PLAYBACK Camera P.95



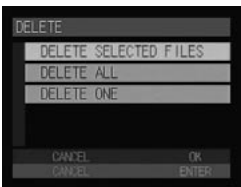
- ... DPOF SETTING Camera P.96
- ... VOICE MEMO Camera P.102

◆ J Button



- ... NEW HTML FILE Communication/Internet P.101
- ... NEW HTML + FTP UPLOAD Communication/Internet P.101
- ... FTP UPLOAD Communication/Internet P.104
- ... DELETE HTML FILE .. Communication/Internet P.103

◆ Button Deleting Camera P.103





PC Mode (↔)

Connecting to a Personal Computer



Communication Mode (✉)



... E-MAIL	Communication/Internet	P.83
... DIRECT UPLOAD	Communication/Internet	P.94

Alphabetical Index

A

- Address Book
 - Sending to a PC 66
- Address book
 - Deleting 65
 - Displaying 62
 - Editing 64
 - Saving 65
- Application software
 - Installing
 - For Macintosh 17
 - For Windows 15

B

- Backup file
 - Address Book 65
 - Camera settings 97, 136
- Backup settings
 - Restoring to the camera 98
- Browser 28

C

- Camera settings
 - Restoring 97
- Camera's homepage 28
 - Saving 30
- COM port
 - Setting 25

D

- Dial-up account
 - Deleting 86
 - Displaying 83
 - Editing 85
 - Entering 84
- Dial-up server 146, 169
- Direct Upload
 - Displaying the dial-up accounts ... 87
 - Selecting a dial-up account 88
 - Setting the receiving PC 146
 - Setting the Send-to folder name and server 89

E

- E-mail
 - Setting 72
- Error messages 160
- Explorer Plug-In 130

F

- FTP Upload
 - Displaying the dial-up account 94
 - Selecting a dial-up account 95
 - Setting a server 96

G

- Guide List
 - Creating 110, 116
 - Deleting 122, 127
 - Editing 118
 - Recording images 106, 112
 - Saving on the PC 123
 - Sending to the camera 124

I

- Image Capture Guide List
 - Creating 104
 - Displaying 114, 126
 - Using on Excel 104
 - Using on Word 110
 - Viewing thumbnail images 38
- Image Capture Guide List Tool Kit 103

J

- JOB Navi. Func. Image Capture Guide List 102

L

- LAN
 - Connecting the camera 23

M

- Microsoft Power Point 132
- Modem
 - Setting 70
- Motion pictures
 - Recording 53

N	
Network environment	158

O	
Owner Information	
Setting	68

P	
PC connection environment	156

Q	
Quick Send	
Displaying the dial-up account	90
Selecting a dial-up account	91
Selecting a send-to name	92
Selecting the size of the image to be sent	93

R	
RDC-7/i700 Mounter	133

S	
Sound	
Recording	57
Saving	60
Still image	
Shooting	
Using the Web browser	44

T	
Template	
Deleting	77
Entering	76
Setting	74
Text files	
Shooting	49
Thumbnail image	
FILE PROPERTY	33
FILE PROPERTY in Guide List	40
Thumbnail images	31
File property	33
Thumbnail property in Image Capture Guide List	40
TWAIN function	140

U	
USB cable connection	
For Windows	20
USB driver	13, 14
Installation for Macintosh	14
Installation for Windows	13

Ricoh Service Offices

3-2-3, Shin-yokohama
Kohoku-ku, Yokohama-shi
222-8530, Japan
http://www.ricoh.co.jp/r_dc

Ricoh Factory Service Center
3235 Sunrise Blvd.,
Suite2 Rancho Cordova,
CA 95742
<http://www.ricohzone.com/>

Ricoh Europe B.V.
Photo Products Division
P.O. Box 75640
1118 ZR Schiphol
The Netherlands
<http://www.ricoh-red.com/>
<http://www.ricoh-europe.com/>
E-mail:camera@ricoh.nl

Ricoh Europe B.V.
Düsseldorf Branch
Photo Products Division
Oberrather Straße 6
D-40472 Düsseldorf
Germany

Ricoh Photo Products (Asia), Ltd.
Unit D, E & F
24/F., China Overseas Building
139 Hennessy Road, Wan Chai
Hong Kong

Ricoh Australia Pty. Ltd.
8 Rodborough Road
Frenchs Forrest, N.S.W. 2086
Australia
<http://www.ricoh.com.au>



RICOH CO., LTD.

3-2-3, Shin-yokohama
Kohoku-ku, Yokohama-shi
222-8530, Japan
L2172553

