
Caplio^{*} 300G

RICOH

Operation Manual



For the safe use of your camera, be sure to read the Safety Precautions thoroughly before use.

Using These Manuals

The two manuals included are for your Caplio 300G.

Please read this first:

Quick Start guide (printed manual)

This booklet is designed to help you enjoy your Caplio 300G right away by providing quick explanations: "Getting Ready to Shoot", "Shooting Images", "Viewing Images", and "Connecting to Your PC."

Before using your camera, first read this manual.



Please read as needed:

Operation Manual (this manual).

This explains how to use all the functions of your Caplio 300G.

To get the most out of your Caplio 300G, please read it through once and refer to it whenever necessary.

Meaning of Symbols

The following symbols are used in this guide:



Important

This indicates important information and restrictions.



Note

This indicates supplementary explanations and useful tips on camera operations.



Terms

This indicates an explanation of a technical term.



Reference

This indicates page(s) relevant to a particular function.

"p.xx" is used to refer you to pages in this manual.

Table of Contents

Using These Manuals	2	Section 3 Using Special Features for Improved Photography	
Meaning of Symbols	2	Using the Flash.....	47
Chapter 1 Using Your Camera		Using the Self-Timer	49
Section 1 Getting Started		Changing the Exposure (EXPOSURE COMP.).....	50
Checking that everything is Packed.....	6	Using Natural and Artificial Lighting	
Names of Parts	7	(WHITE BALANCE).....	52
How to Use the Mode Dial	8	Choosing Picture Quality Mode/Image Size	
Inserting the Batteries	9	(PIC QUALITY/SIZE).....	55
Using the Rechargeable Battery	10	About Picture Quality Mode	55
Inserting the rechargeable battery.....	10	About Image Size	55
Removing the rechargeable battery	10	Changing Picture Quality Mode/Image Size of a	
Using the AC Adaptor	11	Still Image	56
Setting up the AC adaptor	11	Changing the Image Size of a Movie	57
Removing the AC adaptor	12	Manual Focus Shooting (FOCUS).....	58
Turning the Power On/Off	13	Manual Focus Shooting	58
To turn the camera On	13	Shooting at a Fixed Distance	59
To turn the camera Off	13	Changing the Light Metering (PHOTOMETRY).....	60
Setting the Date and Time	14	Sensitivity Settings (ISO SETTING)	62
Inserting the SD Memory Card	15	Changing the Edge Quality of Still Images	
Inserting the SD Memory Card.....	15	(SHARPNESS).....	63
Removing the SD Memory Card.....	16	Shooting Consecutively with Different Exposures	
How to Use the LCD Monitor	17	(AUTO BRACKET).....	64
Screen Examples when Shooting Pictures.....	17	Setting the Exposure Time (TIME EXPOSURE)	66
The Screen During Playback.....	20	Shooting Pictures Automatically at Set Intervals	
Switching the Screen Display	21	(INTERVAL)	67
Button Functions	22	Inserting the Date into a Still Image (DATE IMPRINT). 69	
Screens.....	23	Returning the Shooting Menu Settings to their Defaults	
The Basics of the Shooting Menu/Playback Menu 27		(RESTORE DEFAULTS).....	70
The Basics of the Setup Screen	28	Displaying the Grid Guide on the LCD Monitor	71
Section 2 Basic Shooting		Changing Shading for Shooting Text (DENSITY)....	72
How to Hold the Camera.....	30	Section 4 Viewing Still Images and Movies	
How to Focus	31	Viewing the Photo You Just Took.....	74
Shooting Still Images	33	Displaying an Enlarged View of the Still Image	
Check the Focus and Shoot	33	Displayed	75
(Half-press).....	33	Deleting the Displayed Still Image or Movie.....	76
Capture the Moment Shooting (Full-press)	34	Viewing a Still Image or Movie	77
When the Subject is not Centered on Your Composition		Viewing Still Images Recorded on an SD Memory	
(Focus Lock).....	35	Card	77
Shooting with Scenery-Matching	36	Viewing Still Images Recorded on Internal Memory.....	78
Combination of Scene Mode and Function.....	38	Viewing Movies	79
Shooting with Multi-Shot	39	Viewing at a Glance.....	80
Making Multi-Shot Settings (CONT. MODE)	40	Enlarged Viewing.....	81
Shooting with Multi-Shot.....	41	Showing Photos in Order Automatically	
Shooting with S Multi-Shot	41	(SLIDE SHOW)	82
Shooting with M Multi-Shot.....	41	Viewing on a Television.....	83
Shooting Movies	42	Section 5 Deleting Still Images and Movies	
Shooting with the Zoom	43	Deleting Unwanted Still Images or Movies	85
Shooting with the Digital Zoom	44	Deleting One Still Image	85
Shooting Close-ups (Macro Photo).....	45	Deleting All Frames at Once	86

Deleting Multiple Frames at Once	87
Write-protecting Your Images (PROTECT).....	88
Protecting the Displayed Still Image.....	88
Protecting All Still Images.....	90
Protecting Multiple Still Images or Movies at Once	91
Copying the Contents of Internal Memory to a Memory Card (COPY TO CARD)	92
Using a Printing Service (PRINT)	93
Setting DPOF for the Still Image Displayed.....	93
Setting DPOF for All Still Images.....	94
Setting DPOF for Multiple Still Images	95
Section 6 Changing Camera Settings	
Getting the SD Memory Card Ready for Use (CARD FORMAT).....	97
Formatting Internal Memory (IN FORMAT).....	98
Changing Power-Save Mode Settings (POWER SAVE)	99
Changing Auto Power-Off Settings (AUTO POWER OFF)	100
Beep at Recording (BEEP SOUND)	101
Changing File Name Settings (SEQUENTIAL NO.)	102
Changing Image Confirmation Time (LCD CONFIRM.)	103
Adjusting the Brightness of the LCD Monitor (LCD BRIGHTNESS).....	104
Changing the Display Language (LANGUAGE)	105
Changing the Playback Method for Viewing on TV (VIDEO OUT MODE).....	106

Chapter 2 Playing back Images on a Computer (Pictures/Movies)

Section 1 Downloading Images to a Computer (For Windows)

Using the Software Provided	108
Software and OS Applicability Table	108
System Requirements.....	109
Preparing to Download Images to Your Computer	110
Installation.....	111
For Windows 98/98SE/Me/2000.....	111
Uninstalling the Software.....	112
(For Windows 98/98SE/Me/2000)	112
For Windows XP	113
Uninstalling the Software.....	114
(For Windows XP)	114
Installing Acrobat Reader.....	115
Connecting the Camera to a Computer	116
Downloading Pictures to Your Computer.....	117
For Windows 98/98SE/Me/2000.....	117
For Windows XP.....	118
How to Use the RICOH Gate L	120
The RICOH Gate L Window	120
How to Use the Optional settings	121
How to Use the Background Illustration Settings.	122

For Downloading Images Directly to Your Computer from an SD Memory Card	123
Images in a PC Card.....	123

Section 2 Downloading Images to a Computer (For Macintosh)

Using the Software Provided	125
Software and OS Applicability Table.....	125
System Requirements	126
Preparing to Download Images to Your Computer	127
Installation	128
For Mac OS 8.6 to 9.2.2.....	128
For Mac OS X 10.1.2 to 10.2	129
Uninstalling the Software (For Mac OS 8.6 to 9.2.2).....	130
Uninstalling the Software (For Mac OS X 10.1.2 to 10.2).....	130
Connecting the Camera to a Computer	131
Downloading Pictures to Your Computer	132
For Mac OS 8.6 to 9.2.2.....	133
For Mac OS X 10.1.2 to 10.2	134
The RICOH Gate L Window.....	135
How to Use the Optional Settings	136

Section 3 Displaying Thumbnail Images (How to Use DU-10)

Starting and Exiting DU-10	138
DU-10 Window	138
Exiting DU-10	138
Thumbnail Display Description	139
Switching the Ordering of Images	140
Changing the Display Size	141
Viewing Images in a slide show.....	142
To View a slide show	142
Using Auto slide show.....	143
How to Use the slide show Dialog Box	143
Viewing Image Information	144
Using the File Menu	144
Using the Shortcut Menu.....	144
Displaying the Viewer Screen.....	145
Viewer Screen.....	145

Appendices

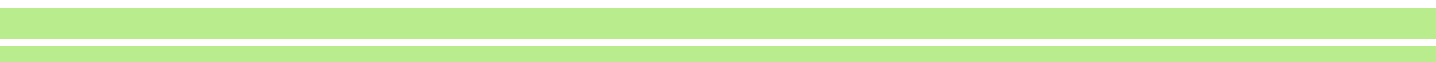
A. Specifications	147
B. Optional Accessories	149
C. Using the Accessory Shoe.....	149
D. SD Memory Card Recording Capacities	150
E. Using Your Camera Abroad	150
F. Cautions on Use.....	151
G. Care and Storage	152
H. Troubleshooting	153
I. Error Messages	159
J. About the Warranty and Servicing	160
Ricoh Service Offices	163



Chapter 1 Using Your Camera

Section 1 Getting Started

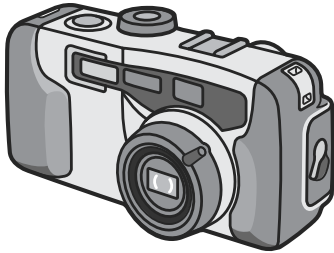
This section explains how to get your camera ready, from taking it out of the package to preparing to shoot.



Checking that everything is Packed

The following items should be included with the camera. Please make sure everything was packed.

Caplio 300G

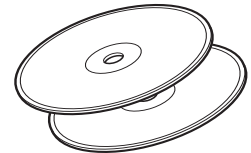


CD-ROM

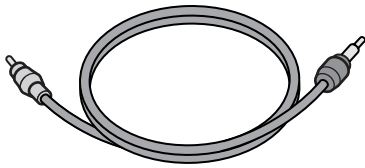
The software and the operation manual are included on this CD-ROM.

CD-ROM from Kodak

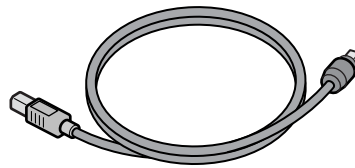
Contains the Kodak EasyShare software.



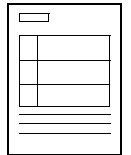
Video Cable



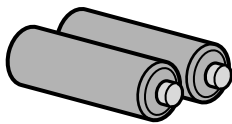
USB Cable



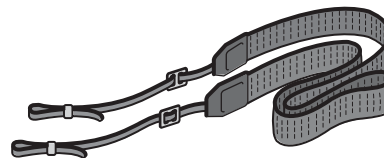
Warranty Card



AA Alkaline Batteries (2)



Neckstrap



Safety Precautions

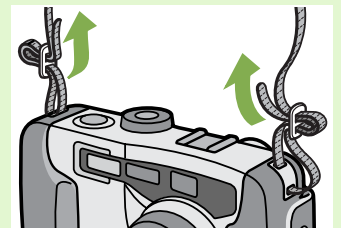


Quick Start Guide



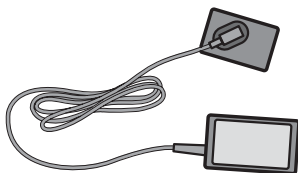
Attaching the neck strap to the camera

So you don't drop your camera, attach the included neck strap. Thread the tips of the neckstrap through the camera's eyelets and attach them as shown.

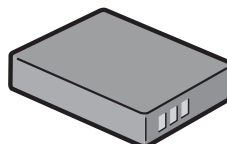


Optional Accessories

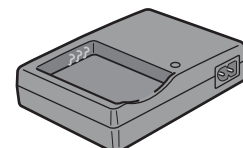
AC Adaptor (AC-4a)



Rechargeable Battery (DB-43)



Battery Charger (BJ-2)



- Other products sold separately: PC Card Adaptor (FM-SD53)



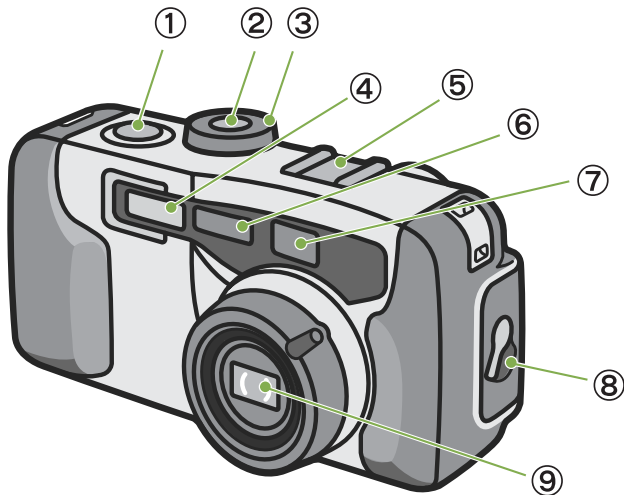
- In the unlikely event that something is missing or damaged, please contact the store where you purchased the camera.
- After checking the contents of the warranty card, please keep it in a safe place.

Names of Parts

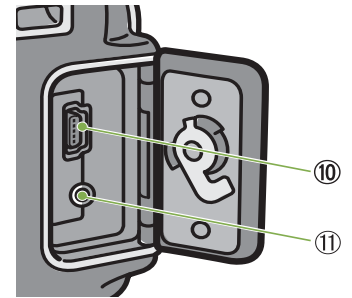
It is necessary to know these in order to understand the explanations in this manual. Check the following.

■ Camera

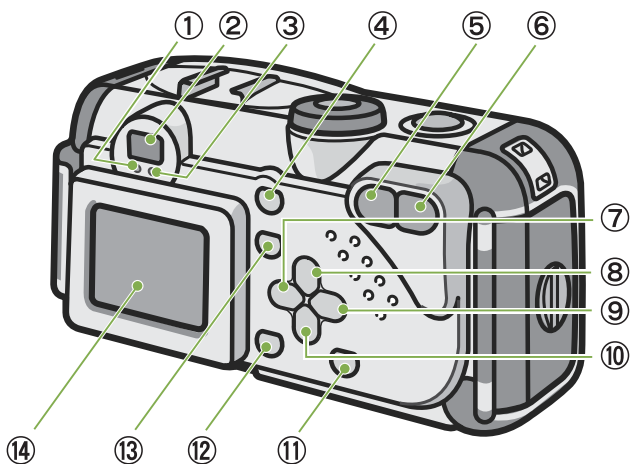
Front View



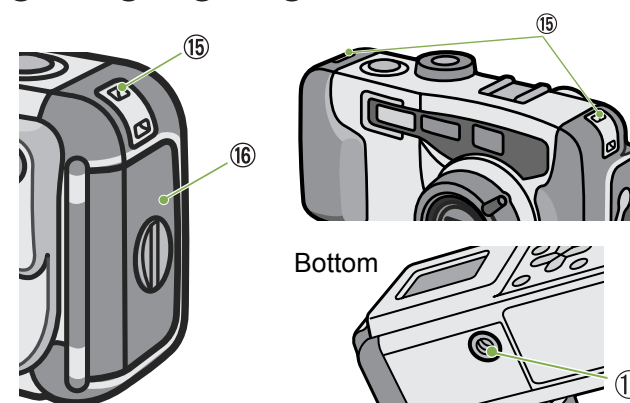
1. Shutter release button
2. Power button
3. Mode Dial
4. Flash
5. Accessory Shoe
6. AF Window
7. Viewfinder
8. Terminal Cover
9. Lens
10. USB Terminal
11. Video Out Terminal



Rear View



1. Auto Focus Lamp
2. Viewfinder
3. Flash Lamp
4. (Delete)/ (Self-timer) Button
5. (Wide-angle)/ (Thumbnail Display) Button
6. (Telephoto)/ (Enlarged View) Button
7. (Quick Review) Button
8. (Flash) Button
9. Button
10. (Macro) Button
11. **DISPLAY** Button
12. **OK** Button
13. **MENU** Button
14. LCD Monitor



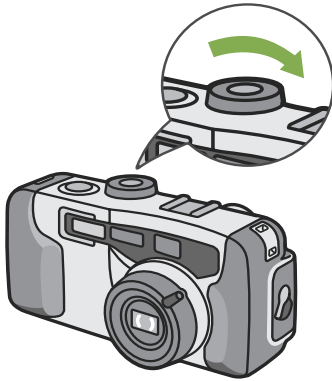
Left Side, looking from the front

How to Use the Mode Dial




The Mode Dial is on the top of the camera.

The Mode Dial is used to select the desired mode and operation for shooting and playback (still image viewing).

- 1 Turn the Mode Dial to the symbol of the mode you want to use.



Mode Dial Symbols and Functions

Symbol	Mode Name	Function
SETUP	Setup Mode	Allows you to set and confirm camera settings.
	Movie Mode	Allows you to record movies.
SCENE	Scene Mode	Allows you to optimize the camera settings for six different scenes.
	Shooting Mode	Allows you to shoot still images.
	Playback Mode	Allows you to play back your movies and still images or delete them.

Inserting the Batteries

The following batteries can be used in the camera. Please choose which kind to use according to your needs.

Battery Type	Feature
AA Alkaline Batteries (LR6) (included)	You can obtain them anywhere, so they are convenient for travel. However, in a low-temperature environment the number of shots you can take will decrease. Warm the batteries before use.
Rechargeable Battery (DB-43, DB-40) (sold separately)	This is a lithium-ion battery. This is economical because you can recharge it using the battery charger BJ-2 (sold separately) and use it over and over again. They last a long time, so they are convenient for travel.
Nickel-Hydrogen Battery (available in stores)	This is economical because you can recharge it and use it over and over again. Please use a recharger available in stores.



Below is an indication of the number of images you can take.

Battery Type	Number of Shots	Number of Shots (In the Synchro-Monitor Mode: see p.21)
AA Alkaline Batteries (LR6)	approx. 50	approx. 60
Rechargeable Battery	approx. 350	approx. 400

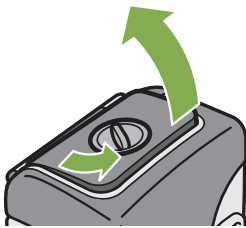
The number of shots is based on a temperature of 22 degrees celsius, shooting at 30-second intervals and one out of every two being shot with the flash.

If you set the camera to the Power-Save mode, the number of shots you can take will increase.

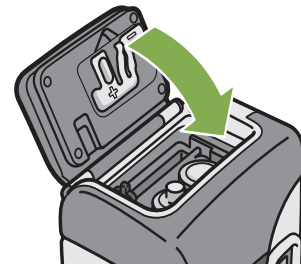
In addition to the batteries, you can use the AC Adaptor (sold separately).

Insert the batteries following these steps.

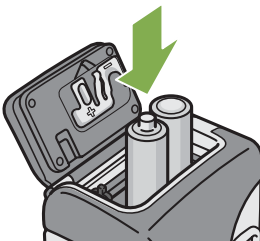
- 1 Turn the battery/card cover's knob toward the ⊖ mark to open the cover.




- 3 Close the battery/card cover and turn the knob toward the ⊕ mark.



- 2 Insert the two batteries, making sure they are facing the correct way.



When the batteries wear out

Just before the batteries wear out,  is displayed on the LCD Monitor. When this happens, replace the batteries with a fresh set.




- Before opening or closing the cover, make sure that any contaminants adhering to the camera, such as water, sand, or mud, are removed from it. Do not open and close the cover in a place where such contaminants can easily get into the camera.
- Other batteries, such as manganese (R6) and Ni-Cd batteries cannot be used.
- Please remove the batteries to store the camera if you are not going to use it for long periods of time.
- The strength of alkaline batteries varies by brand and become weaker the longer it is from the time of manufacture. Battery life for alkaline batteries is drastically reduced when cold.
- Nickel metal hydride batteries (available in stores) are not charged at the time of manufacture. Charge before use.
- The battery may become very hot immediately after operation. Turn the camera off and leave it to cool down sufficiently before removing the battery.

Using the Rechargeable Battery

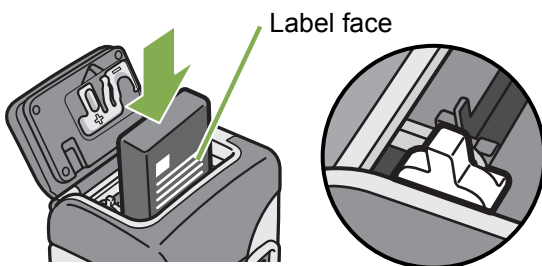
The DB-43 rechargeable battery (sold separately) is convenient for extended use because it can be used over and over again.


Inserting the rechargeable battery

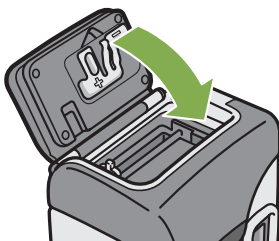
- 1 Make sure the power is off.
- 2 Turn the battery/card cover's knob toward the  mark to open the cover.




- 3 Insert the rechargeable battery. Push the battery in firmly until it is automatically locked into place with the yellow latch.



- 4 Close the battery/card cover and turn the knob toward the  mark.

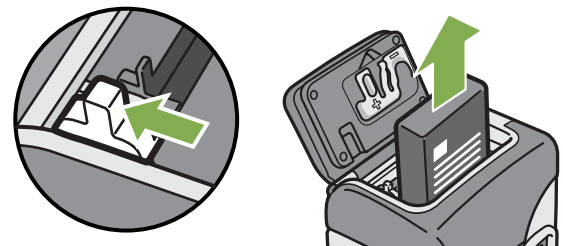



Removing the rechargeable battery

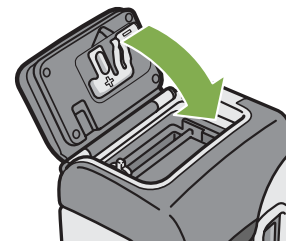
- 1 Make sure the power is off.
- 2 Turn the battery/card cover's knob toward the  mark to open the cover.



- 3 Release the yellow latch to remove the battery.



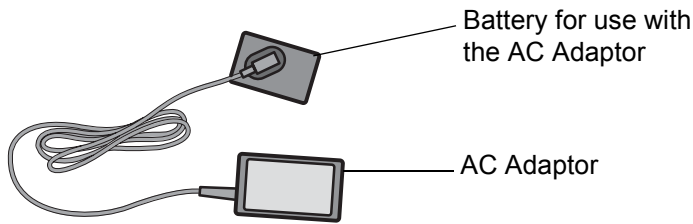
- 4 Close the battery/card cover and turn the knob toward the  mark.




- Before opening or closing the cover, make sure that any contaminants adhering to the camera, such as water, sand, or mud, are removed from it. Do not open and close the cover in a place where such contaminants can easily get into the camera.
- Remove the batteries if you are not going to use the camera for a long period of time.
- The batteries may become hot after extended use. Touching the batteries immediately after use could result in burns to your fingers.
- For recharging the battery, use battery charger BJ-2 (sold separately).

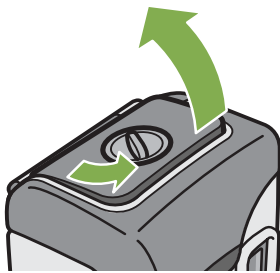
Using the AC Adaptor

When shooting or viewing still images for a long time, or when connecting to your computer, use of the AC Adaptor (sold separately) is recommended.

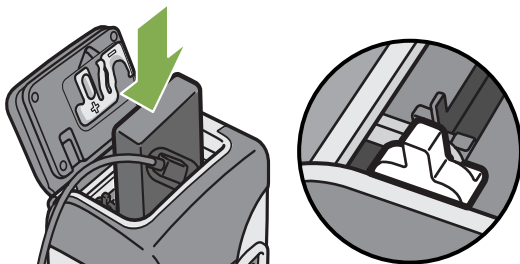


Setting up the AC adaptor

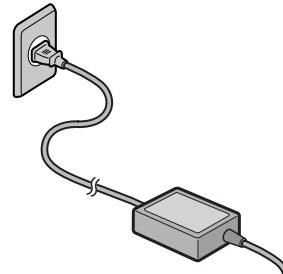
- 1 Make sure the power is off.
- 2 Turn the battery/card cover's knob toward the  mark to open the cover.



- 3 Insert the AC Adaptor Battery. Push the battery in firmly until it is automatically locked with the yellow latch.



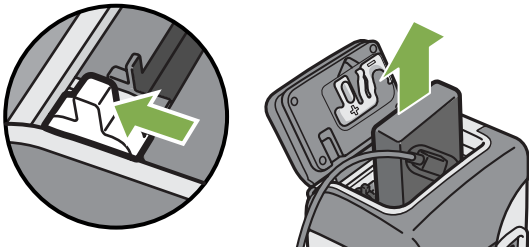
- 4 Plug the power cord into an outlet.



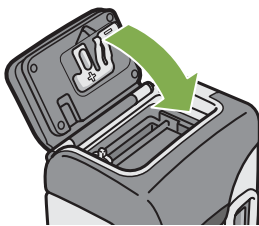
- Be sure to firmly attach cables and plug in cords.
- When you are not using the camera, unplug the AC Adaptor from the camera and the power outlet.
- While in use, if you detach the AC Adaptor or unplug it from the outlet, data may be lost.
- The AC adaptor is used with the battery/card cover open. Do not attempt to close it.

Removing the AC adaptor

- 1 Make sure the power is off.
- 2 Unplug the power plug from the outlet.
- 3 Release the yellow latch to remove the battery.



- 4 Close the battery/card cover and turn the knob toward the ⊖ mark.

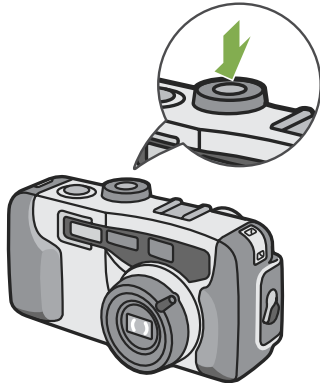


Turning the Power On/Off

The camera is switched between On and Off as follows.

To turn the camera On

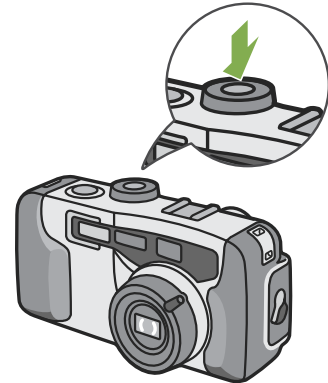
- 1 Press the power button



The flash lamp and auto-focus lamp will flash alternately for several seconds.

To turn the camera Off

- 1 Press the power button



Auto Power-off

- If the camera goes unused for a set period of time, it will automatically turn itself off to save power. To use the camera again, simply press the power switch.
At time of purchase, the Auto Power-off function is set to one minute.
- The Auto Power-off function does not work when connected to your computer.



For how to change the Auto Power-off time, see p.100.

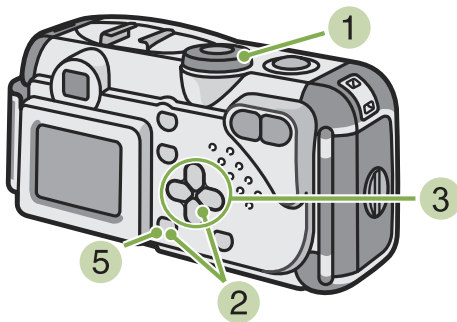
Setting the Date and Time

You can take still images with the time or date stamped onto the picture.

Immediately after purchasing the camera, the date and time settings will not be correct, so be sure to set the date and time before using this feature.

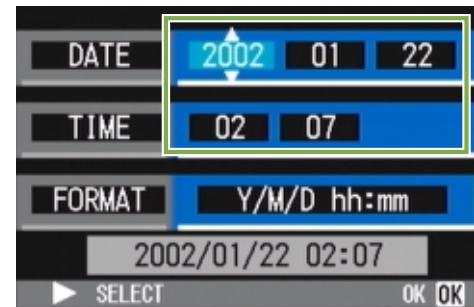
To set the date and time, follow the steps below.

Buttons used here

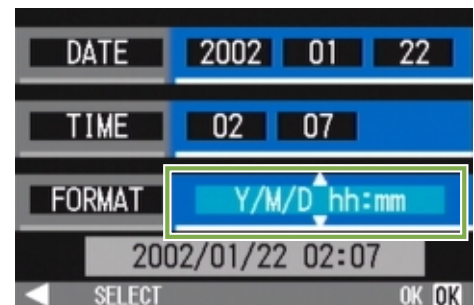


- Set the year, month, date and time by pressing ▲▼◀▶.

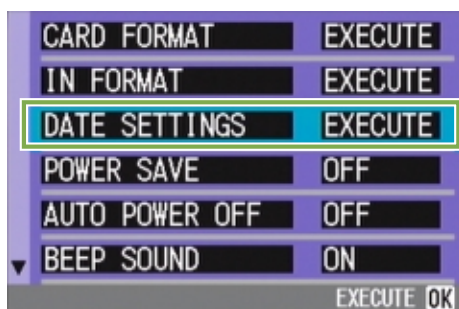
If you hold down the ▲▼ buttons, you can increase/decrease the value quickly.



- In [FORMAT], choose the Date and Time format.



- Make sure the power is on and then turn the Mode Dial to SETUP (Setup Mode). The Setup screen is displayed on the LCD Monitor.
- Press the ▼ button to select [DATE SETTINGS] and then press the **OK** button.



- Check the display on the bottom of the screen and then press the **OK** button. Once you have set the date and time, the display returns to the Setup screen.



If the batteries are removed for about two weeks, the date and time settings will be lost. These settings must be made again.

Inserting the SD Memory Card

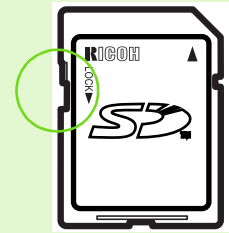
You can record the still images and movies you have taken on SD Memory Cards (available in stores) or in the camera's internal memory.



Write-protecting your images

If you move the card's write-protection switch to LOCK, your still images cannot be accidentally erased, and the memory card cannot be formatted. If you return the switch to the former position, it is once again possible to erase images and format the card.

It is recommended to switch to LOCK after recording important images.



The internal memory capacity is 8MB.



About where to record

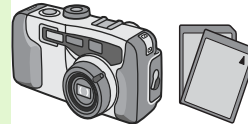
When an SD Memory Card is not inserted, the camera records images in the internal memory; when an SD Memory Card is inserted, it records images on the SD Memory Card.

When no memory card is loaded



Records to
internal
memory

When an SD Memory Card is loaded



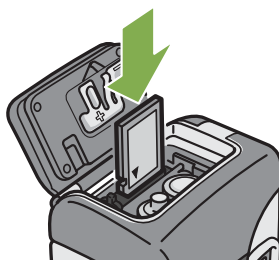
Records to
SD Memory
Card

Inserting the SD Memory Card

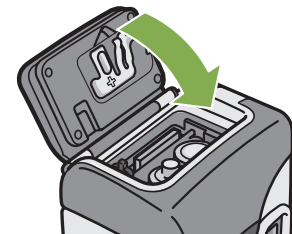
- 1 Turn the power off.
- 2 Turn the battery/card cover's knob toward the ⊖ mark to open the cover.



- 3 Make sure the card is facing the right way and then push the card all the way in until it clicks




- 4 Close the battery/card cover and turn the knob toward the ⊕ mark.



When inserting the SD Memory Card, take care not to get any dirt on the card's metal parts.

Removing the SD Memory Card

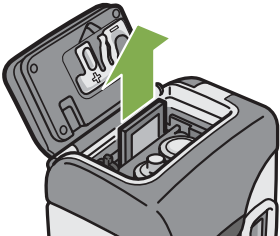
- 1 Make sure the power is off.
- 2 Turn the battery/card cover's knob toward the  mark to open the cover.




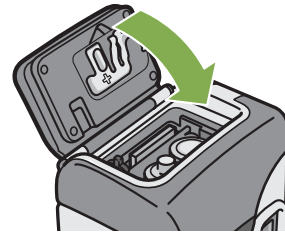
- 3 Press the card gently and release it. The card pops out just a little.



- 4 Gently take the card out of the camera.



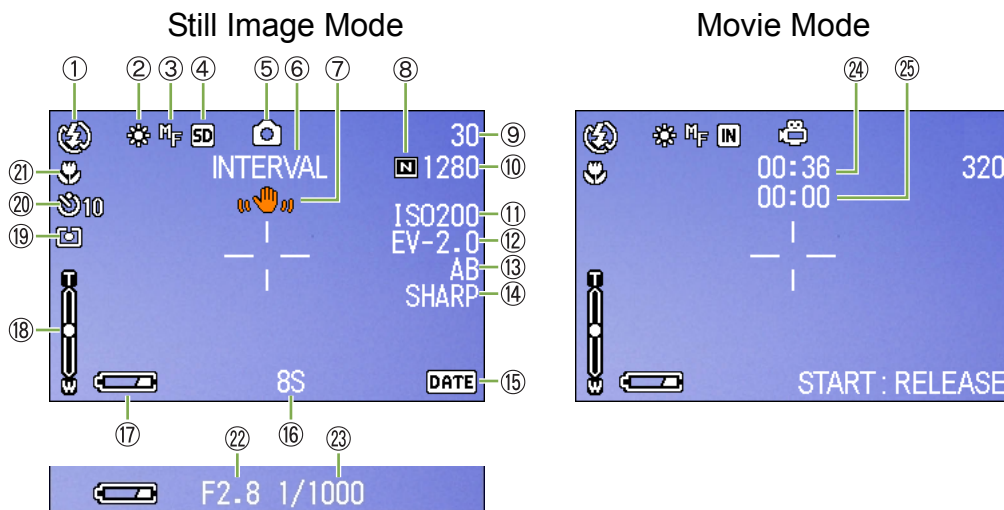
- 5 Close the battery/card cover and turn the knob toward the  mark.



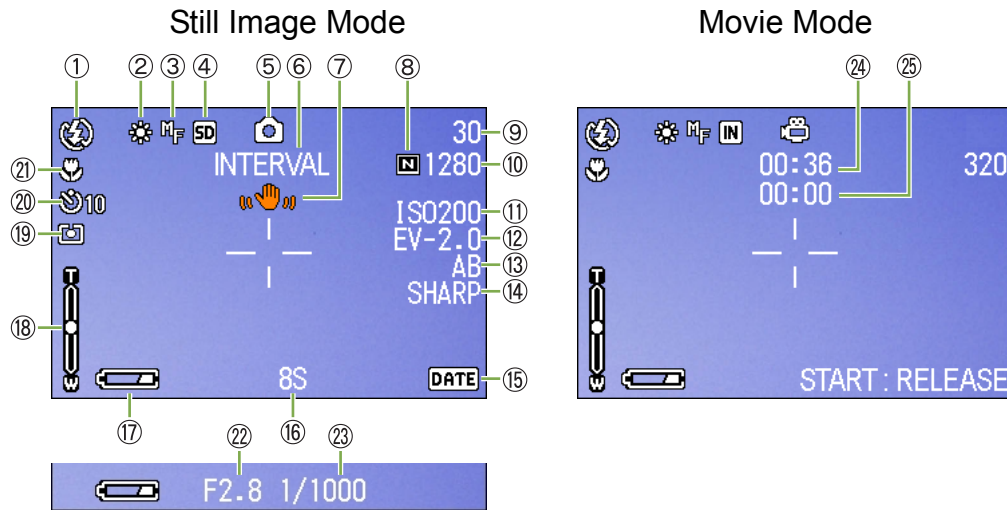
How to Use the LCD Monitor

The LCD Monitor can be used to view the subject when you are shooting an image, as well as for playing back movies and still images. Symbols and numbers indicating the camera's status and settings are displayed on the screen of the LCD Monitor.

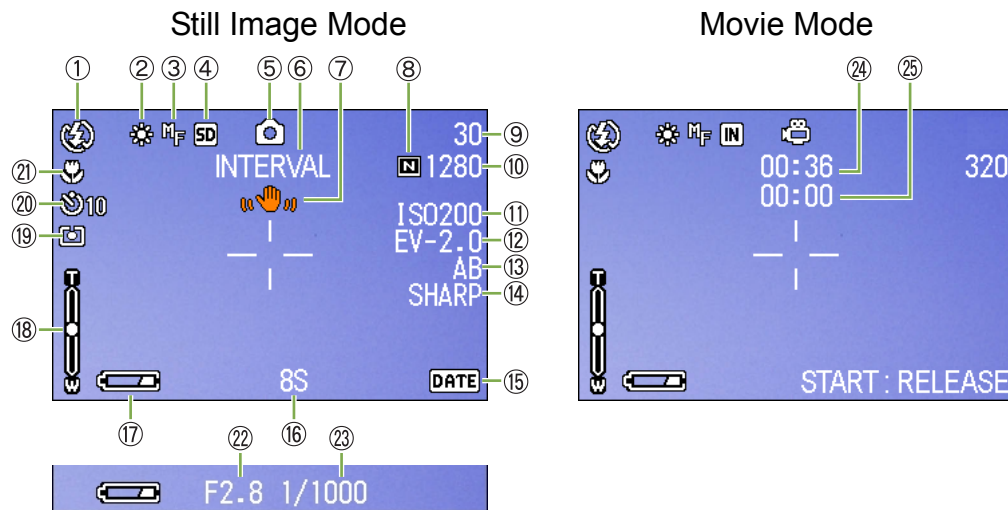
Screen Examples when Shooting Pictures



	Symbol	Display Contents	Refer to
1.Flash	Flash Off	Current flash mode.	p.47
	Auto		
	Red-eye reduction		
	Forced Flash		
	Slow Synchro		
2.WHITE BALANCE	(No Display) AUTO	White Balance set value.	p.52
	Daylight		
	Overcast		
	Tungsten light		
	Fluorescent light		
	One-push		



	Symbol	Display Contents	Refer to
3.FOCUS	(No Display) AF(Auto-Focus)	Focus set value.	p.58
	MF(Manual Focus)		
	Snapshot		
	(Infinite Telephoto)		
4.Recording Destination		Recording to internal memory.	p.15
		Recording to an SD Memory Card.	p.15
5.Flash Mode Types		Still Image Shooting Mode.	p.33
		Movie Mode.	p.42
		Multi-Shot Mode.	p.39
		S Multi-Shot Mode	p.39
		M Multi-Shot Mode	p.39
		PORTRAIT Mode.	p.36
		SPORTS Mode.	p.36
		LANDSCAPE Mode.	p.36
		NIGHTSCAPE Mode.	p.36
		TEXT Mode.	p.36
		HIGH SENSITIVITY Mode.	p.36
	6.INTERVAL	Interval	Interval Shooting.
7.Camera Shake		May be displayed while adjusting focus.	—
8.Picture Quality	Fine	Picture Quality setting.	p.55
	Normal		

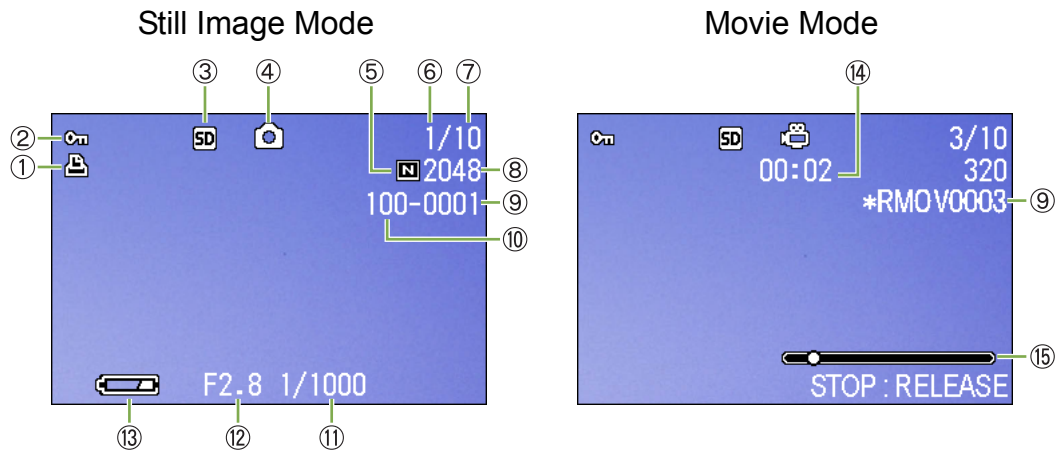


	Symbol	Display Contents	Refer to
9.Remaining Number of Still Images	(Value)	Number of photos that can be taken with the current settings.	—
10.Image Size	(Setting Value)	Image Size setting.	p.55
11.ISO SETTING	(Setting Value)	ISO Speed set value.	p.62
12.EXPOSURE COMP.	(Setting Value)	Exposure compensation set value.	p.50
13.AUTO BRACKET	AB	Auto-Bracket Shooting.	p.64
14.SHARPNESS	SOFT	Sharpness (edge quality) set value.	p.63
	(No display) Standard		
	SHARP		
15.Date/Time	DATE	Date Imprint mode.	p.69
16.TIME EXPOSURE	(Setting Value)	Indicates exposure time.	p.66
17.Battery	Insufficient Capacity	Remaining Battery Power.	—
18.Zoom Bar	-	Zoom status.	p.43
19.PHOTOMETRY	(No Display) Multi	Light Metering Method.	p.60
	Center		
	Spot		
20.Self-timer	10 After 10 Seconds	Self-Timer Shooting.	p.49
	2 After 2 Seconds		
21.Macro Shooting		Macro Shooting.	p.45
22.Aperture Value	-	Aperture size.	—
23.Shutter Speed	-	Shutter speed.	—
24.Remaining Recording Time	(Value)	Length of time remaining for shooting with the current settings.	—
25.Recording Time	(Value)	Amount of time recorded.	—



- When shooting in particularly bright places, it may not be possible to prevent overexposure. In this case, the [IAE] symbol will be displayed.
- The LCD monitor may display messages to inform you of operational instructions or the camera status while in use.

The Screen During Playback



	Symbol	Display Contents	Refer to
1.PRINT		DPOF specified.	p.93
2.PROTECT		Protected status.	p.88
3.Playback data source		Indicates playback from internal memory.	p.78
		Indicates playback from an SD Memory Card.	p.77
4.Mode Types		Still Image Mode.	p.77
		Movie Mode.	p.79
5.Picture Quality	Fine	Picture Quality setting.	p.55
	Normal		
6.Number of Playback Files		The number of the file being played back.	—
7.Total number of files		Total number of files recorded.	—
8.Image Size	(Setting Value)	Image size.	p.55
9.Folder No	-	Number of the folder in which the file is saved.	—
10.File No	-	Number of the file being played back.	—
11.Shutter Speed	-	Shutter speed.	—
12.Aperture Value	-	Aperture size.	—
13.Battery	Insufficient Capacity	Remaining battery level.	p.9
14.Playback Time	(Time)	Movie playback time.	—
15.Indicator		Elapsed time of movie playback.	—

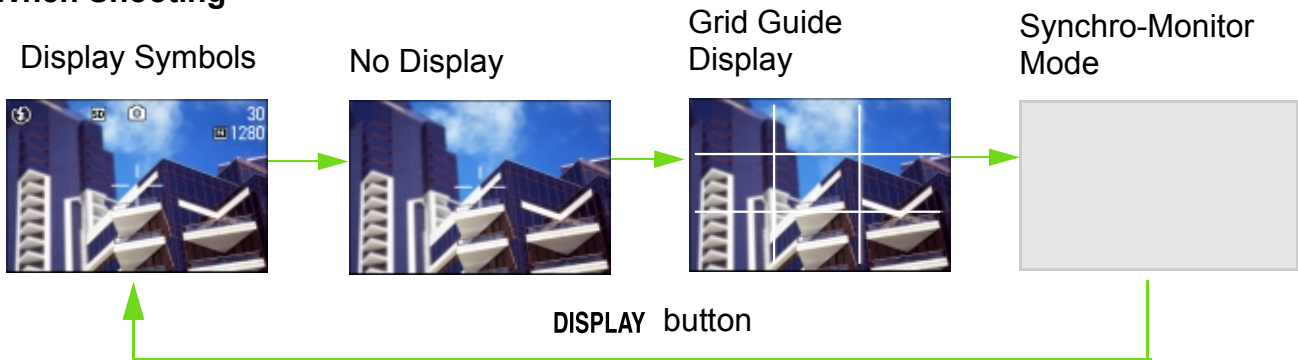


- The LCD monitor may display messages to inform you of operational instructions or the camera status while in use.



Switching the Screen Display




If you press **DISPLAY**, you can change the screen display mode, such as switching between display/no display of symbols, etc.

■When Shooting



AEIn the Synchro-Monitor Mode except with the following operations, the LCD Monitor is turned off (No Display). This is a useful mode to reduce power consumption.

Half-press the shutter release button.	The LCD Monitor is turned on and you can confirm composition. After you finish shooting with Full-Press, the LCD Monitor will automatically turn off.
Press the  (Quick Review) button.	You can view the photo you just took (see p.74). By pressing the  (Quick Review) button again, you can turn the LCD Monitor off.
Press the MENU button.	The LCD Monitor Display is turned on and you can make various settings for shooting (see p.27). By pressing the MENU button again, you can turn the LCD Monitor off.

- You cannot turn the LCD Monitor Display on/off by pressing  (Self-timer),  (Flash) or  (Macro) buttons.
- Turning the LCD Monitor Display Off conserves battery life. In this case, shoot using just the Viewfinder.

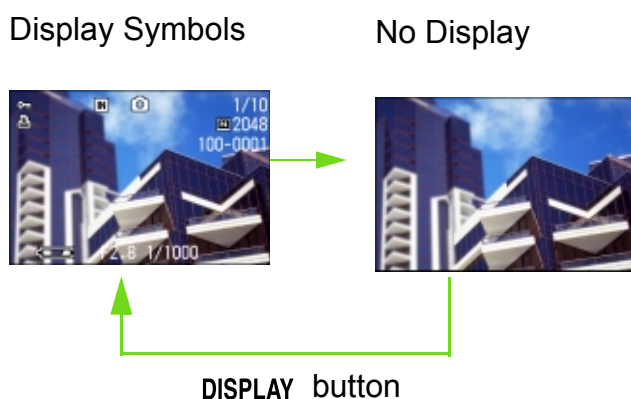


When the No Display or Grid Guide Display is on, symbols will appear for a few seconds right after you have pressed Self-timer, Flash or Macro button.



For how to display the grid guide, see p.71.

■When Playing Back



Button Functions

The following table summarizes the functions of the camera's buttons.



Power Button, see p.13.

Mode Dial, see p.8.

Shutter Release Button, see p.30.

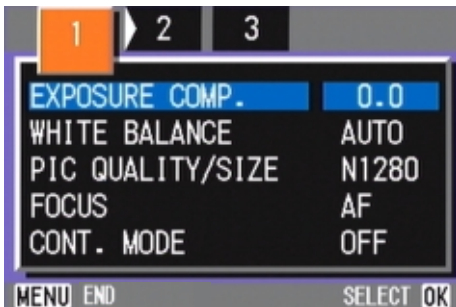
Button	Shooting Mode	Playback Mode	Menu display
(Delete)/ (Self-timer) Button	If you press the button in Shooting Mode, self-timer mode is activated and you can take photos using the self-timer (see p.49).	If you press the button during Playback Mode, you can delete the still image or movie that is displayed on the LCD Monitor (see p.85).	_____
(Flash) Button	Switches between Flash/Flash Off and other Modes (see p.47).	_____	_____
(Macro) Button	You can take close-ups (see p.45).	_____	_____
(Quick Review) Button	The last still image you took is displayed (see p.74).	Displays the previous still image or movie (see p.77).	_____
Button	_____	Displays the next still image or movie (see p.77).	_____
Button	_____	Displays the still image (or movie) on the right, left, above or below in Thumbnail Display mode. (see p.80).	Moves the frame left, right, up and down (see p.27).
(Wide-angle)/ (Thumbnail Display) Button	If you press the button in Shooting Mode, you can shoot with the wide-angle zoom (see p.43).	If you press the button in Playback Mode, the LCD Monitor display is split, allowing you to see sets of still images at one glance (6 images at once) (see p.80).	_____
(Telephoto)/ (Enlarged View) Button	If you press the button in Shooting Mode, you can shoot with the telephoto zoom (see p.43).	If you press the button in Playback Mode, image is displayed on the LCD Monitor up to 3.4 times larger (see p.81).	_____
DISPLAY Button	Switches the display of symbols on the LCD Monitor (see p.21).		
OK Button	This button is used for menu operations (see p.23) displayed on the LCD.		
MENU Button	This button is used for setting the various shooting methods (see p.23), or downloading still images onto your computer (see p.117, p.132).		


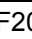
Screens

Default values set when you purchased your camera are surrounded by brackets [] in the selection options.

■ Shooting Menu (Shooting Mode)

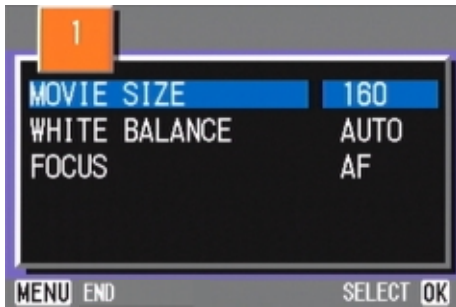
In Shooting Mode, display by pressing the **MENU** button.



Setting	Option	Refer to
EXPOSURE COMP.	-2.0 ~ +2.0	p.50
WHITE BALANCE	[AUTO] / ☀ (Daylight) / ☁ (Overcast) / 🔦 (Tungsten light) /  (Fluorescent light) /  (One Push)	p.52
PIC QUALITY/SIZE	F2048/N2048/F1280/[N1280]/N640	p.55
FOCUS	[AF]/MF/SNAP/∞	p.58
CONT. MODE	[OFF]/CONT/SCONT/MCONT	p.39
PHOTOMETRY	[MULTI]/CENTRE/SPOT	p.60
ISO SETTING	[AUTO]/ISO200/ISO400/ISO800	p.62
SHARPNESS	SHARP/[NORMAL]/SOFT	p.63
AUTO BRACKET	ON/[OFF]	p.64
TIME EXPOSURE	[OFF]/1/2/4/8 seconds	p.66
INTERVAL	_____	p.67
DATE IMPRINT	[Off]/Date/Date and Time	p.69
RESTORE DEFAULTS	_____	p.70

■ Shooting Menu (Movie Mode)

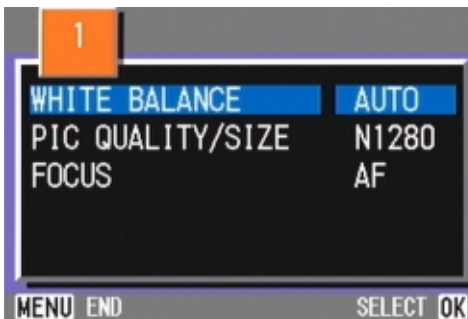
In Movie Mode, display by pressing the **MENU** button.



Setting	Option	Refer to
MOVIE SIZE	[320×240] / 160×120	p.42
WHITE BALANCE	[AUTO] / (Daylight)/ (Overcast)/ (Tungsten light)/ (Fluorescent light)/ (One Push)	p.52
FOCUS	[AF]/MF/SNAP/∞	p.58

■ Shooting Menu (Scene Mode/except in Text Mode)

In Scene Mode, display by pressing the **MENU** button.



Setting	Option	Refer to
WHITE BALANCE	[AUTO] / (Daylight)/ (Overcast)/ (Tungsten light)/ (Fluorescent light)/ (One Push)	p.52
PIC QUALITY/SIZE	F2048/N2048/F1280/[N1280]/N640	p.55
FOCUS	[AF]/SNAP/∞ (except the Landscape Mode)	p.58

■ Shooting Menu (Text Mode)

In Text Mode, display by pressing the **MENU** button.



Setting	Option	Refer to
DENSITY	DEEP/[NORMAL]/LIGHT	p.72

■ Playback Menu

In Playback Mode, display by pressing the **MENU** button.



Setting	Option	Refer to
SLIDE SHOW	ON/[OFF]	p.82
PROTECT	Select/Release 1 FILE/ Select/Release ALL FILES	p.88
PRINT	Select/Release 1 FILE/ Select/Release ALL FILES	p.93
COPY TO CARD	_____	p.92

■scene-selection Screen (Scene Mode)

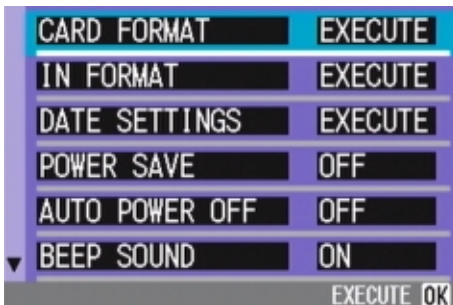
In Scene Mode, the screen is displayed when you select a scene.



Symbol	Setting Content	Refer to
	PORTRAIT	p.36
	SPORTS	p.36
	LANDSCAPE	p.36
	NIGHTSCAPE	p.36
	TEXT MODE	p.36
	HIGH SENSITIVITY	p.36

■Setup Screen (Setup Mode)

This screen is displayed in Setup Mode.



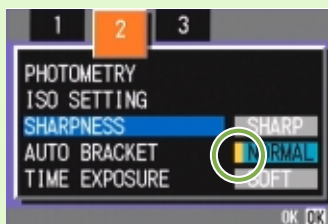
Setting	Option	Refer to
CARD FORMAT	_____	p.97
IN FORMAT	_____	p.98
DATE SETTINGS	_____	p.14
POWER SAVE	ON/[OFF]	p.99
AUTO POWER OFF	OFF/[1]/5/30 Minutes	p.100
BEEP SOUND	[ON]/OFF	p.101
SEQUENTIAL NO.	ON/[OFF]	p.102
IMAGE CONFIRMATION TIME	OFF/[1]/2/3 Seconds	p.103
LCD BRIGHTNESS	_____	p.104
LANGUAGE	JPN/[ENG]/FRE/GER/CHI	p.105
VIDEO OUT MODE	[NTSC]/PAL	p.106

The Basics of the Shooting Menu/Playback Menu

	Operation
To display the menu:	<ol style="list-style-type: none"> 1 Turn the Mode Dial to  (Shooting Mode) or  (Playback Mode). 2 Press the MENU button. The menu appears. On the menu screen, you can move between screens by pressing the   buttons and between items by pressing the   buttons. 
To switch between menu screens (Shooting Menu):	<ol style="list-style-type: none"> 1 Press the   buttons. You can switch the menu screen from [1] to [3].
To select an item:	<ol style="list-style-type: none"> 1 Press the   buttons to select the desired item. 2 Press the OK button.
To select a setting value (shooting menu):	<ol style="list-style-type: none"> 1 Press the   buttons to select the desired item. 2 Press the OK button.
To implement a confirmation screen (shooting menu):	<ol style="list-style-type: none"> 1 Press the  button to select [YES]. 2 Press the OK button.
To select an item you want to implement (playback menu):	<ol style="list-style-type: none"> 1 Press the   buttons to select the item you want to implement. 2 Press the OK button.
To return to the shooting screen/playback screen:	<ol style="list-style-type: none"> 1 Press the MENU button.

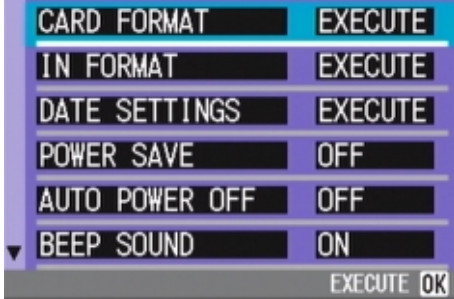


- On the setting selection screen, the item with the orange ■ displayed is the current setting. Even if you change the setting by moving the blue indicator, until you finalize the setting the orange indicator remains to show what the previous setting was.



- The menu screen sequence is slightly different depending on the item for which the setting change is being made. For a detailed explanation of each of the items, see Section 2 or Section 3.

The Basics of the Setup Screen

	Operation
To display the Setup Screen:	<ol style="list-style-type: none"> Turn the Mode Dial to SETUP (Setup Mode). The Setup Screen is displayed. 
To select an item:	<ol style="list-style-type: none"> Press the ▲▼ buttons to select the desired item.
To select a setting value:	<ol style="list-style-type: none"> Press the ◀▶ buttons to select the desired item.
When you have selected [EXECUTE]:	<ol style="list-style-type: none"> Press the OK button. The following screen is displayed, so make the necessary settings.
To close the Setup Screen:	<ol style="list-style-type: none"> Switch the Mode Dial to another mode.

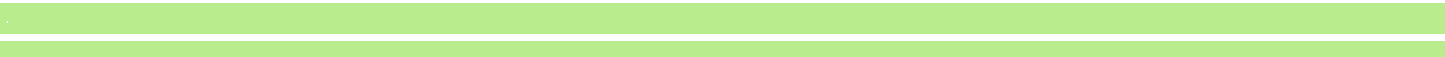


The sequence of operations is slightly different depending on the item for which the setting change is being made. For a detailed explanation of each of the items, see Section 6 .



Section 2 Basic Shooting

The basics of shooting are explained here, from how to hold your camera to how to shoot still images and movies.

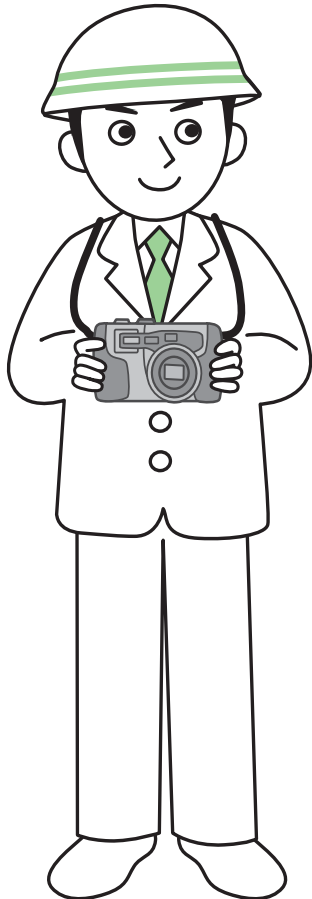


How to Hold the Camera

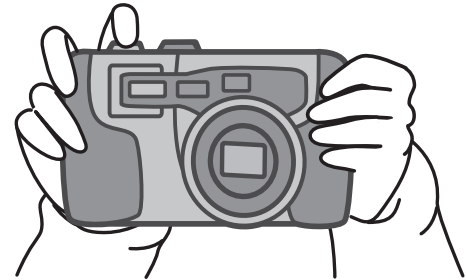
If the camera moves when you press the shutter release button, your still images might not come out clearly (due to camera shake).

Hold the camera as below for best results.

- 1 Hold the camera with both hands and lightly press both elbows against your body.



- 2 Put your finger on the shutter release button



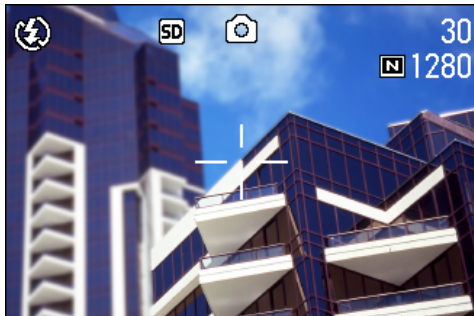
- Be careful when you are shooting not to get a finger, your hair, or the strap in front of the lens or the flash.
- To prevent camera shake, hold the camera securely with both hands when you shoot or use a tripod. Consider using a tripod to prevent camera shake in the following situations:
 - When shooting in a dark place, if you do not use the flash or if you use the Slow Synchro mode.
 - When you shoot with the zoom.

How to Focus

The area displayed on the LCD Monitor is shot as a still image or a movie. When adjusting focus, press the shutter release button halfway (half-press).

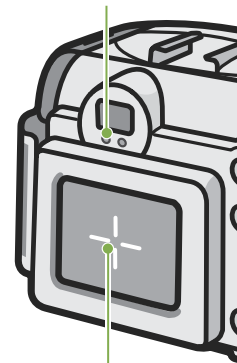
To adjust focus, follow the steps below.

- 1 Point the lens toward the subject you want to shoot.
- 2 Compose the picture on the LCD Monitor.
- 3 The focus is set at the center of the screen, so use the screen to center your subject.



If the camera cannot automatically focus, the crosshairs in the center of the LCD monitor turn red and the auto-focus lamp in the lower left of the viewfinder blinks in green.

Auto focus lamp



Crosshair

- 4 Half-press the shutter release button.

The f-stop (aperture size) and shutter speed are displayed in the bottom part of the screen, and the camera focuses.

Once the shot is in focus, the exposure and white balance are fixed and the crosshair in the center of the LCD Monitor turns green, as does the auto-focus lamp in the lower left of the Viewfinder. Check one of these to make sure the subject is in focus.



	Color of crosshairs	Auto focus lamp	
Before focusing	White	○	Off
Focused	Green	●	On (green)
Failed to focus	Red	⊙	Blink (green)



When the grid appears, the crosshairs do not appear in the middle of the LCD monitor. With the auto focus lamp, check that the shot is in focus.



If the subject is not centered on your composition, see p.35.



- There is another shooting method, which is to fully press the shutter once, without using the half-press method. Full-press shooting is good for capturing the moment. However, you cannot check that your shot is in focus while shooting. (see p.34)
- You can use the battery for a longer period of time by using the viewfinder and shooting in power-save mode (see p.99). In this mode, however, you cannot check the focus on the LCD monitor. Instead, observe the auto focus lamp (in the lower left of the viewfinder), which lights up in green when the shot is in focus.
- The range visible through the viewfinder and that being shot may deviate a little bit, depending on the shooting distance. To check the focus or the shooting range accurately before shooting, please use the LCD monitor.

Shooting Still Images

Use the Shooting Mode to take still images.

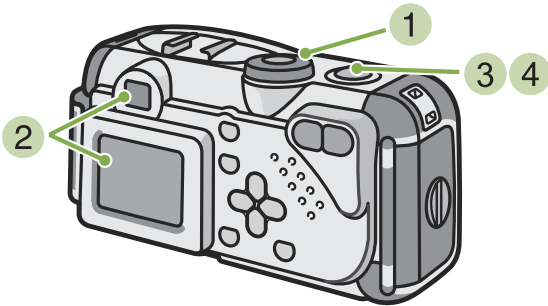
There are two methods of using the shutter release button, pressing the shutter in two stages (half-press) and pressing it all the way down at once (full-press). When you use half-press, you can confirm that your shot is in focus on the LCD Monitor. When you want to capture the moment, full-press is



- For how to shoot with Zoom, see p.43
- For how to shoot Close-ups, see p.45

Check the Focus and Shoot (Half-press)

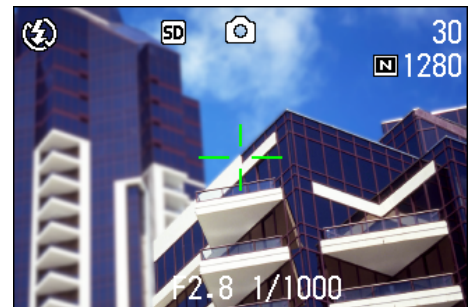
Buttons used here



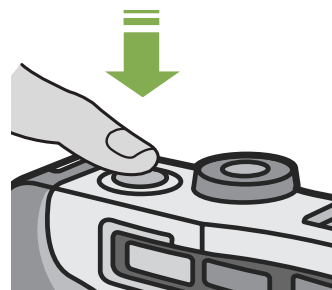
- Put the subject of your photo right in the center and press the shutter release button half-way.

The f-stop (aperture size) and shutter speed are displayed in the bottom part of the screen, and the camera focuses.

Once the shot is in focus, the exposure and white balance are fixed and the crosshair in the center of the LCD Monitor turns green, as does the auto-focus lamp in the lower left of the Viewfinder. Check one of these to make sure the subject is in focus.



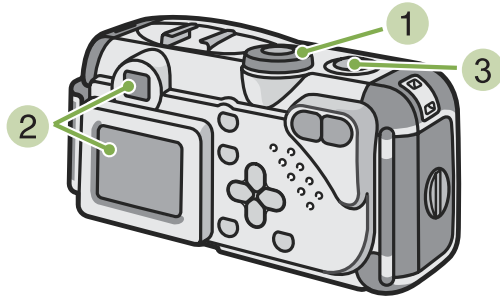
- Gently press the shutter release button all the way.
- The still image you have taken freezes for a moment on the LCD Monitor and is recorded.



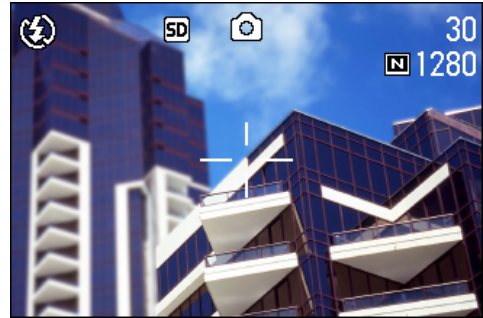
- When the image confirmation time is set to OFF, it is not displayed. See p.103.

Capture the Moment Shooting (Full-press)

Buttons used here



- Put the subject of your photo right in the center and press the shutter release button all the way.



After the camera focuses automatically, the still image is taken and recorded.

- Turn the Mode Dial to (Shooting Mode).
- Compose your shot either by looking through the Viewfinder or at the LCD Monitor.



- Certain subjects are hard to bring into focus:

It may be impossible to bring the following subjects into focus.

- Subjects lacking contrast (the sky, a white wall, the hood of a car, etc.)
- Flat two-dimensional objects with only horizontal lines and no significant protrusions
- Quickly moving objects
- Things in poorly lit places
- Areas with strong backlighting, or reflections
- Things that flicker, such as fluorescent lights

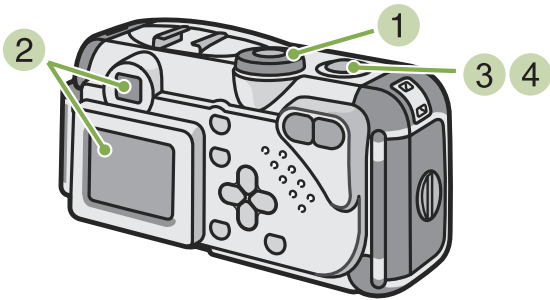
When you want to shoot subjects like this, first focus on an object the same distance as your subject and then shoot. (see p.35)

- When shooting in focus-poor conditions, use the Half-Press method.

When the Subject is not Centered on Your Composition (Focus Lock)

When the subject of your composition is not centered, you can compose your picture after setting the focus and then shoot. This method is called "Focus-Lock."

Buttons used here



- 3 With the shutter half-pressed, compose your shot.



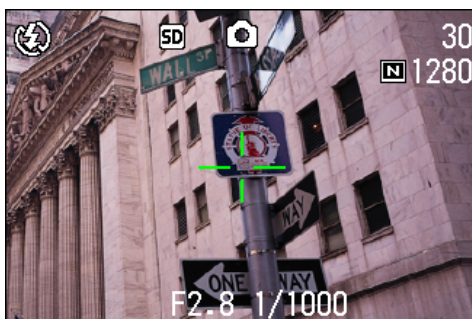
- 4 Gently press the shutter release button all the way.

- 1 Turn the Mode Dial to (Shooting Mode).

- 2 Put the subject of your photo right in the center of the LCD Monitor or the Viewfinder and press the shutter release button half-way.

The f-stop (aperture size) and shutter speed are displayed in the bottom part of the screen, and the camera focuses.

Once the shot is in focus, the exposure and white balance are fixed and the crosshair in the center of the LCD Monitor turns green, as does the auto-focus lamp in the lower left of the Viewfinder. Check one of these to make sure the subject is in focus.



Shooting with Scenery-Matching

If you use the Scene Mode, you can select from among six types of shooting modes and shoot automatically with optimal settings for the scene.

You can select a mode from the following six types, in Scene Mode.

PORTRAIT

This is best for taking pictures of people.



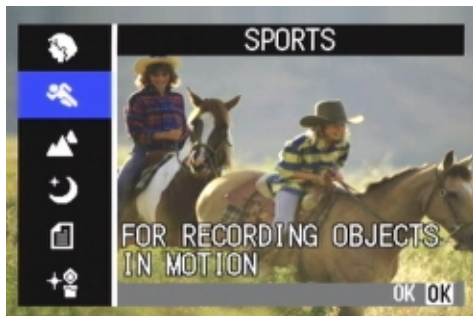
NIGHTSCAPE

Use when shooting night scenes. You can also shoot with people in the frame.



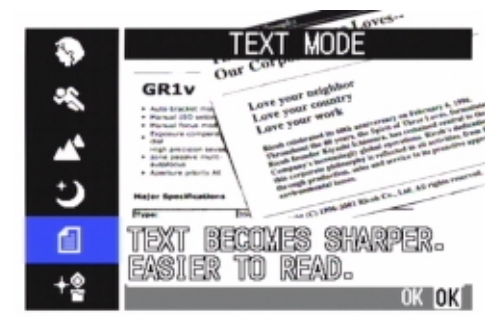
SPORTS

This is best for pictures of moving objects.



TEXT MODE

This is best for black and white subjects like printed documents. These still images are recorded as TIFF format files.



LANDSCAPE

This is best for scenery with a lot of blue sky or greenery.



HIGH SENSITIVITY

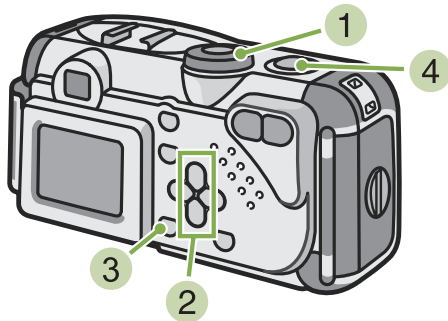
This is best for taking pictures in dimly lit places.



- You can set White Balance while in Scene Mode as well (see p.52), but it may not be possible to get the effect that matches a scene.
- Manual focus cannot be used in Scene Mode.
- In Scene Mode, those pictures displayed in the background of the explanation screen are just for effect.

To select a Scene Mode, follow the steps below.

Buttons used here



- 2 Press the ▲▼ buttons to select the mode you want to use.



- 3 Press the **OK** button.
The camera switches to the Scene Mode shooting screen and the symbol of the Mode you selected is displayed in the top of the screen.




If you press the ► button, the scene-selection screen is displayed and you can change the mode.

If you press **MENU** button, the shooting menu appears.

- 4 Press the shutter release button.



- If you switch the Mode Dial to  (Shooting Mode), you can operate Shooting Mode as usual.
- If you return to Scene Mode again, the scene-selection screen as previously used is displayed.
- In Text Mode, image size cannot be set to 640 × 480 pixels. If a photo is taken with the 640 × 480 setting, the size automatically becomes 1280 × 960 pixels.



- When you want to change PIC QUALITY/SIZE in PORTRAIT/SPORTS/LANDSCAPE/NIGHTSCAPE/HIGH SENSITIVITY Modes, see p.55.
- To make changes to density in TEXT Mode, see p.72.
- To change the focus setting to manual or other, see p.58.
- To make changes to the White Balance settings, see p.52.



TIFF File

This is read "tiff" file. This is a file format for saving image data. The file size is larger than with JPEG (jay-peg) format.

Combination of Scene Mode and Function

Depending on the Scene Mode, the way functions work may differ from when in normal shooting mode. Refer to the table below.

Mode Name	Flash	Macro Shooting
PORTRAIT	Initial setting: Flash Off	Disabled
SPORTS	Initial setting: Flash Off	Disabled
LANDSCAPE	Fixed on Flash Off	Disabled
NIGHTSCAPE	Forced flash is disabled	Disabled
	Initial setting: Auto	
TEXT MODE	Initial setting: Flash Off	Enabled
HIGH SENSITIVITY	Initial setting: Flash Off	Enabled

Shooting with Multi-Shot

If you switch to Multi-Shot, you can shoot consecutive images.

This is convenient when you want to capture the moment.

There are three ways to shoot Multi-Shots, "CONT", "SCONT" and "MCONT".

CONT (Multi-Shot)

As long as you hold the shutter release button down, pictures continue to be taken.

The still images are recorded one file each, just as in normal shooting.



SCONT (S Multi-Shot)

Shoots a continuous stream of images. With just one full-press of the shutter, you can take 16 consecutive shots at 1/7.5 of a second intervals (a span of about two seconds)..

The 16 still images are grouped together as a set and are recorded as one image file.



MCONT (M Multi-Shot)

The camera memorizes the scene while you hold the Shutter Release Button down, and once you release it the previous two seconds of shots are recorded.

The 16 still images are grouped together as a set and are recorded as one image file.



- The maximum number of images that can be shot in Multi-Shot mode depends on the image size and picture quality settings as follows:

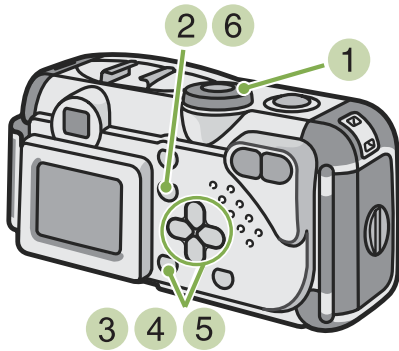
F2048	N2048	F1280	N1280	N640
3	5	6	6	9

- While shooting with Multi-Shot, the LCD Monitor display turns off. Compose your picture and secure it using a tripod, or use the Viewfinder.
- The Picture Quality Mode and the Image Size Mode of SCONT and MCONT are F2048 or N2048.

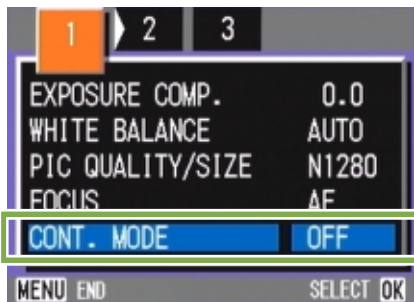
Making Multi-Shot Settings (CONT. MODE)

To make Multi-Shot settings, follow the steps below.

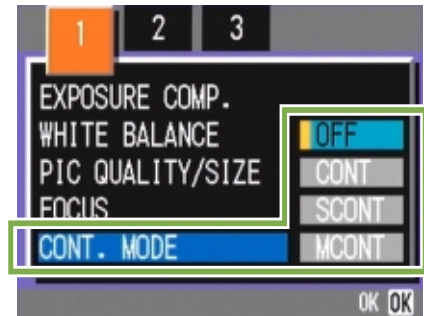
Buttons used here



- 1 Turn the Mode Dial to (Shooting Mode).
- 2 Press the **MENU** button.
The Shooting menu is displayed.
- 3 Select [CONT. MODE] and press the **OK** button.



- 4 Press the **▲▼** buttons to select [CONT], [SCONT], or [MCONT].



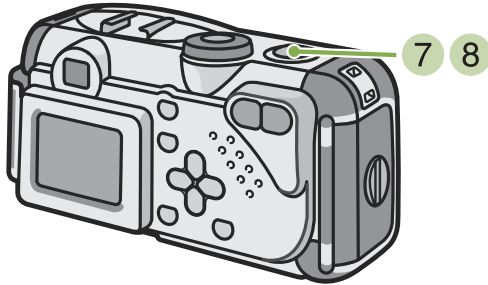
- 5 Press the **OK** button.
- 6 Press the **MENU** button.
The Shooting Menu closes and the symbol is displayed above the screen.



- When you want to return to normal, single-shot shooting, follow steps 1 through 3, select [OFF] in step 4, and press the **OK** button.
- The flash cannot be used.

Shooting with Multi-Shot

Buttons used here

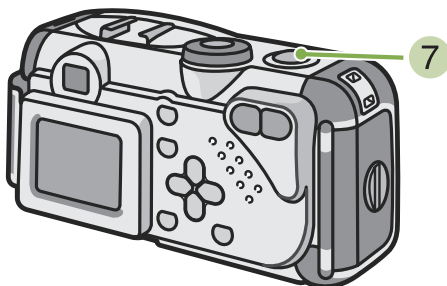


Operation continued from the previous page:

- 7 Compose your picture, then press and hold the shutter release button.
As long as you hold the shutter release button down, pictures continue to be taken.
- 8 As soon as you release the shutter release button, shooting stops.

Shooting with S Multi-Shot

Buttons used here

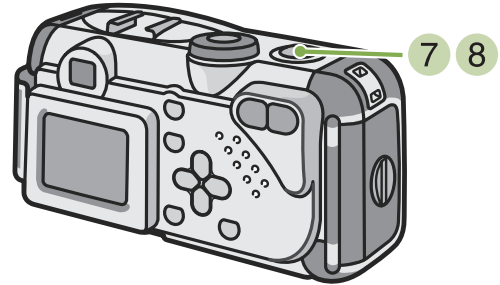


Operation continued from the previous page:

- 7 Compose your picture, then press the shutter release button.
16 pictures are taken automatically.

Shooting with M Multi-Shot

Buttons used here



Operation continued from the previous page:

- 7 Compose your picture, then press and hold the shutter release button.
Storing to memory begins.
- 8 Release your finger from the shutter release button.
The camera takes images in memory from two seconds prior up to release of the shutter release button.



If you release the shutter release button within two seconds from the time you first pressed it, the shots from the time you pressed the shutter until you released it will be recorded (the number of consecutive shots will be less than 16).

Shooting Movies

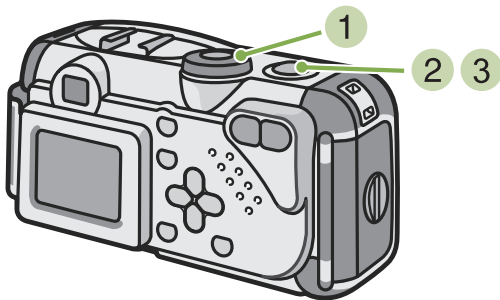
You can shoot movies in Movie Mode.

You can select the image size, either 320 × 240, or 160 × 120 pixels.

The maximum shooting time of each is 30 seconds (320 × 240) and 120 seconds (160 × 120). Each movie you shoot is recorded as one AVI file.

To shoot a movie, follow the steps below.

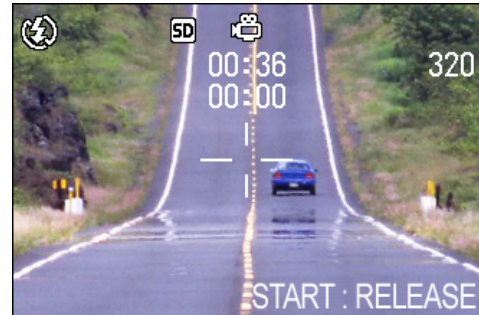
Buttons used here



2 Press the shutter release button.

The camera starts recording.

Recording continues until you press the shutter release button again.



3 Pressing the shutter release button again stops recording.

1 Turn the Mode Dial to (Movie Mode).



- The flash cannot be used.
- While shooting movies, only Digital Zoom can be used.
- At the time you press the shutter release button in Step **2**, the shot comes into focus and the white balance is automatically fixed.



- To change the image size for movies, see p.55.
- For how to use the zoom function, see p.43.
- For how to use the Digital Zoom, see p.44.


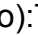



AVI File


This is read "A-V-I" file.

This is a file format used to save movie data.

Shooting with the Zoom

If you use the  (Telephoto):T/  (Wide-angle):W buttons, you can alter the size of the subject in your photo without having to change your distance from the subject. (Equivalent to a 35mm camera's 35 to 105mm zoom.)

By pressing the  (Telephoto) button, the subject you see in the LCD Monitor and the Viewfinder becomes larger.

By pressing the  (Wide-Angle) button, the field in the LCD Monitor and the Viewfinder becomes wider.



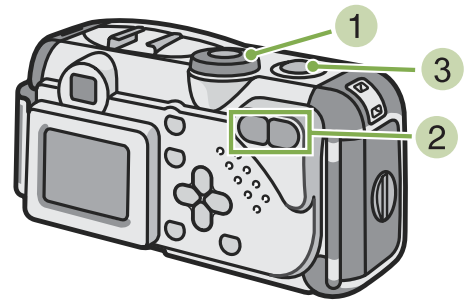
Telephoto Zoom






Wide-angle Zoom

To shoot with the zoom, follow the steps below.

Buttons used here




- 1 Turn the Mode Dial to  (Shooting Mode).
- 2 Compose your picture while viewing either the LCD Monitor or the Viewfinder and zoom by pressing either the  button, or the  button.
A bar is displayed in the LCD Monitor indicating Zoom status.



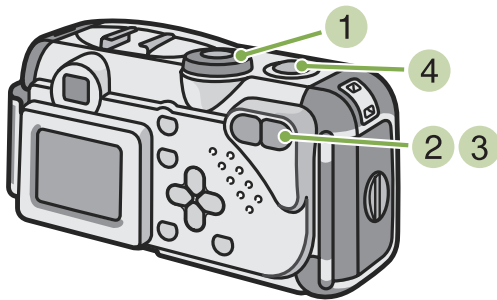
- 3 Press the shutter release button.


Shooting with the Digital Zoom


The Digital Zoom function enlarges images by processing them. When you use the digital zoom, pressing the  (Telephoto) button enlarges the subject even more than the specified enlargement ratio (optical zoom). (Maximum of 3.4 magnification.)

To shoot with the Digital Zoom, follow the steps below.

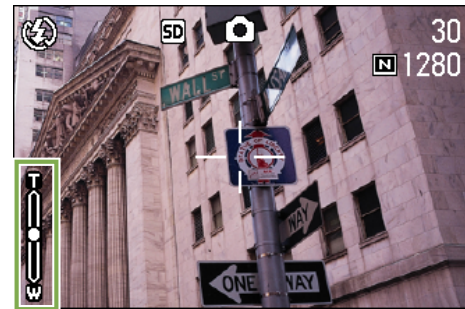
Buttons used here





- 1 Turn the Mode Dial to  (Shooting Mode).

- 2 Zoom in to the maximum by pressing the  button, while viewing through the LCD Monitor.

A bar is displayed in the LCD Monitor indicating Zoom status.




- 3 With the subject image enlarged to the end of the T side (Telephoto) on the Zoom Bar, release the  button once and press  button again and hold down.

The digital zoom is activated and the subject becomes larger.



- 4 Press the shutter release button.




- The more you enlarge with the digital zoom, the lower the picture quality becomes.
- When using the digital zoom, compose your shot on the LCD Monitor.
- If you use the Mode Dial to change modes, the digital zoom setting is lost.
- To release the digital zoom, press the  (Wide-angle) button.
- Digital zoom cannot be used in TEXT MODE.



Optical Zoom

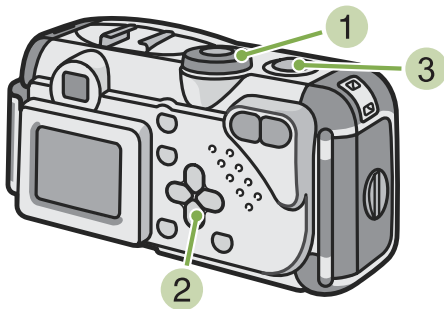
This function enlarges your subject by moving the lens, thus changing the focal length.

Shooting Close-ups (Macro Photo)

If you use the  (Macro) button, you can get up close with the lens and take a photo (Macro Photo). This is good for shooting flowers, insects and other small subjects, because you can get a close-up of one centimeter (1/2 inch) from your subject.

To shoot close-ups, follow the steps below.

Buttons used here




- 2 Press the  (Macro) button.

The Macro symbol is displayed on the left side of the screen.



- 3 Press the shutter release button.


- 1 Turn the Mode Dial to  (Shooting Mode).



- When using the zoom, you can shoot close-ups up to the following distances.

In Wide-Angle (W): Closest 1cm

In Telephoto (T): Closest 16cm

- To get out of Macro Mode, press the  (Macro) button again.
- During Macro Shooting, the Viewfinder cannot be used. Use the LCD Monitor.

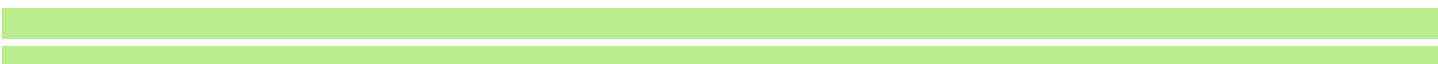


For how to use the Wide-angle Zoom, see p.43.



Section 3 Using Special Features for Improved Photography

This section describes how to change the various shooting-related settings.





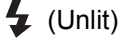


Using the Flash

If you press the ⚡ (Flash) button, you can switch into Flash Mode (Flash, Flash Off, and other settings). Switch settings according to time, conditions and your preference, and shoot your pictures. The light of the flash can reach the following distances: in wide-angle, about 0.2 to 4.5 m, in telephoto, approximately 0.16 to 2.5 m.

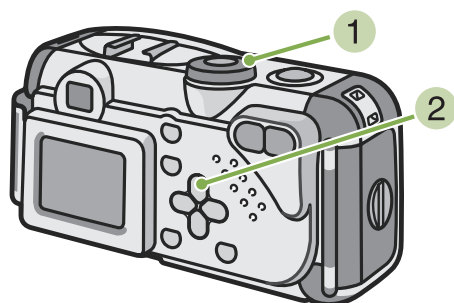
You can check your Flash Mode setting by the symbol displayed on the upper left of the LCD Monitor.

Flash Mode Types

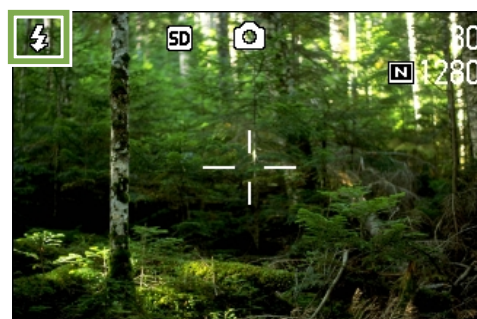
Symbol	Mode Name	Description
	Flash Off	The flash will not fire. Use when shooting where the use of flash is prohibited or when shooting with indoor lighting.
	Auto	When your subject is poorly lit or backlit, the flash fires automatically.
	Red-eye reduction	When shooting images of people, the red-eye phenomenon, in which people's eyes appear red, is reduced.
	Forced Flash	The flash fires, whatever the light conditions are, when you shoot. Use when there is backlighting when shooting outside in daylight.
	Slow Synchro	The flash fires with the shutter speed slowed. Use when shooting images of people against a nightscape.

To switch to Flash Mode, follow the steps below.


Buttons used here



- Pressing the ⚡ (Flash) button switches to Flash Mode.



The flash starts recharging. While the flash is charging, the LCD Monitor goes off and the flash lamp blinks. Once charging is complete, the lamp remains lit and it is possible to shoot.


- Turn the Mode Dial to  (Shooting Mode).
Alternatively, turn the Mode Dial to SCENE (Scene Mode), and select a scene to have the camera ready.




Slow Synchronized

When you shoot pictures in dark places and want to capture background as well, use this mode, which slows shutter speed and sets the flash to Flash Off.

Red-Eye

If you shoot with the flash () in a dark place, people's eyes will appear red. This is called the "red-eye" phenomenon.



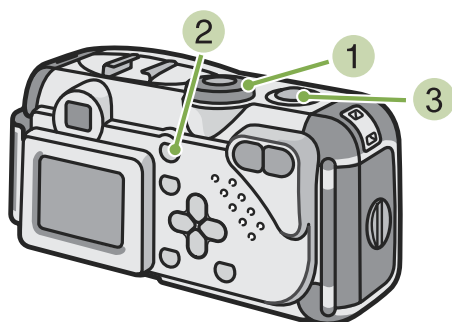
- At purchase your camera is set to Flash Off.
- The settings are saved until you press the  (Flash) button to change them.
- When shooting movies or in Multi-Shot mode, the setting becomes Flash Off.
- When the camera is set to Flash Off or Slow Synchro Mode, the shutter speed is slowed, so the camera is subject to camera shake. Hold the camera firmly with both hands and shoot.
- When in LANDSCAPE of Scene Mode, the flash setting is fixed to Flash Off.
- When in NIGHTSCAPE of Scene Mode, Forced Flash cannot be selected. Also, the initial setting value is Auto.
- If you press the flash button, even while the flash is charging, you can return to Flash Off mode. If you do this, flash charging is cancelled.

Using the Self-Timer

You can set the Self-timer to shoot after either two or ten seconds. If the person who takes the photo wants to be in the still image as well, it is convenient to use a setting of ten seconds; a setting of two seconds is useful for preventing camera shake. Attach a tripod securely to the tripod mount on the bottom of the camera.

To shoot with the Self-timer, follow the steps below.

Buttons used here



1 Turn the Mode Dial to (Shooting Mode).

2 Press the (Self-timer) button.

The self-timer mode is switched on and the Self-timer symbol is displayed.

The "10" to the right of the symbol indicates the number of seconds. In this case, if you press the shutter release button, the camera will shoot after 10 seconds.



3 Press the shutter release button.

The flash begins to blink and the Self-timer starts. After about ten seconds the camera takes the picture. About two seconds before it shoots, the time interval between blinks begins to shorten and the audio tone begins to beep.

After shooting, Self-timer mode switches off.



- Each press of the (Self-timer) button, it selects a function in the following sequence: 10 sec, 2 sec, Self-timer Off, 10 sec, 2 sec...
- Self-timer settings are released when the power is turned off.
- The focus is fixed when the shutter release button is pressed.
- Pressing the (Self-timer) button may clear the display on the LCD monitor in order to recharge the flash.

Changing the Exposure (EXPOSURE COMP.)

The exposure setting allows you to select brightness levels for your shots.

Normally, if your subject is centered, backlight compensation is automatically activated, and you can shoot with correct exposure. However, in the following cases, or when you intentionally want to change the exposure, you can change the exposure setting. Exposure can be specified in the range of -2.0 and +2.0.

For Backlighting

When the background is particularly bright, the subject will be dark (under-exposure).



When your subject is whitish

When you photograph a subject that is mainly white, it will turn out entirely dark, with people appearing dark, and white objects appearing greyish.



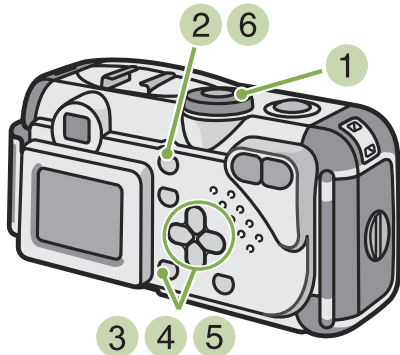
When your subject is darkish

When you photograph a subject that is mainly dark, it will turn out entirely bright (over-exposure), with people appearing white, and black objects appearing greyish. The same happens when you take photos of people in a spotlight.

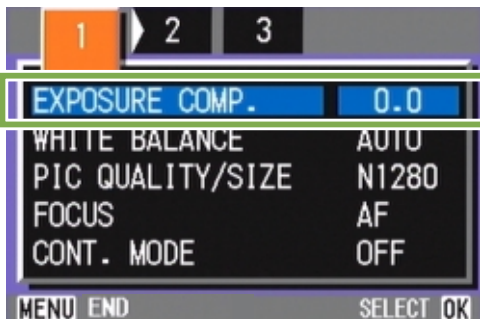


To make changes to exposure settings, follow the steps below.

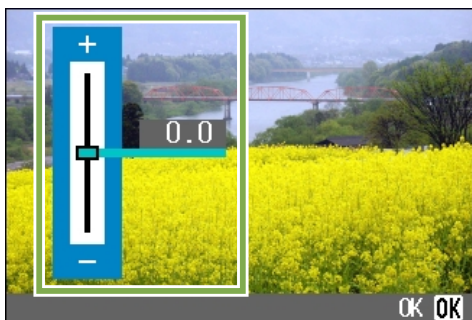
Buttons used here



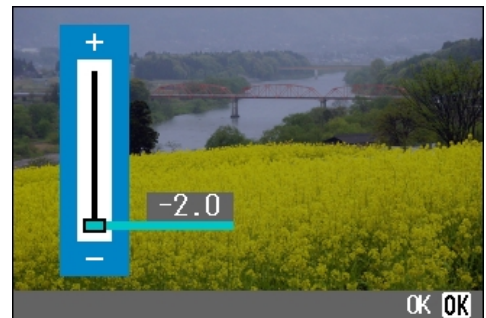
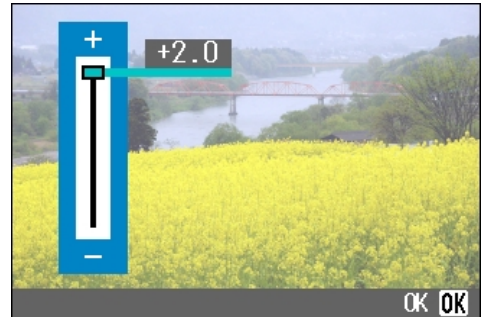
- 1 Turn the Mode Dial to (Shooting Mode).
- 2 Press the **MENU** button.
The Shooting menu appears.
- 3 Select [EXPOSURE COMP.] and then press the **OK** button.



The Exposure Compensation bar appears.



- 4 Press the **▲▼** buttons and specify a value.
Moving it to the - (minus) side makes darker. Moving it to the + (plus) side makes it brighter.



- 5 Press the **OK** button.
Exposure Compensation settings are completed.
- 6 Press the **MENU** button.
The Shooting Menu closes and the setting value appears in the right of the screen.



This setting will be used for shooting until you change it.








- At purchase your camera is set to 0.0. When it is set to 0.0, no value is displayed.
- Under backlighting conditions, if the subject is not centered in the shooting range, the camera does not recognize backlighting conditions. Use EXPOSURE COMP.

Using Natural and Artificial Lighting (WHITE BALANCE)

With a normal camera, a white subject may not be reproduced as white depending on lighting around the subject.

Digital cameras have a function called White Balance, which automatically adjusts white balance so white subjects are reproduced as white. At purchase, the White Balance is set to "AUTO"; normally you do not need to change the setting, but if the camera is having difficulty adjusting, please change the setting.

Types of Modes you can Select

Symbol	Mode Name	Description
AUTO	Auto	Make adjustments automatically.
	Daylight	Select when shooting outdoors (Sunny) and White Balance fails to adjust properly.
	Overcast	Select when shooting in cloudy weather or shade and the White Balance fails to adjust properly.
	Tungsten light	Select when shooting under tungsten light and White Balance fails to adjust properly.
	Fluorescent light	Select when shooting under fluorescent light and White Balance fails to adjust properly.
	One Push	Manually set White Balance.

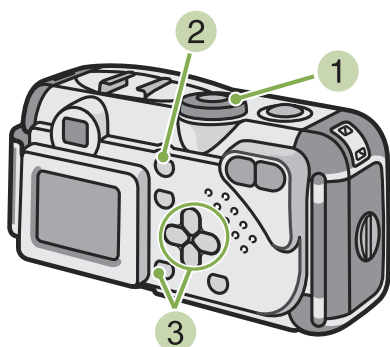


The following subjects may make it difficult for the camera to automatically adjust White Balance:

- Single colored subjects
- Subjects under multiple light sources

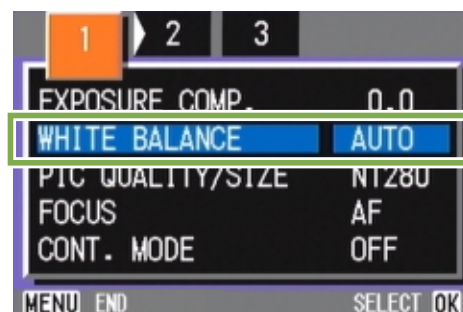
To make White Balance settings, follow the steps below.


Buttons used here




2 Press the **MENU** button.
The Shooting menu (or the Movie menu) appears.




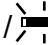
3 Press the **▼** button to select [WHITE BALANCE] and then press the **OK** button.



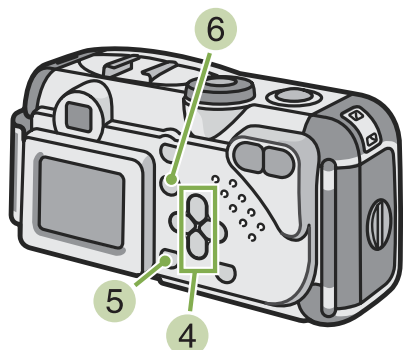
1 Turn the Mode Dial to  (Shooting Mode).

When shooting in Scene Mode, set to SCENE (Scene Mode) and select Shooting Mode.

When shooting movies, set to  (Movie Mode).

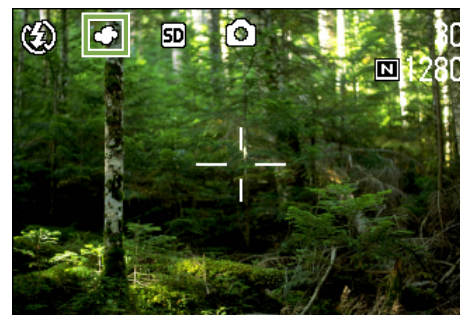
■ If you select AUTO /  /  /  / 

Buttons used here



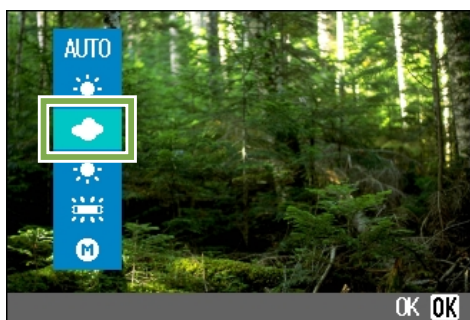
5 Press the **OK** button.
White Balance settings are complete.

6 Press the **MENU** button.
The Shooting Menu closes and the setting value is displayed on the upper left of the screen.



This setting will be used for shooting until you change it.

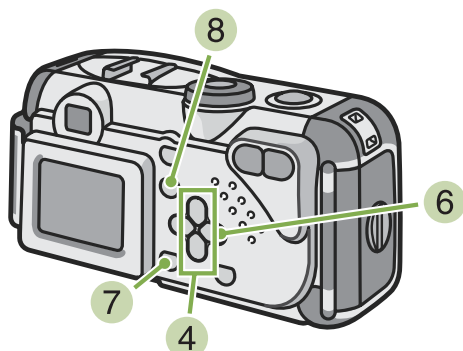
4 Press the **▲ ▼** buttons to select a mode.



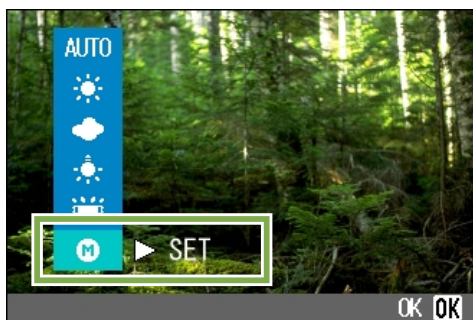
- In Auto Mode, if the subject has limited white area, White Balance may not adjust properly. In this kind of situation add a white object to the composition.
- If you have set the camera to Daylight, Overcast, Tungsten or Fluorescent, the flash is set to Flash Off.

■ If you select **M** (One Push)

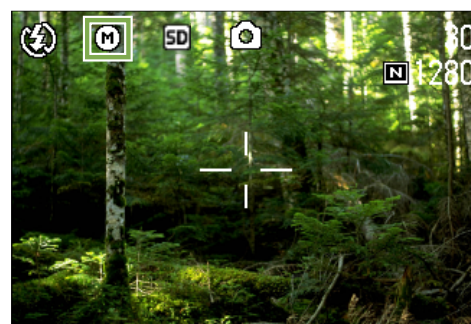
Buttons used here



4 Press **▲▼** to select **M** (One Push).



- 5 Point the camera at a piece of paper or something white under the lighting conditions for your picture.
- 6 Press the **▶** button.
White Balance is set.
- 7 Press the **OK** button.
White Balance settings are complete.
- 8 Press the **MENU** button.
The Shooting Menu closes and the setting value is displayed on the upper left of the screen.



This setting will be used for shooting until you change it.



If you press the **▶** button in step **6**, the screen refreshes showing the White Balance settings made. If the result is not as expected, repeat steps **5** and **6** to change the settings as many times as required.

Choosing Picture Quality Mode/Image Size (PIC QUALITY/SIZE)

The size of stored still image and movie files depends on picture quality and size settings.

About Picture Quality Mode

When still images and movies are saved as image files, the image data is saved in a compressed file.

Picture Quality Mode specifies the compression ratio to use.

In Picture Quality Mode, there are two types, N (Normal) and F (Fine).

Normal Mode

The compression ratio is high, resulting in a small file. Normally, shooting is done in this mode.



Fine Mode

The compression ratio is low, resulting in a large file, but the picture quality is better than in Normal Mode.



About Image Size

Image size relates to how large the image is. A small image is best for sending via email and using in home pages. When printing pictures, choose the larger size to obtain better results.



- Picture quality settings cannot be made for movies.
- Image sizes that can be set differ for still images and movies.



Image Files

Files containing still images and movies are called Image Files.

Saving

Recording data as a file on a medium such as internal memory or SD Memory Card is called "Saving". This is a term generally used in computing when recording on floppy discs or a hard drive.

Changing Picture Quality Mode/ Image Size of a Still Image

Combining Picture Quality Mode and Image Size.

		Size		
		2048×1536	1280×960	640×480
Mode	F (Fine)	F2048	F1280	—
	N (Normal)	N2048	N1280	N640

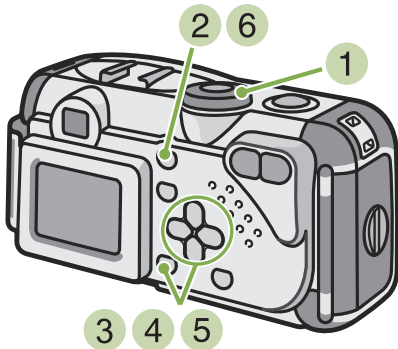
Figures inside the bold frame indicate those shown on the screen.

There is no Fine Mode for 640×480.

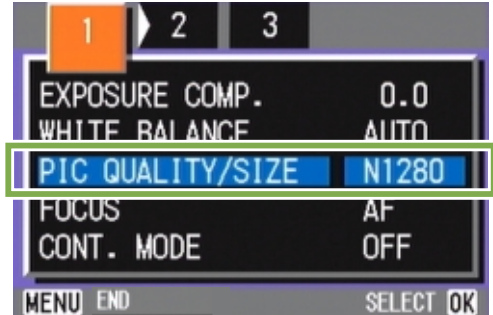
For details, see p.150.

To make changes to Picture Quality Mode/Image Size, follow the steps below.

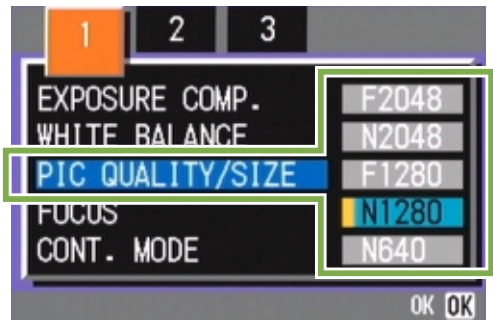
Buttons used here



- 3 Select [PIC QUALITY/SIZE] and then press the **OK** button.



- 4 Press the **▲▼** buttons to select [PIC QUALITY/SIZE].



- 5 Press the **OK** button.
Picture Quality/Image Size settings are completed.
- 6 Press the **MENU** button.
The Shooting Menu closes and the setting value is displayed on the upper-right of the screen.



This setting will be used for shooting until you change it.

- 1 Turn the Mode Dial to **📷** (Shooting Mode).
Alternatively, turn the Mode Dial to **SCENE** (Scene Mode) and select a mode to prepare the camera.
- 2 Press the **MENU** button.
The Shooting menu appears.



- At purchase your camera is set to N1280.
- In Scene Mode with Text Mode selected, the image size is automatically set to 1280.

Changing the Image Size of a Movie

Image Quality Mode settings cannot be made for movies.

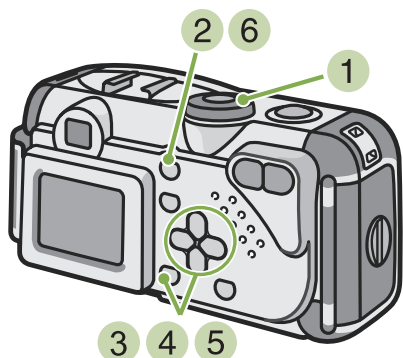
Two Image sizes are available: 320 × 240, and 260 × 120 pixels.




- At purchase, your camera is set to 320 × 240.

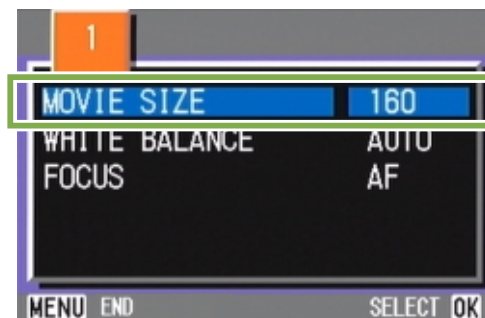
To make changes to Image Size, follow the steps below.

Buttons used here

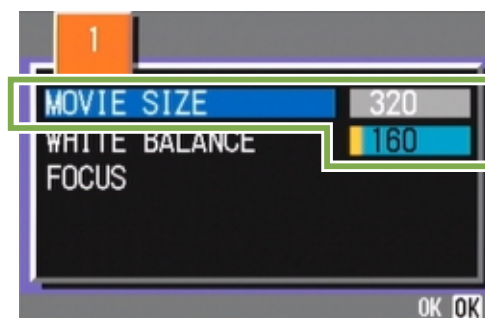


- 1 Turn the Mode Dial to  (Movie Mode).
- 2 Press the **MENU** button.
The Shooting menu appears.

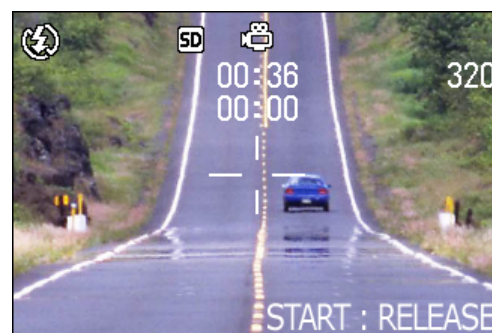
- 3 Select [MOVIE SIZE] and then press the **OK** button.



- 4 Press the **▲▼** buttons to select Size.



- 5 Press the **OK** button.
Movie Size settings are complete.
- 6 Press the **MENU** button.
The Shooting Menu closes and the setting value is displayed on the upper-right of the screen.



This setting will be used for shooting until you change it.

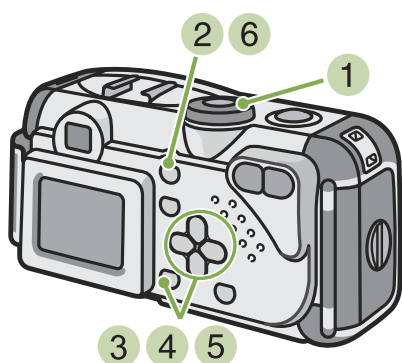
Manual Focus Shooting (FOCUS)

When Auto-Focus does not focus as desired, you can focus manually (Manual Focus). You can also shoot with a fixed shooting distance. When using a fixed shooting distance, it can be set to either Snapshot or Infinity (∞).

Manual Focus Shooting

For Manual Focus Shooting, follow the steps below.

Buttons used here

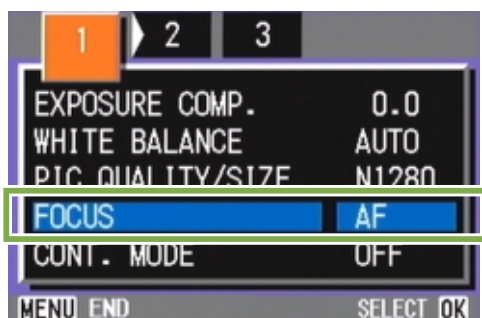


- 1 Turn the Mode Dial to (Shooting Mode).

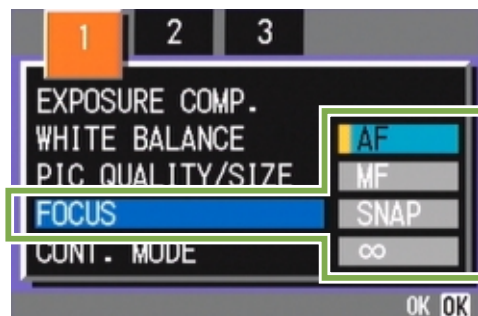
When shooting movies, set to (Movie Mode).

- 2 Press the **MENU** button.
The Shooting menu appears.

- 3 Select [FOCUS] and press the **OK** button.



- 4 Press the **▲▼** buttons to select [MF].



- 5 Press the **OK** button.
Focus settings are complete.

- 6 Press the **MENU** button.
The Shooting Menu closes and "MF" is displayed on the upper part of the screen.



- 7 Press the **◀▶** buttons to focus the camera.
If you press the **◀** button, the focus moves closer.
If you press the **▶** button, the focus moves further away.

Manual Focus is used for shooting until you change the settings.

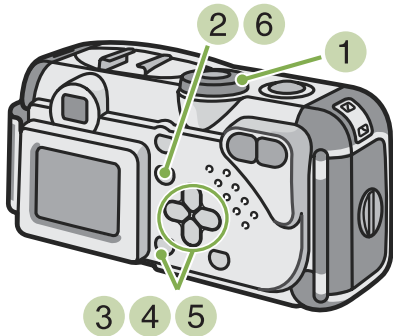


- At purchase your camera is set to AF (Auto-Focus).
- When using Manual Focus, if you press the **OK** button, you can enlarge the central part of the LCD Monitor, which makes it easier to focus. However, it cannot be used for Interval Shooting.
- Manual focus cannot be used in Scene Mode.
- Quick Review (p.74) cannot be used in Manual Focus Mode.

Shooting at a Fixed Distance

To shoot with the shooting distance fixed, follow the steps below.

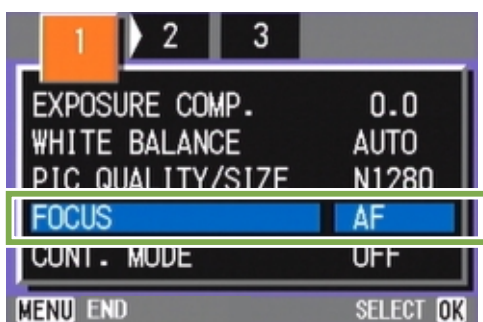
Buttons used here



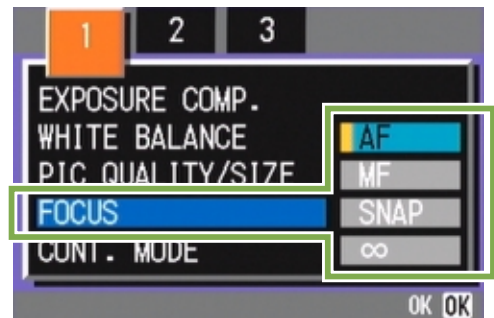
- 1 Turn the Mode Dial to (Shooting Mode).
When shooting in Scene Mode, set to SCENE (Scene Mode) then select a Shooting Mode.

When shooting movies, set to (Movie Mode).

- 2 Press the **MENU** button.
The Shooting menu appears.
- 3 Select [FOCUS] and then press the **OK** button.



- 4 Press the **▲▼** buttons to select [SNAP] or [∞] (Infinity).



- 5 Press the **OK** button.
Focus settings are complete.
- 6 Press the **MENU** button.
The Shooting Menu closes and the specified value is displayed on the upper part of the screen.



This setting will be used for shooting until you change it.



- Selecting [SNAP] will fix the shooting distance to 2.5 meters.
- Selecting [∞] will fix the shooting distance to infinity. This feature is useful to shoot a distant view.

Changing the Light Metering (PHOTOMETRY)

You can change the metering method (the range to use for metering) to determine the exposure value. There are three Light Metering Methods available: MULTI, CENTRE, and SPOT.

MULTI (No Symbol)

The entire shooting range is divided into 256 partitions, and subjected to photometry for overall decision.

At purchase, your camera is set to this method.



CENTER (☒)

The light metering is determined by a measurement of the whole, with the central part emphasized.

Use this when the brightness of the center and surroundings are different.



SPOT (☑)

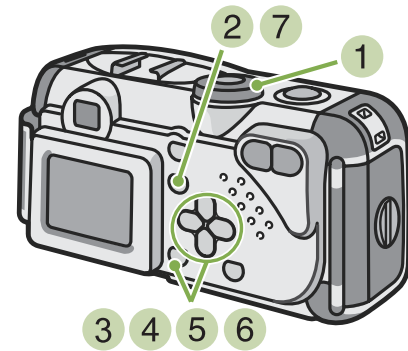
Light metering is determined by measuring only the central part.


Use this setting when you want to use the brightness of the center. It is useful if there is marked difference in contrast or backlighting.

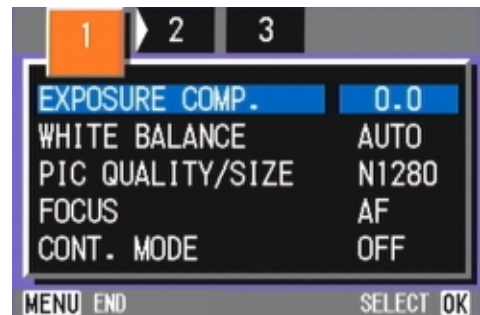




To select light metering method, follow the steps below.

Buttons used here

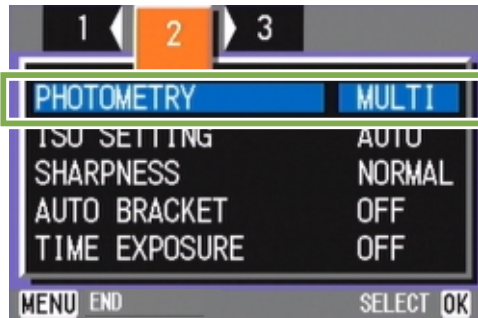


- 1 Turn the Mode Dial to  (Shooting Mode).
- 2 Press the **MENU** button.
The Shooting menu appears.

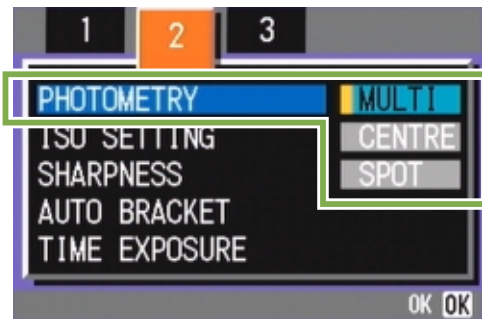


- 3 Press the   buttons to switch between displays as required.

- 4 Select [PHOTOMETRY] and then press the **OK** button.



- 5 Press the **▲▼** buttons to select the desired setting.



- 6 Press the **OK** button.
Light Metering Method setting is complete.

- 7 Press the **MENU** button.
The Shooting Menu closes and the specified value is displayed on the left side of the screen.



This setting will be used for shooting until you change it.



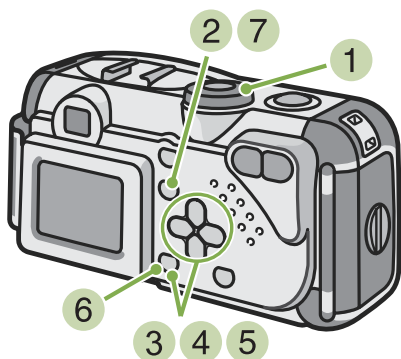
- At purchase, the setting is Multi.

Sensitivity Settings (ISO SETTING)

You can set the sensitivity (ISO SETTING) of your camera according to your preferences. At purchase, the sensitivity is set to Auto. When you want it to be very sensitive, select from among the following three settings: ISO200, ISO400, ISO800.

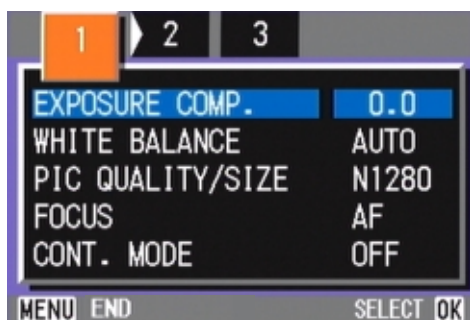
To set sensitivity, follow the steps below.

Buttons used here



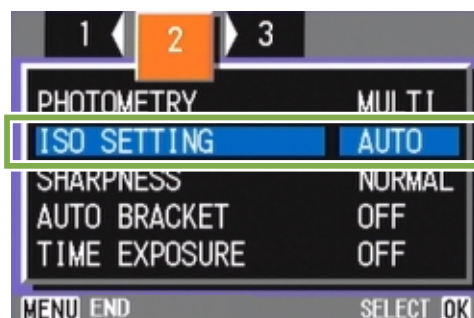
1 Turn the Mode Dial to (Shooting Mode).

2 Press the **MENU** button.
The Shooting menu appears.

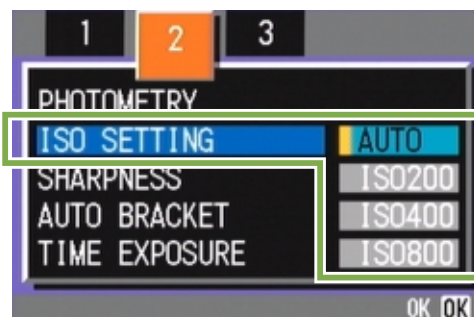


3 Press the **◀▶** buttons to switch between displays as required.

4 Select [ISO SETTING] and then press the **OK** button.

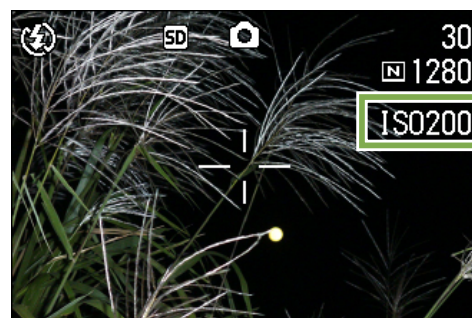


5 Press the **▲▼** buttons to select [ISO SETTING].



6 Press the **OK** button.
ISO settings are completed.

7 Press the **MENU** button.
The Shooting Menu closes and the setting value is displayed on the right of the screen.



This setting will be used for shooting until you change it.



- At purchase, the sensitivity is set to Auto.
- When shooting in a dark place without using the flash, raising the sensitivity enables you to give a subject more brightness.
- If you increase the ISO Sensitivity, it becomes possible to shoot under low light conditions, but your pictures may become grainy. The higher the ISO Sensitivity, the grainier your pictures are likely to become, so it is necessary to exercise caution.

Changing the Edge Quality of Still Images (SHARPNESS)

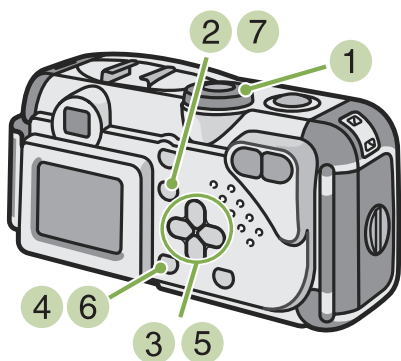
You can change the definition of your still images to either sharp or soft.



At purchase, your camera is set to Normal.

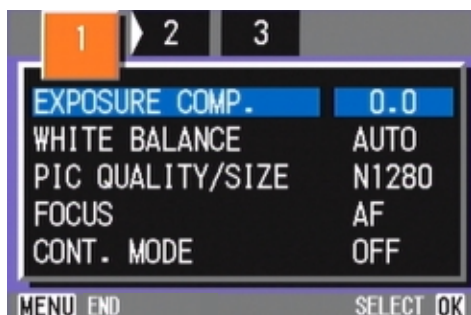
To make changes to the sharpness of still images, follow the steps below.

Buttons used here



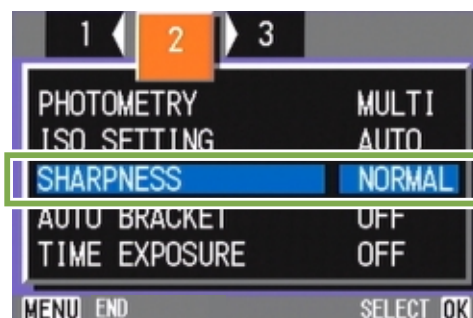
1 Turn the Mode Dial to (Shooting Mode).

2 Press the **MENU** button.
The Shooting menu appears.

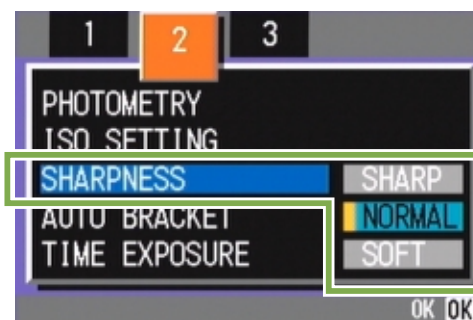


3 Press the **◀▶** buttons to switch between displays as required.

4 Select [SHARPNESS] and then press the **OK** button.



5 Press the **▲▼** buttons to select the desired setting.



6 Press the **OK** button.
Sharpness settings are complete.

7 Press the **MENU** button.
The Shooting Menu closes and the setting value is displayed on the right of the screen.



This setting will be used for shooting until you change it.

Shooting Consecutively with Different Exposures (AUTO BRACKET)

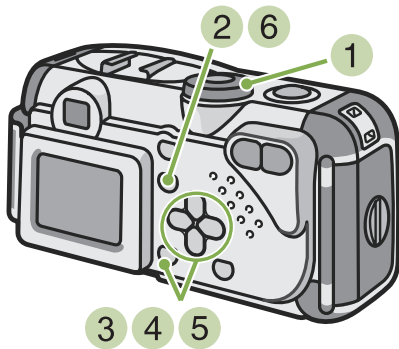
The Auto Bracketing function automatically shoots three consecutive shots, with the specified exposure value as standard, at three exposure levels, at -0.5EV, +/-0, and +0.5EV.



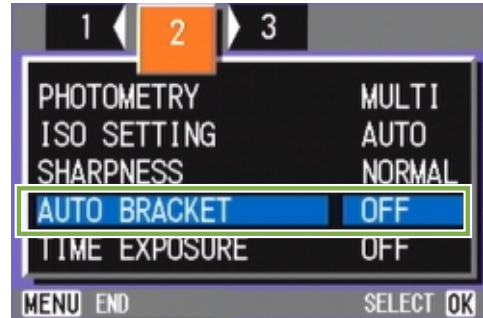
At purchase, this feature is set to OFF.

To shoot with Auto Bracket, follow the steps below.

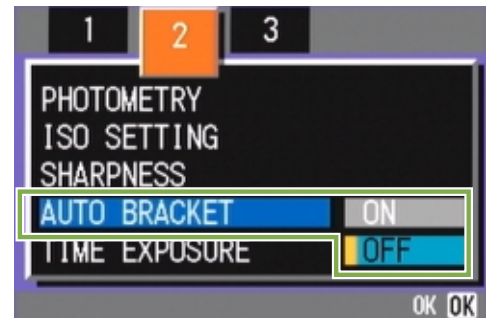
Buttons used here



- 4 Select [AUTO BRACKET] and then press the **OK** button.

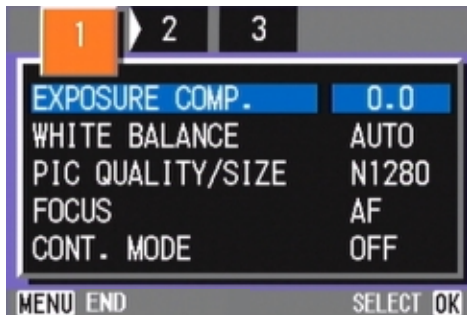


- 5 Select [ON] and then press the **OK** button.



- 1 Turn the Mode Dial to (Shooting Mode).

- 2 Press the **MENU** button.
The Shooting menu appears.



- 3 Press the **◀▶** buttons to switch between displays as required.

- 6 Press the **MENU** button.

The Shooting Menu closes and [AB] is displayed on the left side of the screen.



7 Press the shutter release button.

Three consecutive shots are taken, with the specified Exposure Compensation value as the standard, at -0.5EV, +/-0, and +0.5EV.

After shooting, the three shots are displayed on the LCD Monitor. They are from the left, -0.5EV, the standard compensation value, and +0.5EV.



This setting will be used for shooting until you change it.



- For how to change the Exposure Compensation see p.50.
- For how to change the White Balance see p.52.

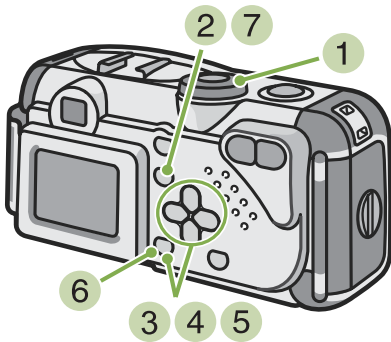
Setting the Exposure Time (TIME EXPOSURE)

If you set the camera to TIME EXPOSURE, when you shoot, the shutter stays open for the time specified.

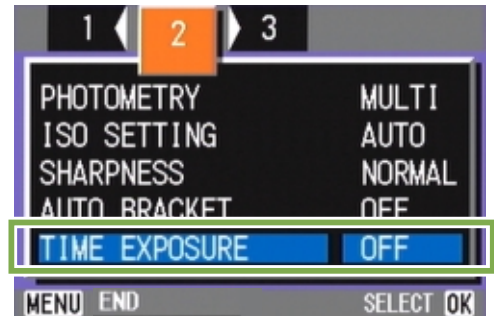
By setting an exposure time, you can capture the track of moving subjects such as fireworks and car lights, when you shoot a night scene. You can select an exposure time of 1, 2, 4 or 8 seconds.

To set the exposure Time, follow the steps below.

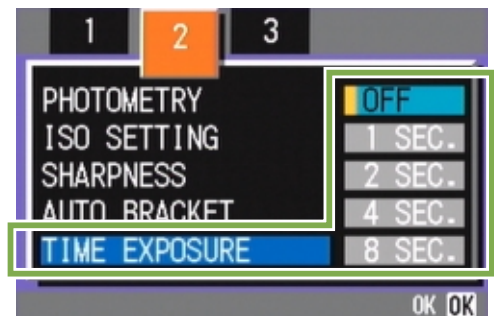
Buttons used here



- 4 Select [TIME EXPOSURE] and then press the **OK** button.

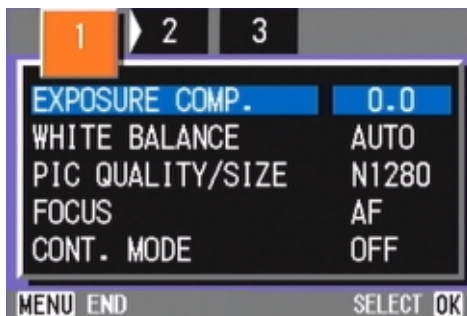


- 5 Press the **▲▼** buttons to select Exposure Time.



- 1 Turn the Mode Dial to (Shooting Mode).

- 2 Press the **MENU** button.
The Shooting menu appears.



- 6 Press the **OK** button.
Exposure Time settings are completed.

- 7 Press the **MENU** button.
The Shooting Menu closes and the specified value is displayed on the bottom of the screen.

- 3 Press the **◀▶** buttons to switch between displays as required.



This setting will be used for shooting until you change it.



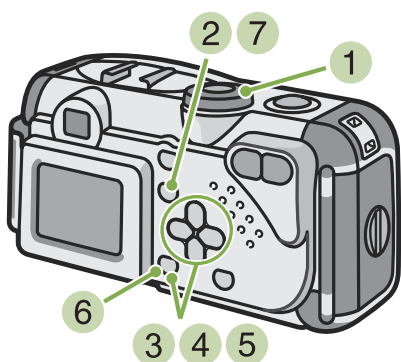
- At purchase, the setting is OFF.
- When the camera is set to Exposure Time, the shutter speed is slowed, so the camera is subject to camera shake. Hold the camera firmly with both hands when you shoot.
- If you set Exposure Time before shooting, the display on the LCD monitor remains cleared during shooting.

Shooting Pictures Automatically at Set Intervals (INTERVAL)

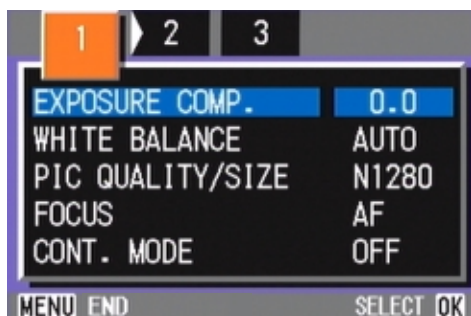
You can set the camera to automatically take pictures at fixed intervals. The interval between shots You can set the shooting interval to 30 seconds to 3 hours in increments of 30 seconds.

For Interval Shooting, follow the steps below.

Buttons used here

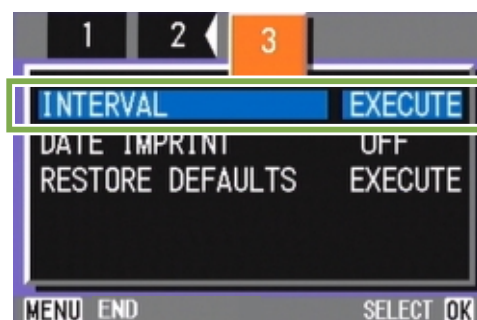


- 1 Turn the Mode Dial to (Shooting Mode).
- 2 Press the **MENU** button.
The Shooting menu appears.

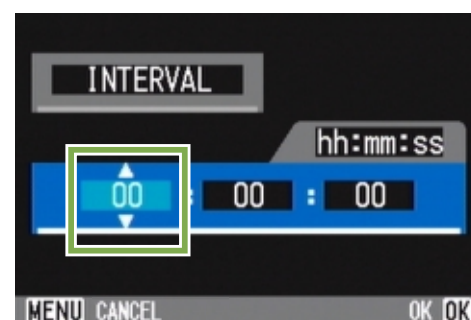


- 3 Press the **◀▶** buttons to switch between displays as required.

- 4 Select **[INTERVAL]** and then press the **OK** button.



- 5 Press the **▲▼** buttons to specify the length of time.



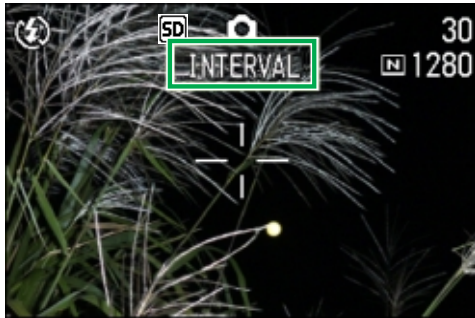
- 6 Press the **▶** button to move to the minutes setting, then use the **▲▼** button to set the minutes.
- 7 Press the **▶** button to move to the seconds setting, then press the **▲▼** buttons to set the seconds.
- 8 Press the **OK** button.
Interval Shooting settings are completed.



When Interval Shooting is on, even when Multi-Shot is set to **[CONT]**, **[MCONT]**, consecutive shooting is automatically switched off.

9 Press the **MENU** button.

The Shooting Menu closes and "Interval" is displayed on the upper part of the screen.



10 Press the shutter release button.

A picture is taken every time the fixed interval elapses.

11 To stop shooting, press the **OK** button.

Interval Shooting settings are cleared when the power is turned off.



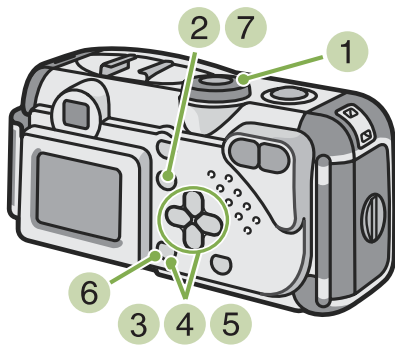
- In steps 5 to 7, if you press and hold the ▲▼ buttons, you can quickly raise or lower the setting value.
- If you use batteries for power, you may exhaust the batteries. Using the AC Adaptor (sold separately) is recommended.
- Even during Interval Shooting, if you press the shutter release button, the camera will shoot as usual. However, Interval Shooting Mode is unaffected. After shooting, once the time specified in Interval Shooting elapses, the next shot is taken.
- Depending on Picture Quality Mode and Flash Mode settings, the shooting interval may become longer than the time set.

Inserting the Date into a Still Image (DATE IMPRINT)

You can stamp the date on the bottom right of your still images. You can choose to display the date in one of two formats, Date (Y/M/D) or Date and Time (Y/M/D/H:M).

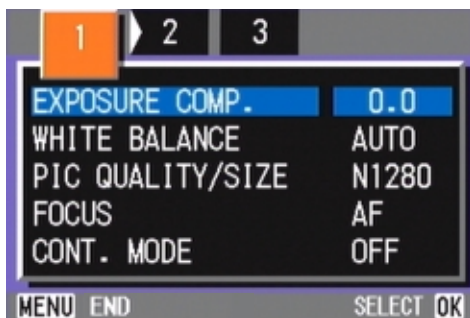
To enter the date or date and time, follow the steps below.

Buttons used here



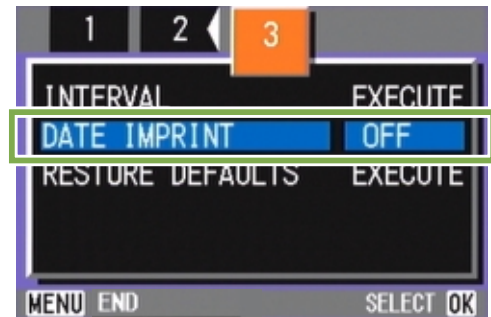
1 Turn the Mode Dial to (Shooting Mode).

2 Press the **MENU** button.
The Shooting menu appears.



3 Press the **◀▶** buttons to switch between displays as required.

4 Press the **▼** button to select [DATE IMPRINT] and then press the **OK** button.



5 Press the **▲▼** buttons to select the desired setting.

6 Press the **OK** button.
The Date Imprint settings are completed.

7 Press the **MENU** button.

The Shooting Menu closes and **DATE** is displayed on the bottom right of the screen.



This setting will be used for shooting until you change it.



- If the date and time have not been set, DATE IMPRINT cannot be used. First make the date and time settings.
- DATE IMPRINT cannot be used with movies.
- If you wish to add a Date Imprint when shooting in TEXT MODE (while in Shooting Mode), make the settings as described above.



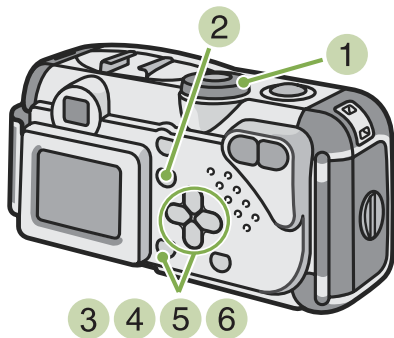
For how to set date and time, see p.14.

Returning the Shooting Menu Settings to their Defaults (RESTORE DEFAULTS)

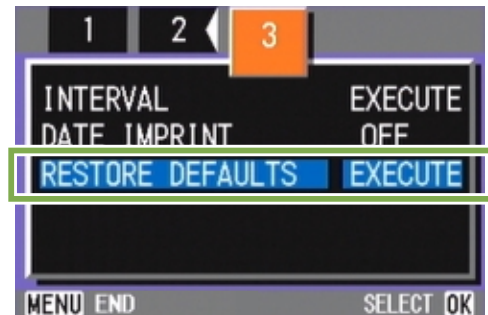
You can restore the Shooting Menu defaults, returning the settings to what they were at the time of purchase.

To restore the Shooting Menu to its initial settings, follow the steps below.

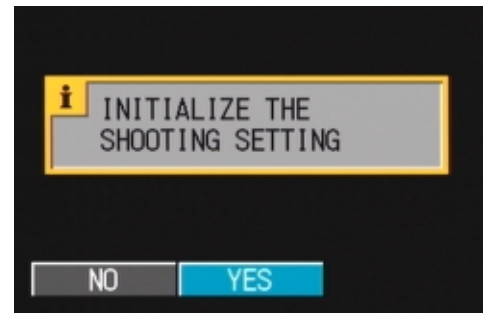
Buttons used here




- Press the ◀▶ buttons to switch between displays as required.
- Select [RESTORE DEFAULTS] and then press the **OK** button.

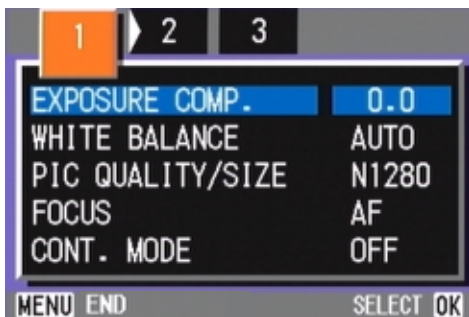


- Press the ▶ button to select [YES].



- Turn the Mode Dial to  (Shooting Mode).

- Press the **MENU** button.
The Shooting Menu appears.



- Press the **OK** button.
The display indicates the camera is restoring the initial settings; once it is finished, you return to the Mode screen.



The default settings are maintained even when the camera is turned off, with the exceptions of Interval Shooting and Auto Bracket settings.

Displaying the Grid Guide on the LCD Monitor

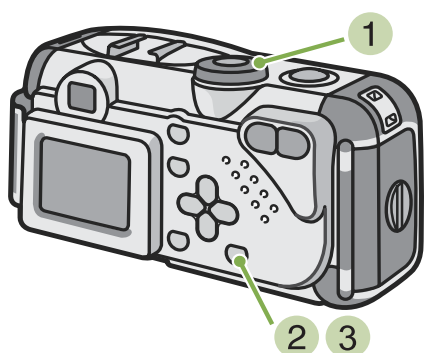
When you want to shoot an image evenly in the vertical or horizontal direction, it is convenient to display the Grid Guide (calibration scale) and make your composition.


The Grid Guide is made of lines that divide the LCD Monitor screen into thirds both vertically and horizontally. The Grid Guide is displayed only as an aid in shooting and is not part of the picture. With the Grid Guide Display on, symbols (see p.20) will be displayed only for a few seconds right after pressing Self-Timer, Flash or Macro buttons.

To display the Grid Guide, follow the steps below.

- 3 Press the **DISPLAY** button.
The Grid Guide appears.

Buttons used here



- 1 Turn the Mode Dial to  (Shooting Mode).

- 2 Press the **DISPLAY** button.
The symbol display disappears.



Every time you press the **DISPLAY** button, the view cycles in the sequence of No Display, Grid Guide, LCD Monitor Off, Normal Symbol Display, No Display.



For how to switch the screen display, see p.21.

Changing Shading for Shooting Text (DENSITY)

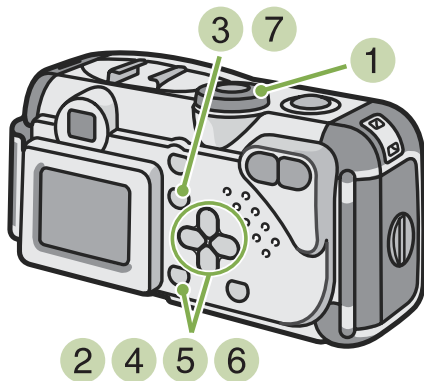
When you are shooting text, you can change the DENSITY settings. You can select from DEEP, NORMAL and LIGHT.



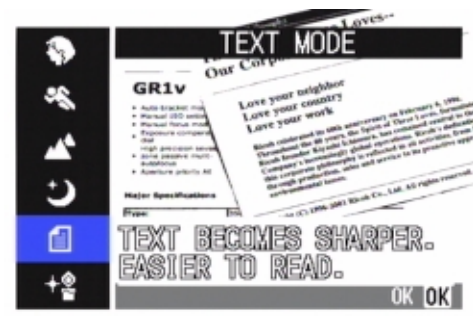
For information on how to shoot text, see p.36.

To make changes to the DENSITY, follow the steps below.

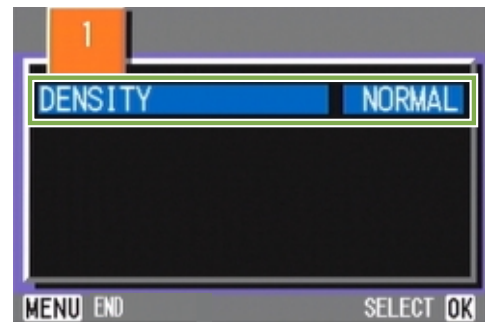
Buttons used here



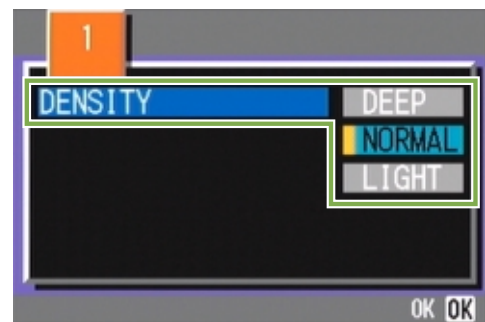
- 1 Turn the Mode Dial to SCENE (Scene Mode).
The scene-selection screen appears.
- 2 Press the ▲▼ buttons to select the text mode and then press the **OK** button.



- 3 Press the **MENU** button.
The Shooting menu appears.
- 4 Select [DENSITY] and then press the **OK** button.



- 5 Press the ▲▼ buttons to select the desired density setting.



- 6 Press the **OK** button.
Density settings are complete.
- 7 Press the **MENU** button.
The display returns to the shooting screen.

The value of the DENSITY settings will not be displayed. This setting will be used for shooting until you change it.



At purchase, the density is set to Normal.