

Caplio R7

RICOH



Higher camera evolution
stimulates your creativity.



Wide-angle 28-200mm optical 7.1x zoom
8.15 effective megapixel CCD

※ All photographs in this brochure except product photos were taken with the Caplio R7.
※ Focal lengths indicated are 35mm film camera equivalents.

28mm WIDE



● F 5.0 1/1230sec ISO100 (28mm)

Introducing a new standard in digital photography: the wide-angle 28-200mm optical zoom lens.

At wide-angle 28mm you get a dynamic view of nature.

At 200mm you can zoom in on each detail.

No matter where you're standing, the Caplio R7's optical 7.1x zoom lens
brings an amazing range of scenes within your reach.

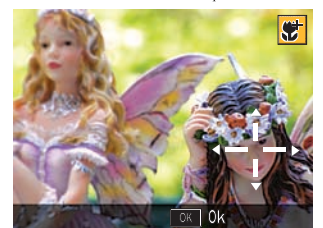
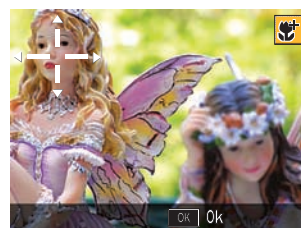


● F 5.2 1/84sec ISO100 (200mm)

Macro photography allows artistic expressions to flourish.

With the lens at its widest angle*, you can shoot your subject from just 1cm away. For more expressive power, draw back to telemacro—you can still get as close as 25cm to your subject. Offering macro shooting at all focal points, the Caplio R7 provides incomparable insights into subjects ranging from flowers and insects to nail art and jewelry. For creative framing you can adjust the focal point freely using AF Target Selection.

* Equivalent to 31mm



※ Simulated images



● F 5.2 1/250sec ISO100 (200mm)

Auto Resize Zoom enables up to 36.2x zoom.

Beyond the optical zoom lens' maximum of 200mm, the Caplio R7 has 4-stage digital zoom that reaches a maximum 36.2x (equivalent to 1010mm*). Images can be resized to 5M, 3M, 1M and VGA. In addition, Automatic Step Zoom enables you to preset 7 optical focal lengths, ranging from close up to wide angle, so you can photograph one subject from many perspectives.

* VGA image size (640 x 480 pixel recorded image)

Optical 7.1x zoom

Auto Resize Zoom



Two vibration correction features assure you of sharp images.

To reduce the incidence of blurred pictures from handshake—a problem that occurs most often in zoom and macro shooting—the Caplio R7 features CCD shift vibration correction. For sharper pictures shot at twilight and in dark rooms, simply set the high sensitivity auto mode to the highest sensitivity, which will give you a faster shutter speed.

Notes: (1) Simulation of the effectiveness of Vibration Correction. Results will vary based on shooting conditions; (2) Vibration Correction is not guaranteed to work in all photographic conditions.



▲ Vibration Correction ON



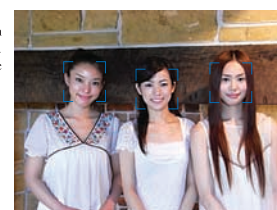
▲ Vibration Correction OFF

Face Recognition Mode.

With Face Recognition Mode on, the Caplio R7 automatically identifies faces in a scene and makes adjustments to achieve optimum focus, exposure and white balance. One result is more beautiful skin tones, especially in women and children. Face Recognition Mode works even when a face is not in the center of the frame or when there are up to four people in the scene.

* Simulated images

Note: Face Recognition Mode is not guaranteed to work in all photographic conditions.



▲ Face Recognition Mode ON

Precious scenes last but a moment. So the Caplio R7 keeps you ready to take your best shot.

● High-speed response prepares you in an instant.

The Caplio R7 needs only about 1.2 seconds to power up*. From focus lock (which is engaged when the shutter button is pressed halfway down)



the shutter release time lag is approximately 0.011seconds*. The camera resets for your next shot in 0.5 seconds*. The fast response time keeps you ready to capture that once-in-a-lifetime shot—even at kids’ sporting events and of pets at play.

*Time measurements with flash and Vibration Correction OFF

● Choose and easily switch between 2 zoom speeds.

Two zoom speeds—high and low—allow you to can give priority to either focusing with greater speed or greater accuracy.

The Caplio R7 introduces innovation in image reproduction.

● Correcting the image brightness and contrast.

With each still picture you shoot, the Caplio R7’s gradation adjustment feature records the image with 5 levels of brightness and contrast, which helps to prevent overexposure and underexposure. The result is a better picture like you intended.

Note: The pre-adjusted image will be preserved.



● Easily rotate vertically oriented pictures 90 degrees for playback.

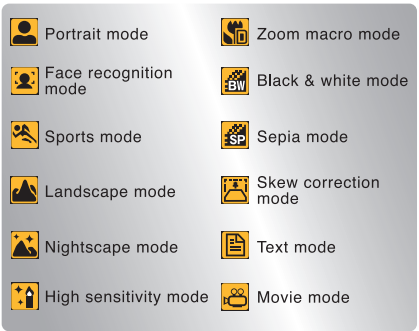
During playback, it’s easy to rotate your vertically oriented still photos 90 degrees to get the right perspective. You can easily save the new orientation for future playback.

Note: Depending on your computer’s application software, images may appear in their original un-rotated form after downloading.

Advanced shooting modes and more add fun as well as ease to your photography.

● Choose from 12 different scene modes.

Depending on the situation, one of the Caplio R7’s 12 scene modes can help you to get the picture you want more easily. Explore, relax and enjoy your photography.



● My Setting offers instant access to your favorite settings

If you have experience in photography, you probably have your favorite shooting settings. The Caplio R7’s My Setting feature lets you save two of your favorite settings, which can be accessed at the push of a button.

● Color bracket records your photos in three tones.

Every picture you take is recorded in three different tones: black and white, color and sepia. Black-and-white photos typically offer a more artistic touch, while sepia offers a retro taste. The Caplio R7 gives you the choice.



● Record images in two sizes for easy posting on websites.

You can set the camera to record pictures at both full size and thumbnail size. This saves you time and effort when you post your pictures on a blog or other Web site.

● PictBridge compatibility.

To print, you can simply connect your camera via USB to a direct-printing compatible printer. In this case, there is no need for a computer.

● Other features.

Shooting

- Long-life rechargeable battery for approximately 300 shots*1
- SDHC memory card
- 24MB internal memory
- Skew Correction function
- High-quality movie capture (VGA, 30fps)
- Three continuous shooting modes: Normal, S-continuous and M-continuous (for the latter two modes, up to 16 images display in a grid on the LCD)
- Enlarged icon display*2

Playback

- Highlight Display function*3
- Batch delete and 10-image skip functions

Solutions

- Ricoh printer compatible form print function*4

*1 Battery performance measured using CIPA standard parameters. Actual performance may vary according to usage conditions.

*2 Not all icons can be enlarged.

*3 Based on Ricoh standards.

*4 For further details, please contact your local Ricoh dealer.



Smooth Imaging Engine III gives new definition to beauty.

Capture richly expressive images that appear as natural as the world around you.
Go further with wide-angle and dynamic zoom photography.
The new Caplio R7—it's all you see and more.



**Large 2.7-inch,
230,000-pixel LCD offers a clear
and accurate view of the images
you've captured.**

The LCD monitor's anti-reflection coating makes images easier to see even under strong sunlight. Offering high contrast and accurate color reproduction, the LCD renders images beautifully. Images appear clear and sharp even viewed at an angle.

※ Simulated images

**8.15 megapixel CCD provides
the image quality for strikingly
beautiful pictures.**

The Caplio R7 introduces the next era of image quality by pairing an 8.15 effective megapixel CCD with a state-of-the-art aspherical lens and high-performance coating technology. Even in small details, your images display rich and natural beauty.



Leading-edge Ricoh technology produces a work of art.

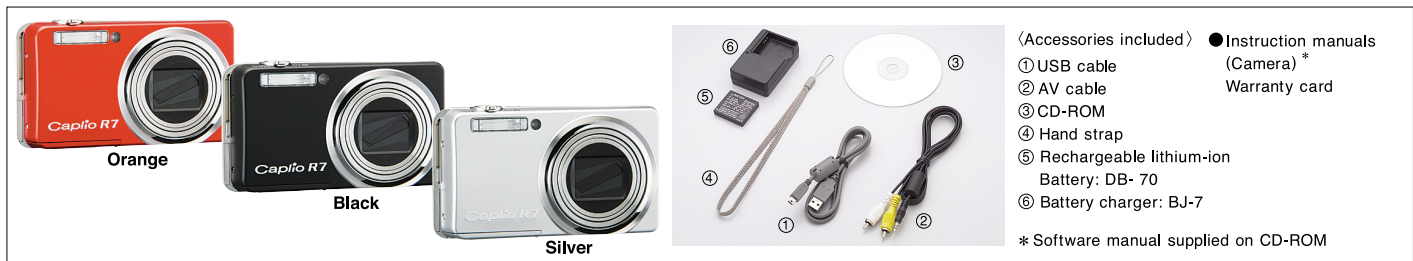
How does a 28mm-200mm zoom lens fit in a slim body of just 20.6mm? Beautifully with Ricoh's original Double Retracting Lens System. At the touch of a button, the 7.1x lens takes you from a breathtaking wide-angle landscape to a dynamic zoom-up. At the second touch of a button, the lens fully retracts, handing you a beautifully slim piece of camera art ready to slip into your pocket.

**Less image noise
in high sensitivity
shooting.**

The superior image processing performance of Ricoh's Smooth Imaging Engine III is revealed most clearly in high sensitivity shooting. Your pictures have less image noise without a sacrifice in resolution. In other words, you get smooth, clear images and sharp lines. In combination with gradation and color tone adjustments, this advanced image processing delivers natural color reproduction. Result? You capture what you see.

► Shot at ISO800,
this fading sunset vividly
illuminates the entire landscape.





Caplio R7 Major Specifications

Item	Description
CCD	Effective 8.15 million pixels (total 8.29 million pixels), 1/2.5-inch primary-color CCD
Lens	Focal length: 14.6-33mm (equivalent to 28-200mm for 35mm cameras. When setting Step Zoom, offers up to seven fixed steps: 28mm, 35mm, 50mm, 85mm, 105mm, 135mm, and 200mm) Aperture (F value): F 3.3 (Wide-angle)-5.2 (Telephoto)
Vibration correction function	CCD shift method
Zoom	Optical 7.1x zoom (equivalent to 28-200mm for 35mm film cameras) Digital zoom: 4.8x, maximum: 34.1x (equivalent to 960mm) in combination with optical zoom. Auto Resize zoom: 5.1x*1, maximum: 36.2x*1 (equivalent to 1010mm) in combination with optical zoom.
Range	From lens tip: approx. 30cm - infinity (Wide), approx. 1.0m - infinity (Telephoto)
Macro range	From lens tip: approx. 1cm - infinity (Wide), approx. 25cm - infinity (Telephoto)
Shutter speed	Still 8, 4, 2, 1-1/2000 sec. Movie 1/30-1/2000 sec.
Resolution	Still 3264 × 2448, 3264 × 2176, 2592 × 1944, 2048 × 1536, 1280 × 960, 640 × 480 Text 3264 × 2448, 2048 × 1536 Movie 640 × 480, 320 × 240
Picture mode*2	Fine, Normal
ISO sensitivity (standard output sensitivity)	AUTO, AUTO-HI, ISO64 / ISO100 / ISO200 / ISO400 / ISO800 / ISO1600
Flash	Flash Off / Auto / Red-eye Flash / Flash On / Flash Synchro / Soft Flash Distance*3 Approx. 20cm-3.0m (W), 25cm-2.0m (T) (ISO auto)
Focus	Multi AF, Spot AF, Manual Focus, Fixed Focus (Snap), infinity (AF auxiliary light)
Exposure adjustment	TTL-CCD metering method: Multi (256 segments), Center Weight, Spot
Exposure compensation	Manual compensation (+2.0 - -2.0 EV in 1/3 EV steps). Auto-bracket (-0.5 EV, ±0.5, +0.5 EV)
White balance	Auto/Fixed (Outdoors, Cloudy, Incandescent Lamp, Incandescent Lamp2, Fluorescent Lamp, manual settings) / White Balance Bracket
Recording media	SD Memory Card™ (32/64/128/256/512MB/1GB/2GB), SDHC Memory Card™ (4GB) Multi Media Card™, internal memory 24MB
Storage capacity*4 (No. of pictures) (Internal 24MB Memory)	Still 3264 × 2448 (Fine: 7, Normal: 13), 3264 × 2176 (Fine: 8), 2592 × 1944 (Normal: 21), 2048 × 1536 (Normal: 31), 1280 × 960 (Normal: 58), 640 × 480 (Normal: 219)
Storage capacity (time)*5 (internal 24MB memory)	Movie 36 seconds (640 × 480: 15 frames/sec.), 70 seconds (320 × 240: 15 frames/sec.), 18 seconds (640 × 480: 30 frames/sec.), 36 seconds (320 × 240: 30 frames/sec.)
Storage data capacity (file sizes)	Still 3264 × 2448 F: 2.90MB/Screen N: 1.67MB/Screen, 3264 × 2176 F: 2.58MB/Screen, 2592 × 1944 N: 1.07MB/Screen, 2048 × 1536 N: 680KB/Screen, 1280 × 960 N: 365KB/Screen, 640 × 480 N: 95KB/Screen (sizes are approximate)
Recording mode	Still mode (Still, Continuous, S-Continuous, M-Continuous) Scene mode (Portrait, Face Recognition, Sports, Landscape, Nightscape, High-sensitivity, Zoom Macro, B&W, Sepia, Skew Correction, Text, Movie) My Setting 1, 2
Recording format	Still JPEG (Exif ver. 2.21) DCF*6 compliant Text JPEG (Exif ver. 2.21) DCF*6 compliant Movie AVI (Open DML Motion JPEG format compliant)
LCD monitor	2.7" transparent amorphous silicon TFT LCD (approx. 230,000 pixels)
Self timer	Delay: 10sec., 2sec.
Interval timer	Shooting interval: 5 sec. - 3 hours (5 sec. steps)*7
Other features	Correct Contrast, Correct Tone, Color Bracket (CL-BKT), Record Dual Size
PC interface	USB2.0 High-speed : Mini B cable, mass storage device compatible*8
AV interface	Audio out, video out
Video signal method	NTSC/PAL
Dimensions (W×H×D)	99.6 (W) × 55.0 (H) × 23.3mm (20.6 at thinnest part) (D) (excluding projections)
Weight	Approx. 135g (without battery, SD memory card, hand strap) Accessories approx. 26g (rechargeable battery, hand strap)
Power source	Rechargeable battery (DB-70) × 1
Shooting capacity*9	Approx. 300 pictures (using DB-70)
Operating temperature	0°C-40°C

- * 1: VGA image size.
- * 2: 3264 × 2176 in Fine only. 2592 × 1944, 2048 × 1536, 1280 × 960, 640 × 480 for Normal only.
- * 3: When flash range is set at ISO auto.
- * 4: Figures are estimates.
- * 5: Movie recording capacity: max. 90 continuous minutes or 4GB single file size.
- * 6: DCF is the abbreviation of JEITA Standard "Design rule for Camera Files system" (It does not guarantee perfect inter-camera compatibility).
- * 7: With flash off.
- * 8: Mass storage driver is compatible with Windows Me/2000/XP/Vista, Mac OS9.0-9.2.2 and Mac OSX 10.1.2-10.4.9. It is not compatible with Windows 98SE.
- * 9: Shooting capacity was measured using CIPA-standard parameters. This is only an estimate. Performance may vary according to usage conditions.

Caplio R7 Optional Accessories

Name
Rechargeable lithium-ion battery: DB-70
Battery charger: BJ-7
Soft case (black): SC-70
Soft case (red): SC-70R*1

*1: Please ask about availability.

Caplio R7 Software

	Windows Vista	Windows XP	Windows 2000/Me
1. RICOH Gate La	○	○	○
2. Irodio Photo & Video Studio	○	○	○
3. Acrobat Reader	○	○	○
4. Desk Top Binder Lite	×	○	○

Caplio R7 System Requirements

	Windows
Operating system	Windows 2000 Professional Windows Me Windows XP Home Edition / Professional Windows Vista
CPU	Windows 2000 / Me / XP: Pentium III 500MHz or faster, Windows Vista: Pentium III 1GHz or faster
Memory	Windows 2000 / Me / XP: 256MB or more Windows Vista: 512MB or more
Hard space (for installation)	160MB or more
Display resolution	1024 × 768 pixels or greater
Display colors	65,000 colors or greater
CD-ROM drive	A CD-ROM drive compatible with the above-mentioned computer
USB port	A USB port compatible with the above-mentioned computer

- * Only USB connection is available when connecting Caplio R7 to a PC. Serial connection is unavailable.
- * Valid for systems with preinstalled OS and USB port.
- * Caplio R7 is compatible with Mac OS 9.0 to 9.2.2 and Mac OS X 10.1.2 to 10.4.9 by mass storage connection.

SD Memory Card Storage Capacity (Number of Images and Time)

Mode	Picture mode	Recording pixels	Built-in memory	64MB	128MB	256MB	512MB	1GB	2GB	4GB
Still	Fine	3264 × 2448	7 images	19 images	39 images	78 images	157 images	303 images	614 images	1206 images
	Normal	3264 × 2448	13 images	33 images	68 images	135 images	273 images	525 images	1059 images	2080 images
	Fine	3264 × 2176	8 images	21 images	44 images	88 images	177 images	341 images	690 images	1356 images
Text	Normal	2592 × 1944	21 images	53 images	107 images	213 images	430 images	828 images	1661 images	3261 images
	Normal	2048 × 1536	31 images	81 images	165 images	331 images	667 images	1285 images	2560 images	5027 images
	Normal	1280 × 960	58 images	147 images	300 images	599 images	1208 images	2323 images	4726 images	9282 images
Movie	640 × 480 (15 frames/sec.)	00'36"	1'31"	3'04"	6'07"	12'19"	23'42"	48'13"	99'08"	
	640 × 480 (30 frames/sec.)	00'18"	00'46"	1'33"	3'05"	6'14"	11'59"	24'23"	50'10"	
	320 × 240 (15 frames/sec.)	1'10"	2'58"	5'59"	11'57"	24'05"	46'19"	94'11"	193'41"	
	320 × 240 (30 frames/sec.)	00'36"	1'31"	3'04"	6'07"	12'19"	23'42"	48'13"	99'08"	

- * Number of recordable pictures and recordable time may vary according to the brand of SD memory card and shooting conditions.
- * Figures and times are averages.
- * Movie recording capacity: max. 90 continuous minutes or 4GB single file size.

For more information, visit:

http://www.ricoh.com/r_dc

RICOH

RICOH COMPANY, LTD.

3-2-3, Shin-yokohama
Kohoku-ku, Yokohama-shi 222-8530, Japan
Phone: 045-477-1738 Fax: 045-477-1797 http://www.ricoh.com/r_dc

RICOH INTERNATIONAL B.V.

Oberrather Straße 6, D-40472
Düsseldorf, Germany
Phone: 0211-6546-0 Fax: 0211-6546-308 <http://www.ricohpmmc.com>

RICOH UK LTD. (PMMC UK)

Ricoh House, 1 Plane Tree Crescent, Feltham,
Middlesex, TW13 7HG, England
Phone: 0208-261-4000 Fax: 0208-261-4288

RICOH FRANCE S.A.S. (PMMC FRANCE)

383, Avenue du Général de Gaulle - BP 307-931-13
Clamart Cédex, France
Phone: 01-4094-3267 Fax: 01-4094-3276

RICOH ESPANA, S.A. (PMMC SPAIN)

Av. Litoral Mar, 12-14, 08005
Barcelona, Spain
Phone: 093-295-7600 Fax: 093-295-7605

RICOH ITALIA S.p.A. (PMMC ITALY)

via Ponchielli, 3
20063 Cernusco S/N Milano, Italy
Phone: +39-02-92361217 Fax: +39-02-92361244

RICOH ASIA PACIFIC OPERATIONS LIMITED

Personal Multimedia Products Center
21/F, One Kowloon, 1 Wang Yuen Street, Kowloon Bay, Hong Kong
Phone: 2862-2888 Fax: 2566-3647/2866-1120

