

RICOH

CX5

Firmware Update Instruction Manual

This manual describes the procedures for downloading the CX5 firmware from the Ricoh website and updating the firmware.

Perform the following procedures to update the firmware.

Flow of procedures

1. Check the current version of the firmware (p. 2)

2. Download the firmware file (p. 2)

3. Copy the firmware to an SD memory card (p. 3)

4. Update the firmware (p. 6)

Making preparations

Things that are needed



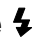

- Camera body
- Charged batteries (inserted into the camera body)
- SD memory card (with approx. 8MB of space available and that has been formatted using the camera)
- Computer
- Accompanying USB cable or a card reader/writer

Formatting the SD memory card



Caution

If a card storing images is formatted, all data on the card will be lost. Save needed images to a computer in advance before formatting the card.






1. Insert the SD memory card into the camera, and turn on the camera
2. Press the MENU button
3. Push the ADJ./OK button toward the  side and then  side to display the Setup Menu
4. Push the ADJ./OK button toward the  side to select [Format [Card]] from the menu, and push the ADJ./OK button toward the  side
5. Select [Yes], and press the Fn button

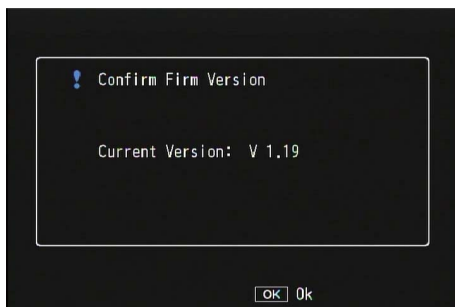
1. Check the version of the firmware

Caution

Before updating, check the firmware version using the following method.

For information about firmware, visit the Ricoh website (http://www.ricoh.com/r_dc/support/).

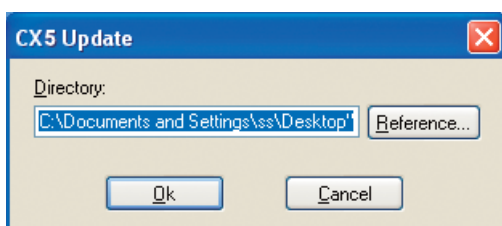
1. Turn on the camera
2. Press the MENU button
3. Push the ADJ./OK button toward the  side and then  side to display the Setup Menu
4. Push the ADJ./OK button toward the  side and then  side to select [Confirm Firmware Version], and push the ADJ./OK button toward the  side
5. Check the firmware version displayed on the picture monitor
 - When the current version of the firmware is V1.19, the version will be shown as [V1.19]:



- There is no need to update the firmware if the version displayed and the firmware version given on the Ricoh website are the same.

2. Download the firmware file

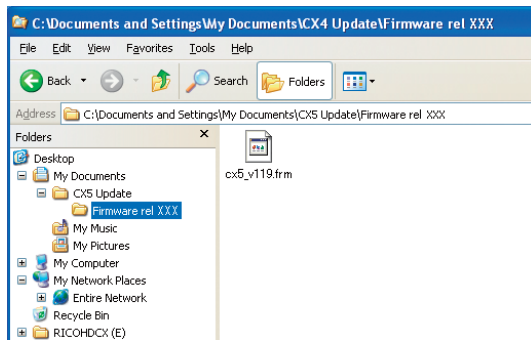
1. Download the firmware to your computer from the Ricoh website
 2. Either doubleclick the downloaded file or click [OK] when the dialog box (refer to the below diagram)
- For Windows, designate the destination for the extracted file, and click [OK].



- For Macintosh, the extracted folder will appear on the desktop.

- 3. A CX5 Update folder will be created, and the firmware file, cx5_v119.frm, will be extracted to the [Firmware relxxx] (xxx is the version number) folder**

Windows



Macintosh



3. Copy the firmware to the SD memory card

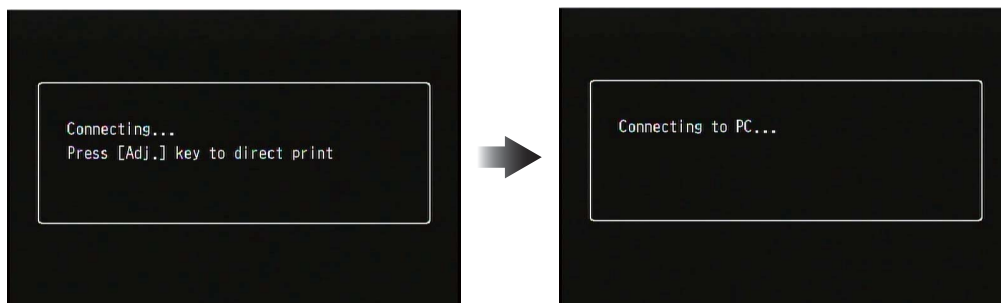
You have two options below:

- ① Connecting the camera to the computer to copy the firmware (refer to p. 3)
- ② Using the card reader/memory card slot to copy the firmware (refer to p. 5)

① Connecting the camera to the computer to copy the firmware

- 1. Insert an SD memory card into the camera**
- 2. Confirm the camera is off, then connect the camera and the computer together using the supplied USB cable**

- The camera will turn on automatically. If the power does not turn on automatically, press the POWER button on the camera to turn the power on.
- Once the power is turned on, the picture display on the camera will display [Waiting to be connected...], and then, the display will show [Connecting to PC...] after a short while.

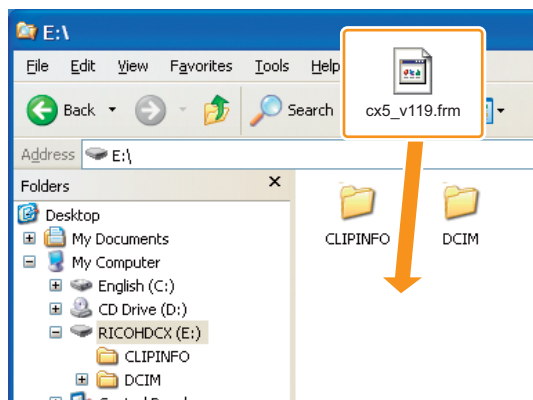


- When the DC Software2 is installed in Windows, the DL-10 may start up automatically. If it does, close out the DL-10.
- If a [Removable Disk] dialog box displays in Windows XP/Windows Vista/Windows 7, please click the [Cancel] button.
- If iPhoto starts up in Mac OS X, close out iPhoto.

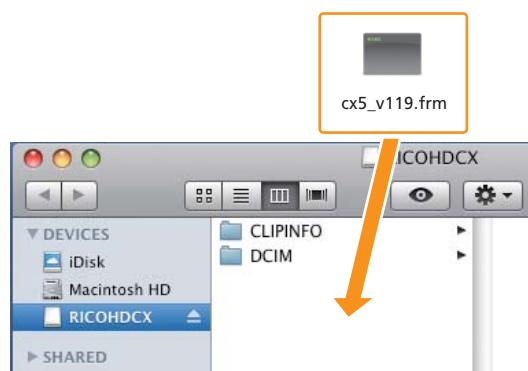
3. Copy the [cx5_v119.frm] file to the SD memory card

- The file name is “cx5_v119.frm” when the firmware version is V1.19.

Windows



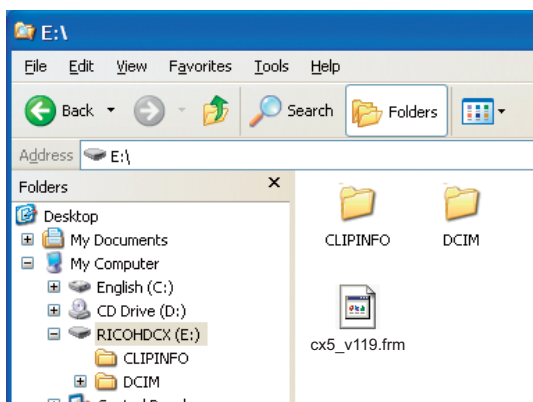
Macintosh



- The name of the drive for the camera may differ depending on the OS used. Ex.: [Removable disk], etc.
- If the SD memory card is formatted with the camera, [RICOHDCX] will display on the SD memory card.
- Do not copy [cx5_v119.frm] to [CLIPINFO] and [DCIM] folder.

4. Confirm that the files were correctly copied to the SD memory card

Windows



Macintosh



5. Windows

After copying of the files is completed, doubleclick the [Safely remove hardware] icon on the taskbar, and proceed to Step 6

Macintosh

Drag and drop the [RICOHDCX] to the Trash. When the icon has been ejected, proceed to Step 9 below.

- If these procedures are not completed, the firmware may not copy correctly.

6. Select [USB Mass-Storage Device], and click the [Stop] button

7. Click the [OK] button

8. Click the [Close] button

9. Turn off the camera, and disconnect the USB cable

Proceed to [4. Update the firmware] on p. 6.

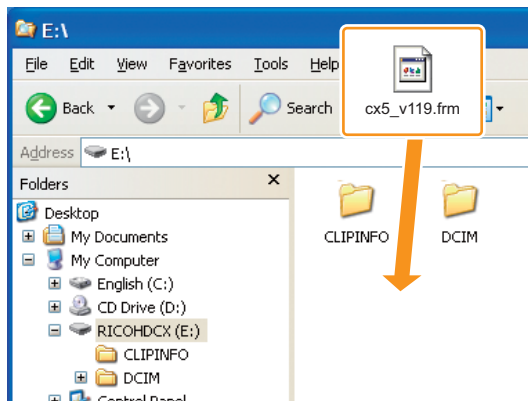
Caution

If the screen in step 2 does not appear, the USB communication method may be incorrect. Turn off the camera and disconnect the USB cable. Then, change the [USB Connection] setting to [Mass Storage] on the Setup Menu of the camera and start from step 1 again. (Refer to p.113 of the Instruction Manual.)

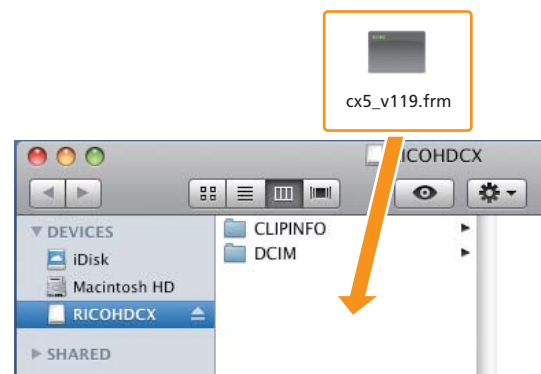
② Using the card reader/memory card slot to copy the firmware

1. Insert an SD memory card into a card reader connected to a computer or into the card slot on a computer
2. Copy the [cx5_v119.frm] file to the SD memory card
 - The file name is “cx5_v119.frm” when the firmware version is V1.19.

Windows



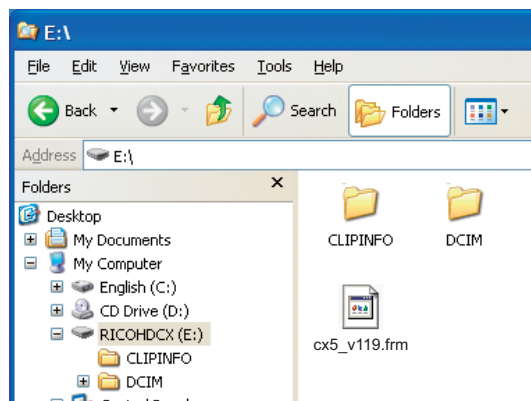
Macintosh



- Do not copy [cx5_v119.frm] to [CLIPINFO] and [DCIM] folder.

3. Open [RICOHDCX], and confirm that the files copied correctly

Windows



Macintosh



4. Windows

After copying of the files is completed, doubleclick the [Safely remove hardware] icon on the taskbar, and proceed to Step 5

Macintosh

Drag the [RICOHDCX] icon over and drop it into to the [Garbage can] icon, and proceed to Step 8 once the icon has been deleted

- If these procedures are not completed, the firmware may not copy correctly.

5. Select [USB Mass-Storage Device], and click the [Stop] button

6. Click the [OK] button

7. Click the [Close] button

8. Remove the SD memory card from the card reader/card slot and insert it into the camera

4. Update the firmware

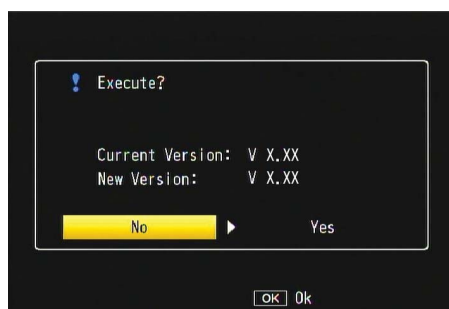
1. Turn on the camera

2. Press the MENU button

3. Push the ADJ./OK button toward the side and then side to display the Setup Menu

4. Push the ADJ./OK button toward the side and then side to select [Confirm Firmware Version], and push the ADJ./OK button toward the side

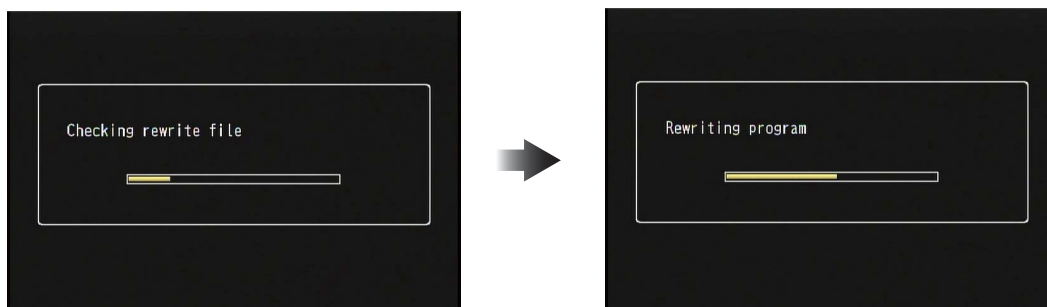
- A message confirming the firmware update will appear on the picture display.



- If the confirmation message does not appear, confirm whether the firmware file has been properly saved on the SD memory card.

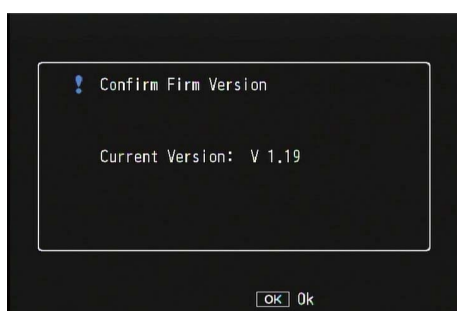
5. Push the ADJ./OK button toward the ⚡ side, select [YES], and press the ADJ./OK button

- The firmware update will start, and the message shown below will display on the picture display. The firmware update should take about 30 seconds to complete.



- When the update is complete, the camera will restart.

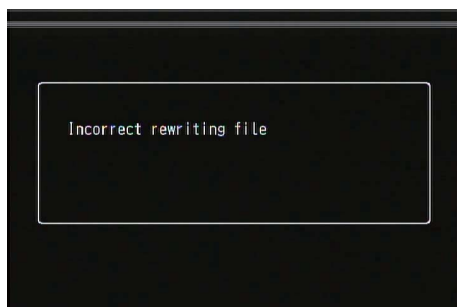
6. Confirm that the updated version is displayed in the picture display



7. Turn off the camera

Note

- If a message saying, [Incorrect rewriting file] appears on the picture display, check whether the firmware model matches the model of your camera.



- When the update is completed, please delete the firmware on the SD memory card using a computer or format the SD memory card using the computer (refer to p. 1).