



**RDC-i700**  
Windows XP  
Installation Guide

## CONTENTS

1. End User License Agreement .....	3
2. Important notes .....	4
3. Customer support.....	4
4. Installing the USB driver .....	4
I. Prior to installation.....	4
II. Installation procedure .....	4
5. Installing the Explorer plug-in .....	5
6. Using the Explorer plug-in .....	5

## **1. End User License Agreement**

The following is a legal software license agreement between you, the software end user, and Ricoh Company Ltd. Carefully read this license agreement before using the product. Using the product indicates that you have read this license agreement and agree to its terms.

### **Grant of License**

This license permits you to use one copy of the software included in this package on any single computer. For each software licensee, the program can be "in use" on only one computer at any given time. The software is "in use" when it is either loaded into RAM or installed into the hard disk or other permanent memory. A special license permit from Ricoh is required if the program is going to be installed on a network server for the sole purpose of distribution to other computers.

### **Copyright**

The software contained in this package is owned and published by Ricoh, and is protected by United States copyright laws, international treaty provisions, and all other applicable national laws. The software must be treated like all other copyrighted materials (e.g. books and musical recordings). This license does not allow the software to be rented or leased, and the written materials accompanying the software (if any) may not be copied.

### **Limited Warranty**

Ricoh warrants that the software contained herein will perform substantially in accordance with the accompanying documentation.

### **No Other Warranties**

Ricoh disclaims all other warranties, expressed or implied, including but not limited to implied warranties of merchantability and fitness for a particular purpose, with respect to the Software, and the accompanying written materials.

### **No Liability for Consequential Damages**

In no event shall Ricoh or the suppliers be liable for any damages whatsoever (including but not limited to damages for loss of business profits, business interruption, loss of business information, or any other pecuniary loss) which results from an inability to use this software, even if Ricoh has been advised of the possibility of such damages. Because some states/jurisdictions do not allow the exclusion or limitation of consequential or incidental damages, the above limitations may not apply to you.

### **U.S. Government Restricted Rights**

The Software and documentation are provided with Restricted Rights. Use, duplication, or disclosure by the U.S. Government is subject to restrictions as set forth in subparagraph c (1) (ii) of the Rights in Technical Data and Computer Software clause at DFARS 252.227-7013, or subparagraphs c (1), (2), and (3) of the Commercial Computer Software - Restricted Rights at 48 CFR 52.227-19, as applicable, and any amendments thereto. The manufacturer is Ricoh Company Ltd., 3-2-3, Shin-yokohama, Kohoku-ku, Yokohama-shi, 222-8530, Japan.

If this product was purchased in the United States, this Agreement is governed by the laws of the state of California; otherwise, local laws may apply.

Copyright © 2002, Ricoh Co., Ltd.

## **2. Important notes**

These instructions will guide you through the process of installing the RDC-i700 USB driver and utility software on your Windows XP computer. Be sure to read, understand, and observe all precautions and requirements prior to attempting these procedures. If you feel you need assistance, please contact our customer support network at the URL listed in the **Customer support** section below.

- Operating System: Windows XP (operation not guaranteed with other operating systems)
- Memory: 128MB or more (256MB or more is recommended)
- Connection cable: Use the dedicated cable included in the package
- Retrofit USB ports added by using an expansion feature (such as PCI bus) cannot be supported.
- Driver may fail to operate correctly when used with a USB hub or other USB devices.

## **3. Customer support**

The following URLs may be useful if you need support during the installation process.

### **Download Windows XP-compatible software**

[http://www.ricoh.co.jp/r\\_dc/dc/notices/xp-dl.html](http://www.ricoh.co.jp/r_dc/dc/notices/xp-dl.html)

### **Contact Ricoh's customer support team**

[http://www.ricoh.co.jp/r\\_dc/dc/support/inquiry.html](http://www.ricoh.co.jp/r_dc/dc/support/inquiry.html)

## **4. Installing the USB driver**

**Note:** The authority to install the driver to Windows XP is limited to users with administrator accounts. Users who cannot log on as administrators will not be able to install this driver.

### **I. Prior to installation**

- (1) Download the latest RDC-i700 software at the URL above. Be sure to note the location where you save the downloaded files. You will need that information during the installation. Also, be sure to save the downloaded files to your computer's hard drive.
- (2) Save any important data you may be using and then quit all running applications.
- (3) Disconnect any other USB or Plug & Play devices.

### **II. Installation procedure**

#### **Before connecting the RDC-i700 to your computer**

- (1) Browse to the folder where you saved the downloaded files. Locate the **Win2000** folder and open it.
- (2) Click on the **setup.exe** icon to start the installation process.
- (3) Choose your preferred language from the list and click **OK**.
- (4) Click **Next** at the Welcome screen.
- (5) Choose whether to restart your computer now or later, then click **Finish** to complete the installation.

#### **After connecting the RDC-i700 to your computer**

- (1) Insert the software CD-ROM that came packaged with your RDC-i700 into your computer's CD-ROM drive.
- (2) Turn the camera mode dial to **PC** and press the ON/OFF button.
- (3) The Found New Hardware Wizard should appear. When it does, select "Install from a list or specific location (Advanced)" and click **Next**. (See Figure 1.)
- (4) In the screen that follows, make sure "Search removable media" is selected, then click **Next** to start the installation.
- (5) Windows will display a warning message, but this message can safely be ignored. Click **Continue Anyway** to continue. (See Figure 2.)
- (6) Click **Finish** when the wizard notifies you that the installation has finished.

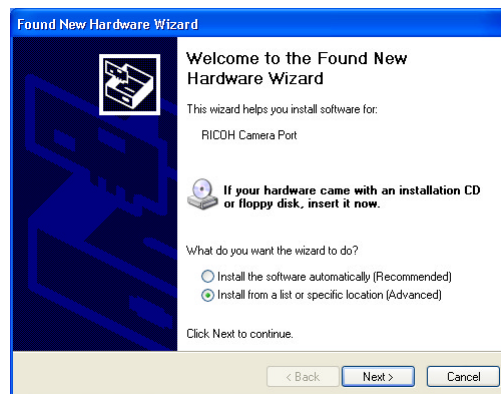


Figure 1: Found New Hardware wizard



Figure 2: Ignore this warning

## 5. Installing the Explorer Plug-in

- (1) Browse to the folder where you saved the downloaded files. Locate the **Disk1** folder and open it.
- (2) Click on the **setup.exe** icon to start the installation.
- (3) Choose your preferred language from the list and click **OK**.
- (4) Click **Next** at the Welcome screen.
- (5) Click **Next** at the Choose Destination Location screen to accept the default or **Browse** to select a different location.
- (6) Select **Typical** to install the standard components or **Custom** to customize your installation, then click **Next**. (Note: If you choose the Custom option, the Explorer Plug-in and Virtual Server Process options must be selected for the camera to work properly.)
- (7) Specify a program folder (if desired) and click **Next**.
- (8) Click **Finish** to finish the installation.

## 6. Using the Explorer plug-in

- (1) Connect the PC to the camera using the USB cable provided. Turn the camera mode dial to PC and press the ON/OFF button.
- (2) Launch Explorer.
- (3) Enter the URL displayed on the RDC-i700's LCD display into Explorer's Address field, then press **Enter**.
- (4) Select the options that best suit your needs from the on-screen display. (See Figure 3.)

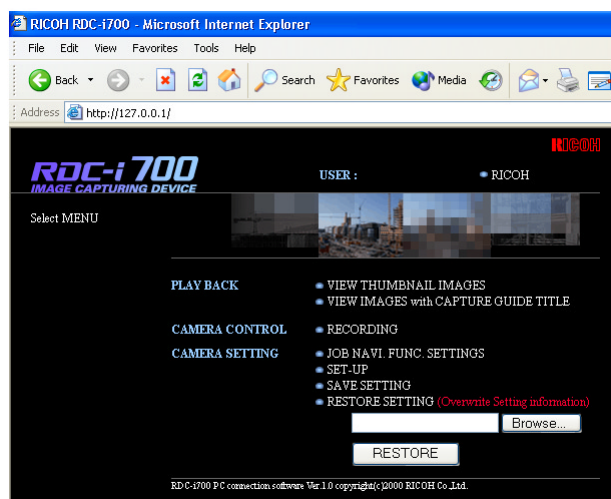


Figure 3: RDC-i700 main menu