

# JAMP MSDSplus Input Support Tool Ver.4.1 Operation Manual

June 25, 2013



*Copyright 2013 JAMP. All Rights reserved.*

# Contents

## **JAMP MSDSplus Input Support Tool Ver.4.1 Operation Manual ..... 1**

<b><u>1.</u></b>	<b><u>Introduction .....</u></b>	<b><u>1</u></b>
1.1.	Outline .....	1
1.2.	System requirement.....	1
1.3.	Notation in This Document.....	2
<b><u>2.</u></b>	<b><u>Method of Using Input Support Tool .....</u></b>	<b><u>3</u></b>
2.1.	Assumed Usage Example.....	3
2.2.	Unassumed Usage Example.....	3
<b><u>3.</u></b>	<b><u>Operating of Input Support Tool.....</u></b>	<b><u>4</u></b>
3.1.	Starting Input Support Tool .....	4
3.1.1.	Placing External List.....	4
3.1.2.	Enabling Macros .....	5
3.1.3.	Description Sheet- Selecting Functions.....	7
3.1.4.	Checking External List Version .....	7
3.1.5.	Selecting Language.....	7
3.2.	General Information Sheet.....	8
3.2.1.	MSDSplus Information.....	9
3.2.2.	Product Information .....	10
3.2.3.	Issuing company Information.....	11
3.2.4.	Substance Information .....	12
3.2.5.	Relevant Standard Information .....	13
3.3.	Operating General Information Sheet.....	13
3.3.1.	Import XML Button .....	13
3.3.2.	Clear General Information Button .....	15
3.3.3.	Print Button .....	16
3.4.	Composition List Sheet .....	16
3.4.1.	Substance .....	17
3.4.2.	Concerned Regulation or Other Standards Indicated by JAMP.....	19
3.5.	Operating the Composition List Sheet .....	20
3.5.1.	All Clear Button .....	20
3.5.2.	Selected Row Delete Button.....	21
3.5.3.	Update Substance Info Button.....	22
3.5.4.	Error Check Button.....	24
3.5.5.	Export XML/Temporally SAVE Buttons .....	25

<b>3.6.</b>	<b>Selection Screen of Composition List Sheet.....</b>	<b>26</b>
3.6.1.	Select Substance Screen (Detailed Description) .....	26
<b>3.7.</b>	<b>Requester Information Sheet .....</b>	<b>28</b>
<b>3.8.</b>	<b>Setting Sheet .....</b>	<b>29</b>
3.8.1.	Initial setting .....	29
3.8.2.	Publisher Template .....	29
3.8.3.	Requester Template .....	30
3.8.4.	Save Settings .....	30
<b><u>4.</u></b>	<b><u>Troubleshooting .....</u></b>	<b><u>31</u></b>
4.1.	If Error Occurs and You Cannot Proceed to Next Step.....	31
4.2.	Malfunction Due to Bugs in Microsoft Excel .....	31
4.3.	Malfunction Due to Settings in Microsoft Excel .....	31

**Office of Joint Article Management Promotion-consortium (JAMP)**  
**c/o Japan Environmental Management Association For Industry (JEMAI)**  
**Mitsui-Sumitomo Bank Kanda Ekimae Bldg. 7F 2-2-1 Kaji-cho, Chiyoda-ku, Tokyo**  
**101-0044 Japan**  
**E-mail: [jump@jemai.or.jp](mailto:jump@jemai.or.jp)**

# 1. Introduction

---

## 1.1. Outline

This is the operation manual for MSDSplus Input Support Tool, which was produced by JAMP.

The following chapters describe the operation of the tool:

### **2 Method of Using Input Support Tool**

This chapter indicates main methods of using the tool and introduces parts to be referred to for each application.

### **3 Operating of Input Support Tool**

This chapter describes the method of operating each part of the tool.

### **4 Troubleshooting**

This chapter picks up problems that are likely to occur in using the tool and shows the solutions to them.

## 1.2. System requirement

The Input Support Tool requires the following specifications:

- Windows XP Service Pack3 or later
- Microsoft Excel 2003 or later, by 2010
- Screen resolution: 1024 x 768 dots or higher

### Ownership and copyright

This Tool has been created by JAMP, which is the legal owner and copyright holder. The Tool must not be sold either as a single product or in combination with any other product(s). JAMP also prohibits any combination of the whole or any part of the tool with any other tool. Should you wish to effect such a combination, please consult JAMP in advance.

### Distribution

JAMP hereby allows the Tool to be copied and distributed provided that the Tool is to be used to create JAMP AISs.

### Disclaimer

JAMP assumes no liability whatsoever for any damage resulting from the possession and/or use of this Tool. In addition, JAMP has no obligation with respect to the correction of any error made with the Tool or the maintenance thereof. The information on substances to be reported contained in the Tool is intended only to support the user's input of such information. Therefore, where a user uses the Tool to search for relevant legal regulations, to collate CAS Nos., etc., the user and the user alone shall be held liable for the substance-related information resulting from such search, collation, etc. JAMP shall not be held liable in any way for such information. The user shall therefore assume full liability with respect to any information he/she prepares in an AIS using this Tool.

## 1.3. Notation in This Document

### XML

MSDSplus files are saved in XML file format. "XML" in this document and in the Input Support Tool refers to XML file format of MSDSplus.

### Earlier Versions

This document and the Input Support Tool based on Ver. 4.0 and Ver. 4.1. The "earlier versions" in this document refer to Ver. 3.0- Ver.3.1 based on in earlier versions.



This icon refers to modifications from the earlier versions and precautions in operation.



This icon refers to prohibitions in operation and warnings of undesirable operation.

## 2. Method of Using Input Support Tool

---

### 2.1. Assumed Usage Example

Usages like the following examples are intended for MSDSplus Input Support Tool.

#### **Referring to Existing MSDSplus**

You can import and refer to the existing MSDSplus as follows.

- For importing the existing MSDSplus, refer to "3.3.1 Import XML Button (Page 13)."
- If you check the content of the existing MSDSplus, refer to "3.5.4 Error Check Button (Page 24)."

#### **Creating New MSDSplus**

Inputs information into each sheet of the tool and export MSDSplus in xml format.

- If there is information already entered, you have to initialize the entered information before creating new MSDSplus.

For initializing operation, refer to "3.3.2 Clear General Information Button (Page 15)" and "3.5.1 All Clear Button (Page 20)."

#### **Creating New MSDSplus with existing MSDSplus**

For revising the MSDSplus produced by your own company, updating the format of an earlier version, and editing similar MSDSplus based on the existing MSDSplus, it is easy to import and edit the MSDSplus and re-export it as another MSDSplus.

- For importing the existing MSDSplus, refer to "3.3.1 Import XML Button (Page 13)."
- If the Substance List was updated in the MSDSplus of Ver. 4.0 and Ver. 4.1, there is a case where you want to update with the new Substance List to the existing. For updating the Substance List and updating the format of an earlier version, refer to "3.5.3 Update Substance info Button (Page 22)."

### 2.2. Unassumed Usage Example

#### **Distributing Tool file itself with the data as a response**

The Input Support Tool is a tool for viewing and creating MSDSplus and is not the data itself. It is not assumed to distribute Excel files of this tool with various types of information entered for communication.

## 3. Operating of Input Support Tool

### 3.1. Starting Input Support Tool

This section describes precautions in starting the Input Support Tool.

#### 3.1.1. Placing External List

The Input Support Tool Ver. 4.0 does not run without the Substance List, and other necessary list. These lists are separated from the tool itself in version 4.0 and compiled as an external list. Place the external list file available in the JAMP web site into the folder that includes the Input Support Tool. Note that the file names shown in Figure 3-1 are based on the data available at the time when this manual was issued and are subject to change in future. The external list file will be updated when Substance List is revised. Please use the latest external list. The file name of the external list is "JAMP\_MSDSplus\_AIS\_EXLIST\_YYYYMMDD."



When you place the external list, do not change the file name.

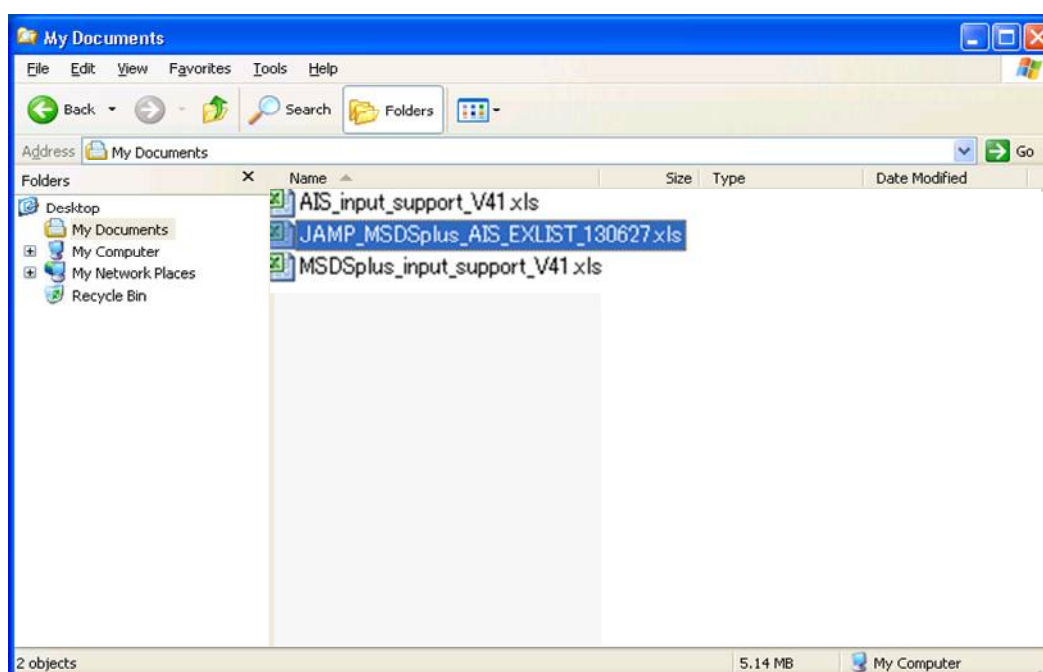


Figure 3-1 Placing External List

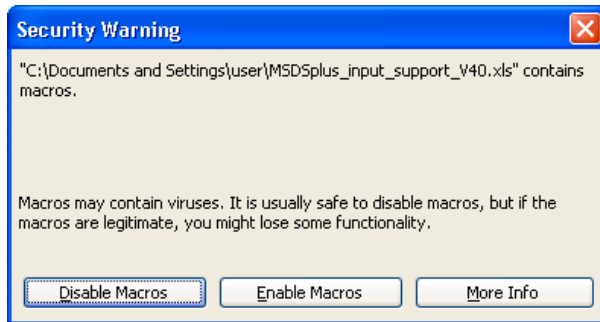
### 3.1.2. Enabling Macros

You have to enable macros, because this tool works with the macro feature of Microsoft Excel. A method of enabling macros varies depending on the version of Excel.

#### Excel 2002/2003

In Excel's menu "Tools" -> "Macro" -> "Security" -> "Security Level" page, set the level to medium and start up this tool (Excel file).

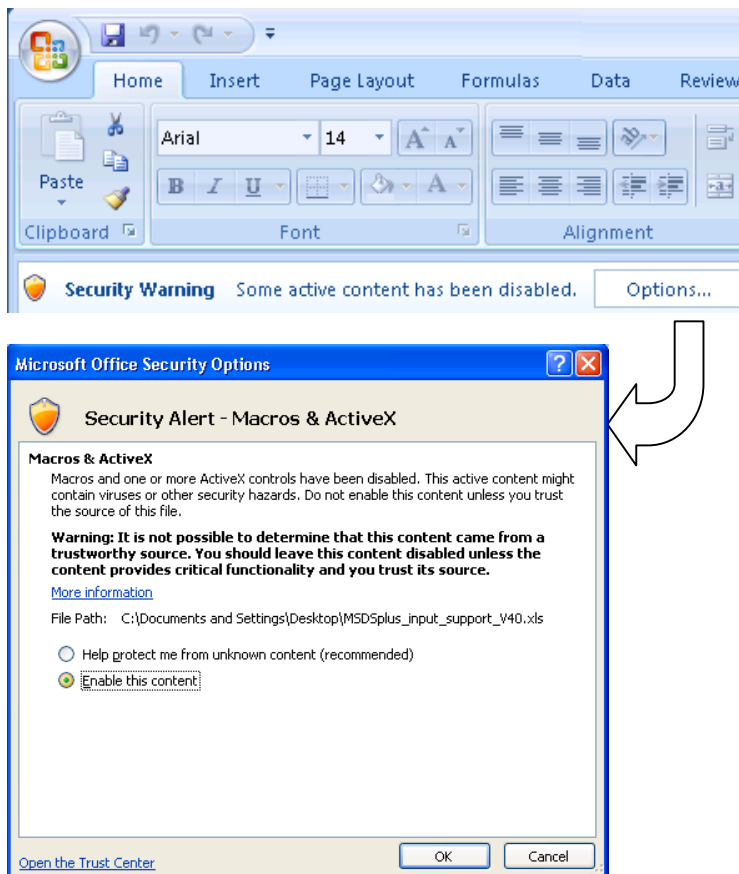
In the screen that appears first from Excel, click "Enable Macros".



**Figure 3-2 Enabling Macros in Excel 2003 or Earlier**

#### Excel 2007

After you start up this tool, Security Warning appears below the Excel menu (the toolbar on the upper part of the screen). Click "Options ...". The Microsoft Office Security Options screen appears. Select "Enable this content".

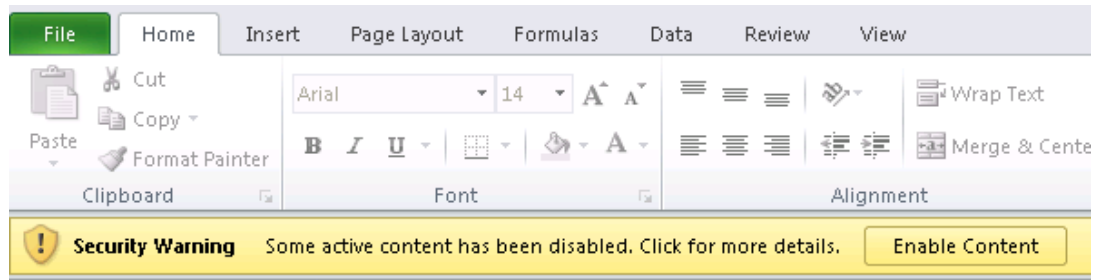


**Figure 3-3 Enabling Macros in Excel 2007**



## **Excel 2010**

After you start up this tool, Security Warning appears below the Excel menu (the toolbar on the upper part of the screen). Click "Enable Content".



**Figure 3-4 Enabling Macros in Excel 2010**

### 3.1.3. Description Sheet- Selecting Functions

After the Input Support Tool is started, the description sheet appears first. Note that the version numbers of material lists shown in Figure 3-5 are based on the most up-to-date data available at the time when this manual was issued and they are subject to change in future.

Input support tool of JAMP MSDSplus version 4.1
<p>This tool provides functions such as filling, editing, and viewing to support your MSDSplus operation.</p> <p>Items that values are specified have options to select. For substance, the function that you can search and select from substance search list of JAMP is implemented.</p> <p>Please confirm all data of your MSDSplus included substance information that are filled in automatically by this tool, since you have responsible for the contents of the MSDSplus.</p> <p>When you cannot find out a substance from search list, you can fill in the information manually.</p> <p>For detail of each item, please see Tool operation manual and MSDSplus manual.</p>
<p><b>Start-up the tool</b></p> <p>Operating environment is as follows.</p> <ul style="list-style-type: none"> <li>-Versions higher than Windows XP SP3</li> <li>-Versions over Excel 2003 and under Excel 2010</li> <li>-Higher than Screen resolution of 1024 x768</li> </ul> <p>This tool must be enabled Excel macros as it is created by programming macros in Excel. In case of using it in Excell 2003, click the button to enable macros.</p> <ul style="list-style-type: none"> <li>- In the case of Excel 2002, 2003</li> </ul> <p>When you start up the Excel file containing this Tool, the confirmation dialog appears first. Select "Enable macros." This confirmation screen might not appear, depending on the Excel security level setting.</p> <ul style="list-style-type: none"> <li>- In the case of Excel 2007 or later</li> </ul> <p>After you start up this Tool, a security warning appears below the Excel menu (The toolbar on the upper part of the screen). Click on "Options ...."</p> <p>The Security Option screen appears. Then Choose "Enable this content."</p>
<p><b>About External List</b></p> <p>This tool is able to run with the external list file that contains Substance list ,Material list, and necessary list of applicable laws such as exemptions. Executing this tool, the tool file and the external list file must be placed to the same folder.</p> <p>The name of external list file is "JAMP_MSDSplus_AIS_EXLIST_yyyymmdd.xls" Herein yyyymmdd represents date of issuing. Versions of Substance list is shown below of this sheet.</p> <p>The external list file will be updated when Substance list is revised. Please use a latest external list.</p> <p>Click [Confirm Latest Version] button to confirm its latest version. This function accesses latest version info. located on JAMP Web site and compare to that of on local folder. This function also works at the tool start-up.</p> <p>For environment that cannot access internet, there is option to be disable internet access at start-up in Functional Option sheet.</p>
<p style="text-align: right;"><b>Substance List Version</b> 4.000</p>

Figure 3-5 Description Sheet

### 3.1.4. Checking External List Version

If you start up the Input Support Tool when you can connect to the Internet, the following dialog (Figure 3-6 or Figure 3-7) appears, depending on the condition of the external list.

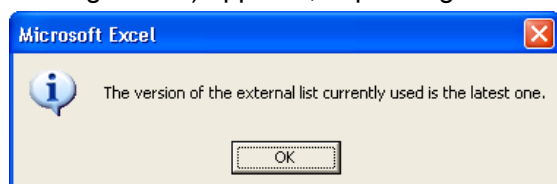


Figure 3-6 External List Version Check Result (1)

This indicates the result of connecting the JAMP web site to see whether the external list file placed in the same folder is the latest one. If a newer external list file has been released, the following dialog appears. In this case, download the latest version of external list from the JAMP web site, place it in the same folder, and then open the tool again.

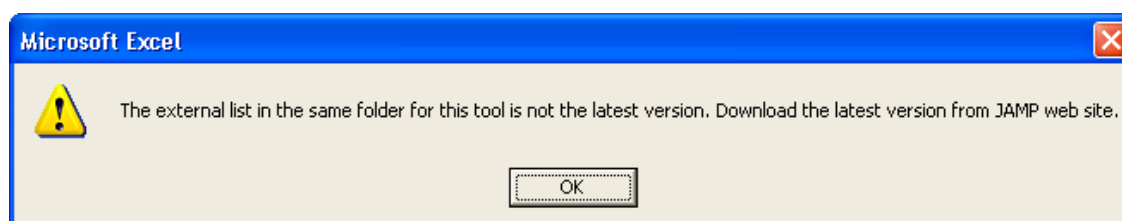


Figure 3-7 External List Version Check Result (2)

### 3.1.5. Selecting Language

This tool supports Japanese, English, and Chinese. If you want to change the language of the tool, Selects the Edit mode and then switch languages to by using in "Setting Sheet (Page 29)."

## 3.2. General Information Sheet

This is the sheet to enter general information of MSDSplus.

Be sure to enter information of the items marked with \*. If information is not entered for a required item, the cell is displayed in orange. The items in gray fields are automatically set by the tool and cannot be edited manually. Note that the version numbers shown in Figure 3-8 are based on the most up-to-date data available at the time when this manual was issued and they are subject to change in future.

JAMP MSDSplus		Import XML	Please fill in the information within the bold lines. * Marked Column: Required Field
Print	Clear General Information		
<b>MSDSplus Information</b>			
Format Version		Ver.4.1	
Substance List Version		4.000	
GP(Global Portal) Sheet ID		9999999999999999	
Sheet Reference Number			
Original	Issued Date *		
Revision	Latest Issued Date		
	Revision History *	1	
<b>1.Product Information</b>			
Manufacturer Name *			
Product name *			
Issuing Company Item Number	Alphanumeric *		
	Mother Language		
Common Product Name *			
<b>2. Issuing company Information</b>		Import Template	
Company Name	Alphanumeric *		
	Mother Language		
Company ID	ID Organizer		
	Entity ID		
Issuing Department	Department Name *		
	Address *		
	Telephone Number *		
	FAX Number		
Department in Charge of Preparing AIS	Email Address		
	Department Name		
Department in Charge of Preparing AIS	Telephone Number		
	Remarks		
<b>3.Substance Information</b>			
Declaration Concerning Substance Information *		1.This product contains the following substance(s) listed in the relevant standard and to be notified	
The details are shown in the other sheet.			
<b>4.Relevant Standard Information</b>		Update Revision	
Relevant Standard		Issued or revised	
JP01	Japanese Chemical Substances Control Law (Class I Specified Chemical Substances) *	2010-04-01	
JP02	Industrial Safety and Health Act (Substances Prohibited of Manufacturing etc.) *	2007-09-07	
JP03	Poisonous and Deleterious Substances Control Law (Specified Poisonous Substances) *	2007-08-15	
EU01	RoHS Directive *	2011/65/EU	
EU02	ELV Directive *	2011/37/EU	
EU03	CLP [Annex VI Table 3.2 CMR-cat. 1,2] *	EUNo 618/2012	
EU04	REACH Annex XVb [Except EU03] *	EUNo 126/2013	
EU05	REACH SVHC on the Candidate List *	2013-06-20	
EU06	POPs Annex 1 *	2012-06-20	
OT01	ESIS PBT [Fulfilled] *	2008-10-28	
IA01	GADSL *	2013 GADSL Version 1.0	
IA02	IEC62474/JIG *	IEC62474 D3.00	
Information Content	PBT	1.covers PBT scope	
	GADSL	1.covers GADSL scope	
	JIG	1.covers JIG scope	

**Figure 3-8 General Information Sheet**

Considerations for entering information of the items are described on the pages that follow.

(For details of all the items, refer to "MSDSplus preparation manual".)

### 3.2.1. MSDSplus Information

Information of MSDSplus itself is entered in these fields. Note that the version numbers of material lists shown in Figure 3-9 are based on the most up-to-date data available at the time when this manual was issued and they are subject to change in future.

#### MSDSplus Information

Format Version		Ver.4.1
Substance List Version		4.000
GP(Global Portal) Sheet ID		9999999999999999
Sheet Reference Number		
Original	Issued Date *	
Revision	Latest Issued Date	
	Revision History *	1

Figure 3-9 MSDSplus Information (General Information Sheet)

#### Format Version

Format version of the MSDSplus in editing (Ver. 4.1 shown here).

If you import an earlier version of MSDSplus, a format version of Ver. 3.1 or earlier is displayed. However, if you update the substance information, it is regarded as being converted and exported in a new format, and the format version is also updated to Ver. 4.1.

#### Substance List Version

Version of the material list and substance list of the MSDSplus imported.

The version of the imported MSDSplus is displayed. However, if you update the substance information, it is regarded as being converted and exported in a new format, and the version is updated to the list version of the external list.

#### Original/Issued Date

Enter the date when you issued the MSDSplus first.

(If you use the "Clear General Information" button for initialization, the current date is automatically entered.)

#### Revision/Latest Issued Date and Revision History

For the Latest Issued Date, enter the latest date when you revised the MSDSplus. If it is the original, you do not have to fill in the field. However, if it has been revised (the Revision History is other than 1), you have to fill it in.

For the Revision History, enter the revision number in an integer (enter 1 for the original, and increase the value by 1 for each revision after that).

### 3.2.2. Product Information

Enter information of the product.

#### 1.Product Information

Manufacturer Name *		
Product name *		
Issuing Company Item Number	Alphanumeric *	
	Mother Language	
Common Product Name *		

Figure 3-10 Product Information (General Information Sheet)

#### Manufacturer Name

This item has been added as a required item in Ver. 4.0 in conjunction with AIS.

#### Issuing Company Item Number/Alphanumeric and Mother Language

This item was "Product Number" in earlier versions of Input Support Tool. In Ver. 4.0, the item name has been changed to "Issuing Company Item Number," and it is required to enter alphanumeric data in conjunction with AIS.

In the "Alphanumeric" field, only single-byte alphanumeric and symbol characters can be entered.

In the "Mother Language" field, enter the issuing company item number in Japanese or other languages, as in the case of an earlier version.



When you import an earlier version of MSDSplus, the conventional issuing company item number is import the "Alphanumeric" field. For the issuing company item number of an earlier version, some symbols could not be entered. In Ver. 4.0 or later, you can also enter symbols such as a slash if it is single-byte.

The alphanumeric issuing company item number is used as part of the file name during the XML export. The symbol characters that cannot be used as a file name are converted into "\_" in the file name.

Example: When the item number is "JAMP/SMPL001," the file name contains "JAMP\_SMPL001."

### 3.2.3. Issuing company Information

Issuing company's information for the MSDSplus is entered in these fields.

#### 2. Issuing company Information

2. Issuing company Information		Export Template
Company Name	Alphanumeric *	
	Mother Language	
Company ID	ID Organizer	
	Entity ID	
Issuing Department	Department Name *	
	Address *	
	Telephone Number *	
	FAX Number	
Department in Charge of Preparing AIS	Email Address	
	Department Name	
	Telephone Number	
Remarks		

Figure 3-11 Issuing company Information (General Information Sheet)

#### Company Name/Spelling in Alphanumeric and Mother Language

In the "Alphanumeric" field, only the single-byte alphanumeric and symbol characters can be entered.

In the "Mother Language" field, enter the issuing company name in Japanese or other languages, as in the case of an earlier version.



When you import an earlier version of MSDSplus, the conventional issuing appears the "Alphanumeric" field. If it contains Japanese characters and is not changed, an error occurs during export. When you update it from an earlier version, enter the name in the "Mother Language" field and fill in the "Alphanumeric" field separately.

#### Import from Template for company information

If you click the "Import Template" button, the information entered in the "Publisher Template" field in the "Setting" sheet is copied. Since the same issuing company information is entered repeatedly in multiple units of MSDSplus, you can create an MSDSplus efficiently by using this function.

### 3.2.4. Substance Information

Select the Declaration Concerning Substance Information (details are described in the Composition List sheet).

#### 3.Substance Information

Declaration Concerning Substance Information	1.This product contains the following substance(s) listed in the relevant standard and to be notified
The details are shown in the other sheet.	

**Figure 3-12 Substance Information (General Information Sheet)**

#### Declaration Concerning Substance Information

Select whether the article contains declarable substances within the scope of Concerned Regulation or Other Documents Indicated by JAMP or not.



During XML export, it is checked whether the declaration is consistent with the content of the composition list. If the field says that the article is confirmed to contain such substances, but the composition list does not have the information (or vice versa), it is displayed as an error during export.

### 3.2.5. Relevant Standard Information

Enter "Issued or revised" for the Relevant Standard.

For standards for which the application was selectable in earlier versions, the coverage is displayed.

Note that the laws and regulations as well as the figures shown in Figure 3-13 are based on the most up-to-date data available at the time when this manual was issued and they are subject to change in future.

#### 4.Relevant Standard Information

Update Revision

Relevant Standard			Issued or revised
JP01	Japanese Chemical Substances Control Law (Class I Specified Chemical Substances)	*	2010-04-01
JP02	Industrial Safety and Health Act (Substances Prohibited of Manufacturing etc.)	*	2007-09-07
JP03	Poisonous and Deleterious Substances Control Law (Specified Poisonous Substances)	*	2007-08-15
EU01	RoHS Directive	*	2011/65/EU
EU02	ELV Directive	*	2011/37/EU
EU03	CLP [Annex VI Table 3.2 CMR-cat. 1,2]	*	EUNo 618/2012
EU04	REACH Annex XVII [Except EU03]	*	EUNo 126/2013
EU05	REACH SVHC on the Candidate List	*	2013-06-20
EU06	POPs Annex I	*	2012-06-20
OT01	ESIS PBT [Fulfilled]	*	2008-10-28
IA01	GADSL	*	2013 GADSL Version 1.0
IA02	IEC62474/JIG	*	IEC62474 D3.00
Information Content	PBT		1.covers PBT scope
	GADSL		1.covers GADSL scope
	JIG		1.covers JIG scope

Figure 3-13 Relevant Standard Information (General Information Sheet)

#### PBT/GADSL/JIG

In Ver. 4.0 and 4.1, "covers" is required.

## 3.3. Operating General Information Sheet

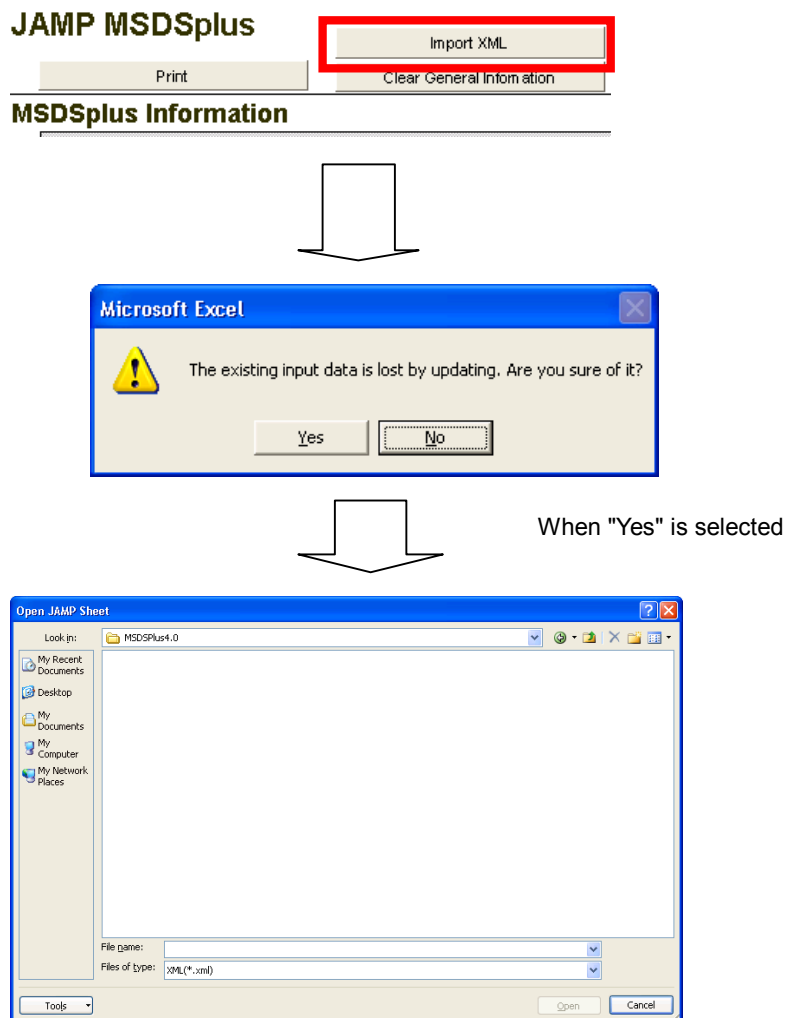
This section describes the operation of the buttons displayed at the top of the general information sheet.

### 3.3.1. Import XML Button

This section describes how to import the existing MSDSplus.

If you press the "Import XML" button in the general information sheet, a dialog for selecting MSDSplus to import appears, and the importing process is performed by specifying the MSDSplus in the dialog.





**Figure 3-14 Procedure of Operating "Import XML"**

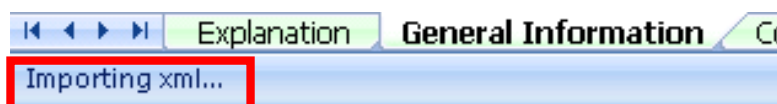
### **File Formats That Can Be Imported by MSDSplus Input Support Tool**

You can select the following files:

- Files for original parts MSDSplus4.0 (File name: "MSDSp4\_yyyymmdd\_xxxx.xml") herein yyyymmdd represents date of issuing and xxxx represents issuing company item number
- MSDSplus containing errors (File name: "MSDSp4\_Error\_yyyymmdd\_xxxx.xml") herein yyyymmdd represents date of issuing and xxxx represents issuing company item number
- Temporarily saved MSDSplus (File name: "MSDSp4\_Temp\_yyyymmdd\_xxxx.xml") herein yyyymmdd represents date of issuing and xxxx represents issuing company item number
- Earlier version of MSDSplus (File name: "MSDSp\_yyyymmdd\_xxxx.xml") herein yyyymmdd represents date of issuing and xxxx represents issuing company item number

### **XML Importing Process**

If the number of rows entered in the composition list is many, it may take a lot of time to import MSDSplus. During the import process, the bottom left status bar shows "Importing xml..."



**Figure 3-15 Status Bar Showing "Importing xml..."**

After importing is completed, the completion message is displayed.

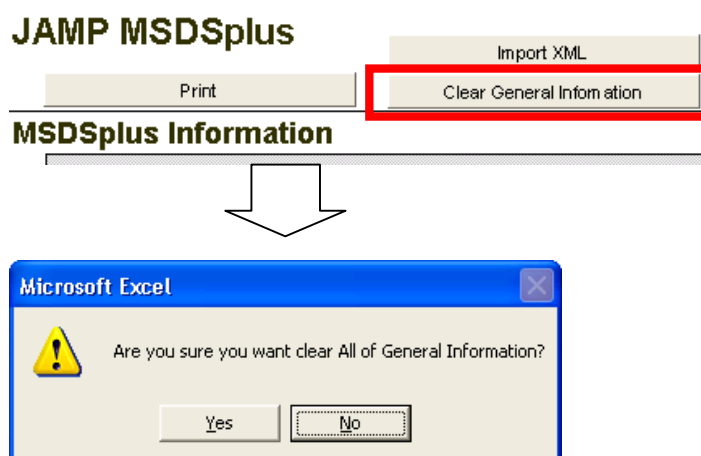


**Figure 3-16 XML Importing Completion Message**

### 3.3.2. Clear General Information Button

You can use the "Clear General Information" button to clear all the inputs in the composition list.

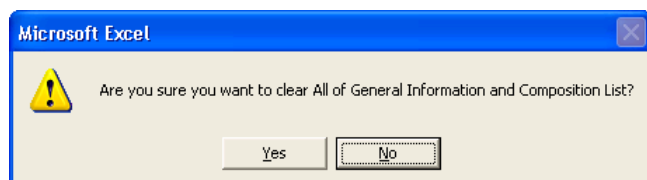
Note that if you use this button in the middle of an input, all the content is erased and cannot be undone.



**Figure 3-17 Clearing General Information**

When you import an earlier version of MSDSplus, not only the general information sheet but also the composition list is cleared.

If you want to save the content of the composition list, update the substance information (Page 22) and then use the "Clear General Information" button.



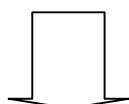
**Figure 3-18 Clearing General Information (when an earlier version is open)**

### 3.3.3. Print Button

In earlier versions of MSDSplus Input Support Tool, the General Information and the Composition List are in the same sheet and can be printed together. This tool offers a printing sheet separately. Note that the version numbers shown in Figure 3-19 are based on the most up-to-date data available at the time when this manual was issued and subject to change in future.

## JAMP MSDSplus

Print	Import XML
	Clear General Information



## JAMP MSDSplus

### MSDSplus Information

Format Version		Ver.4.1
Substance List Version		4.000
GP(Global Portal) Sheet ID		9999999999999999
Sheet Reference Number		
Original	Issued Date	
Revision	Latest Issued Date	
	Revision History	1

### 1. Product Information

Manufacturer Name		JAMP
Product name		JAMP01A
Issuing Company Item Number	Alphanumeric	JAMP01A
	Mother Language	
Common Product Name		

### 2. Issuing company Information

Company Name	Alphanumeric	JAMP
	Mother Language	
Company ID	ID Organizer	
	Entity ID	
Issuing Department	Department Name	
	Address	
	Telephone Number	03-0003-0003
	FAX Number	
	Email Address	chemical@jamp.co.jp
Department in Charge of Preparing AIS	Department Name	
	Telephone Number	
Remarks		

### 3. Substance Information

Declaration Concerning Substance Information		1. This product contains the following substance(s) listed in the relevant standard and to be notified															
*1 *1 (or symbols that mean to be contained)* is marked if a substance listed in the relevant standard and to be notified is intentionally added																	
*1 (or symbols that mean to be contained)* does not directly mean legally regulated. It depends on use and other conditions.																	
*2 Notified if there is additional information																	
*3 For more information please refer to "The List of JAMP Declarable Substances; Instruction Manual".																	
*4 The information herein is given in good faith, but no warranty, express or implied, is made. It is the user's responsibility and completeness of this information for his own particular use.																	
Substance Name	CAS Number	Max. Concentration	Remarks *2	Relevant Standard *1													
				JP 01	JP 02	JP 03	EU 01	EU 02	EU 03	EU 04	EU 05	EU 06	OT 01	IA 01	IA 02		
Ethane, monochlorodifluoro-	338-65-8	00.0%															D/P R

**Figure 3-19 Printing MSDSplus**

If you press the "Print" button in the General Information sheet, the content of the General Information and the Composition List is copied to the printing sheet. Use the printing function of Excel for export.

## 3.4. Composition List Sheet

This sheet is used to enter details of the composition of articles.

Be sure to enter information of the items marked with \*. If information is not entered for a required item, the cell is displayed in orange. The items in gray fields are automatically set by the tool and cannot be edited manually.

## JAMP MSDSplus

### 3.Substance Information

All Clear		Delete selected row		Update Substance Info	Error Check	Temporarily SAVE	Export XML	
Substance				Relevant Standard *1				
Select		Add						
Substance Name *	CAS Number *	Max. Concentration *	Remarks *2	JP01 Applicable	JP02 Applicable	JP03 Applicable	EU01 Applicable	EU02 Applicable

EU03	EU04	EU05	EU06	OT01	IA01	IA02
Applicable	Applicable	Applicable	Applicable	Applicable	Applicable	Applicable

**Figure 3-20 Composition Information (separated because it is long sideways)**

The composition list is tree-structured and divided into the Level, Component, Material, and Substance. A method of entering each item is described in the sections that follow. For the operation of the buttons at the top of the screen, refer to "3.5 Operating the Composition List Sheet (Page 20)."

#### 3.4.1. Substance

The substances, concentration, and other information of a material are entered in these fields (up to 50 substances can be entered).

Substance			
Select		Add	
Substance Name *	CAS Number *	Max. Concentration *	Remarks *2

**Figure 3-21 Substance Input Fields**

#### Adding Substances

You can use the "Add" button in the Substance column to add rows by the substance unit.

## Selecting Substances

Select a cell where you want to enter substances and press the "SELECT" button in the Substance column, and the Select Substance dialog appears.

Select the substance from the options and click "SELECT". The CAS No., Substance Name, and applicable flag of each regulation are entered in the selected Substance row (if you click the "CANCEL" button, the screen closes without inputting in the component list).

**Select Substance**

Filter Substance list

☐ JP01 ☐ EU01 ☐ EU04 ☐ OT01  
☐ JP02 ☐ EU02 ☐ EU05 ☐ IA01  
☐ JP03 ☐ EU03 ☐ EU06 ☐ IA02

Search by

☒ Match Partial ☐ Match Whole

Sort by

Ver. 4.000

CAS	EC No.	NAME
10022-31-8	233-020-5	Barium-nitrate
10022-48-7	600-038-3	Chromic acid (H <sub>2</sub> CrO <sub>7</sub> ), dilithium salt, dihydrate
10022-68-1		Cadmium nitrate tetrahydrate; Cadmium nitrate
100231-59-2	309-359-0	Sodium [4-[[[6-[[4-amino-6-chloro-1,3,5-triazin-2-yl)amino]-1-hydroxy-3-sulpho-2-naphthyl]azo]-
1002-53-5		Dibutyl tin
10025-68-0	233-037-8	Diselenium dichloride
100258-44-4	309-388-9	Strychnidin-10-one, arsenite (1:1)
10026-03-6	233-053-5	Selenium tetrachloride
10026-17-2	233-061-9	Cobalt(II) fluoride
10026-18-3	233-062-4	Cobalt fluoride (CoF <sub>3</sub> )
10026-22-9	600-049-3	Cobalt nitrate
10026-23-0	233-064-5	Cobalt(2+) selenite
10026-24-1	600-050-9	Cobalt sulfate heptahydrate
10028-18-9	233-071-3	Nickel fluoride (NiF <sub>2</sub> )

CAS 10022-31-8 EC No. 233-020-5

Name Barium-nitrate

Group Name Barium compounds (organic or water soluble), selected

☐ JP01[Substance Cont. Law Class I] ☐ EU01[2011/65/EU RoHS] ☐ OT01[ESIS PBT Fulfilled]  
☐ JP02[Safety and Health Act Prohibited of Mfrg] ☐ EU02[2011/37/EU ELV] ☒ IA01[GADSL]  
☐ JP03[Poisonous and Deleterious Law] ☐ EU03[CLP Annex VI CMR 1,2] ☐ IA02[IEC62474/JIG]  
☐ EU04[REACH Annex XVII Except EU03]  
☐ EU05[REACH SVHC in Candidate List]  
☐ EU06[POPs]

Figure 3-22 Select Substance Screen



The Select Substance screen has various means of searching substances. This section only describes the procedures of inputting information. For detailed functions of the substance search, refer to "3.6.1 Select Substance Screen (Detailed Description) (Page 26)."

## Entering Substance Concentration

After selecting the substance, enter the concentration in the material.

### 3.4.2. Concerned Regulation or Other Standards Indicated by JAMP

When you select a substance, the applicable flag is automatically entered, based on the substance information held in the external list.

Usually you do not have to manually enter the applicable flag. However, you are allowed to manually enter the applicable flag based on the knowledge of the issuing company in case of mistakes in the data in the external list.

Relevant Standard *1											
JP01	JP02	JP03	EU01	EU02	EU03	EU04	EU05	EU06	OT01	IA01	IA02
Applicable	Applicable	Applicable	Applicable	Applicable	Applicable	Applicable	Applicable	Applicable	Applicable	Applicable	Applicable

Figure 3-23 Applicable Field (Shown in one horizontal row in fact)



Since the rule for entering options for the applicable flag has changed in Ver. 4.0, importing an earlier version of MSDSplus may cause an input error in the error check. In this case, if you update the substance information, the options are also updated to those compliant with Ver. 4.0.

#### **JP01**

"1" is entered as for earlier versions, if it is applicable.

#### **JP02**

"1" is entered as for earlier versions, if it is applicable.

#### **JP03**

"1" is entered as for earlier versions, if it is applicable.

#### **EU01 (RoHS)**

"1" is entered as for earlier versions, if it is applicable.

#### **EU02 (ELV)**

"1" is entered as for earlier versions, if it is applicable.

#### **EU03 (CLP Annex VI CMR 1.2)**

"1" is entered as for earlier versions, if it is applicable.

**EU04 (REACH Annex XVII)**

"1" is entered as for earlier versions, if it is applicable. Some of the declarable substances are transferred separately POPs Annex I.

**EU05 (SVHC)**

In earlier versions, "1" was entered if it is applicable. The input options have been changed to "C" and "A"

- C: Candidate List
- A: Authorization

**EU06 (POPs Annex I)**

It was transferred from REACH Annex XVII and newly added.

**OT01 (ESIS PBT)**

"1" is entered as for earlier versions, if it is applicable.

**IA01 (GADSL)**

In earlier versions, "P" "D" or "P/D" was entered as necessary. The input options have been changed to "P" "D" and "D/P"

- P: Prohibited
- D: Declarable
- D/P: Applicable to both P and D

**IA02 (IEC62474/JIG)**

In earlier versions, "A" or "B" was entered as necessary. The input options have been changed to "R" "A" and "I"

- R: Regulated, corresponding to "Criteria 1" under IEC62474
- A: For Assessment Only, corresponding to "Criteria 2" under IEC62474
- I: For Information Only, corresponding to "Criteria 3" under IEC62474

### 3.5. Operating the Composition List Sheet

This section describes the operation of the buttons displayed at the top of the composition list sheet.

All Clear										
Delete selected row		Update Substance Info		Error Check		Temporarily SAVE		Export XML		
Substance						Relevant Standard *1				
Select		Add				JP01	JP02	JP03	EU01	EU02
Substance Name		CAS Number		Max. Concentration		Remarks *2		Applicable	Applicable	Applicable
*		*		*						

**Figure 3-24 Operating Buttons in the Composition List**

#### 3.5.1. All Clear Button

Click the "All Clear" button to initialize (clear all the inputs in) the Composition List.

Note that if this button is clicked in the middle of an input process, all the content is erased and cannot be returned.

### 3.5.2. Selected Row Delete Button

The selected row is deleted by clicking this button.

Note that the deleted rows cannot be returned.



### 3.5.3. Update Substance Info Button

By clicking the "Update Substance Info " button in the Composition List Sheet, update of the substance information in the Composition List to the content of the external list may be made.

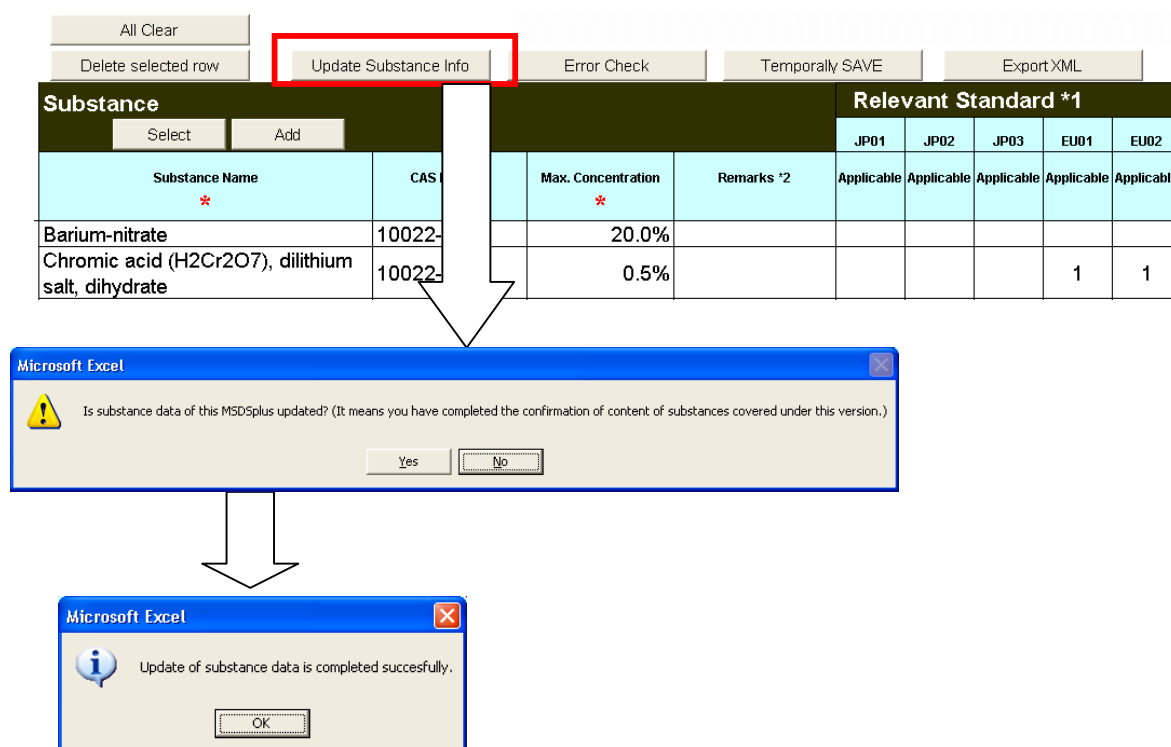


Figure 3-25 Substance Info Update

When you updating the substance information, a confirmation dialog is displayed. If "Yes" is selected, the following information is updated.

- The "Format Version" in the General Information Sheet is updated to "Ver. 4.1."
- The version number of the "Substance List" in the General Information Sheet is updated to the same number as the external list that is currently used.
- All the applicable flags and the substance names in the composition list sheet are overwritten based on the content of the external list you are currently using.

These are individually explained as follows:

#### Updating the General Information Sheet "Format Version"

For an earlier version of MSDSplus, the format conversion is also performed concurrently with the updating of the substance information. This is because Ver. 4.0 and Ver. 4.1 do not accept descriptions based on an earlier version of the Substance List.

#### Updating the Version Number of the General Information Sheet "Substance List"

The Version Number indicates when the MSDSplus was entered based on the list. Because the applicable flag is updated by updating the substance information, the MSDSplus is entered based on the content of the external list that is being used at the time.

**Updating the General Information Sheet "PBT," "GADSL," and "JIG" Coverage**

In Ver. 4.0 and 4.1, it is required to make the PBT, GADSL, and IEC62474/JIG reporting targets.

The MSDSplus selected as "not covered" in an earlier version will also be changed as a reporting target by updating the substance information as Ver.4.0 and 4.1. Please actually check the applicability of the PBT, GADSL, and IEC62474/JIG before distributing the information.

**Updating the Composition List 's Applicable Flag**

By updating the substance information, the applicable flag in the component list is overwritten based on the content of the external list that's currently used. In this case, all the applicable flags manually entered are also replaced with the content of the external list.

If the substance list is updated by adding the SVHC, the substance information of the existing MSDSplus may also be updated. However, if 100% of the information is not entered, the information of the substances that were not covered may be missing. Please take special caution on this point when updating the substance information of the MSDSplus received from the supplier.

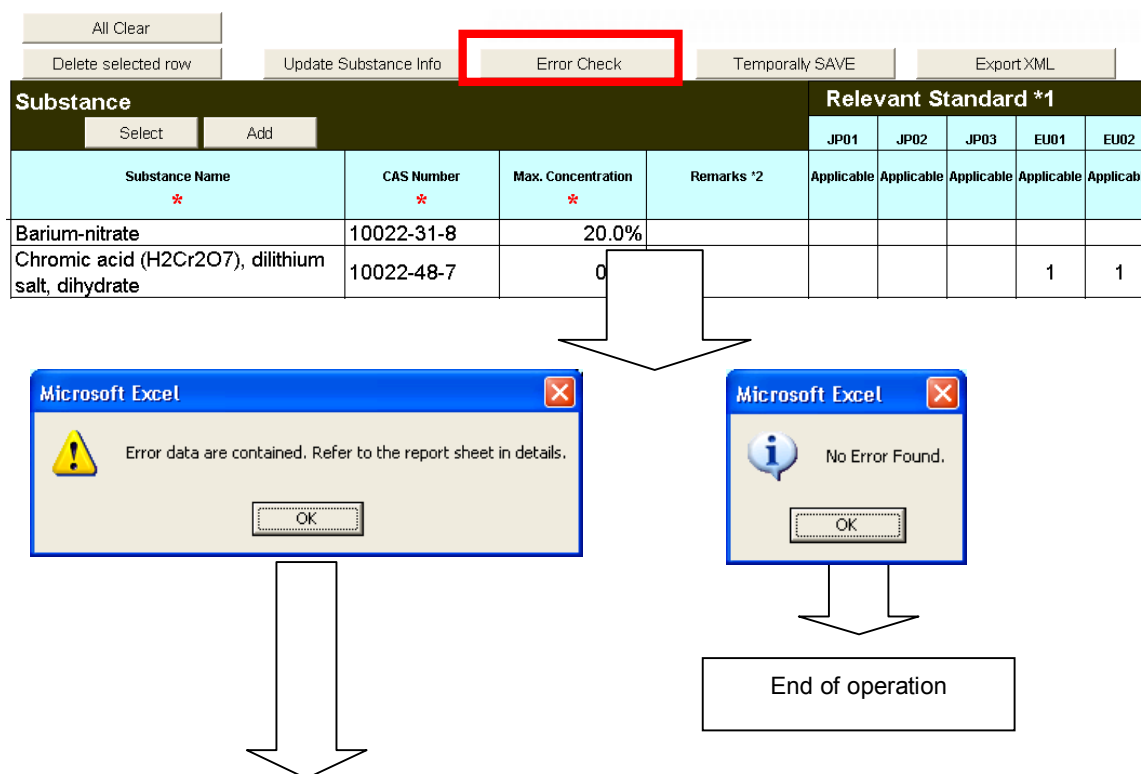


The substance information in the composition list is updated by the content of the external list that is currently used. If an old version of the external list is used, the substance information will not reflect the latest information. Please check whether the external list is the latest and then perform the updating process.

### 3.5.4. Error Check Button

You can use the "Error Check" button to check whether the entered information is not out of the export rule of the MSDSplus.

After entering information, click the "Error Check" button in the composition list sheet. Then the tool checks whether incorrect information is entered in the General Information sheet, Composition List sheet, and Requester Information sheet, and shows the result.



#### Check result

No.	Category	Sheet	Row	Item Name	Description
1	Error	General Information	14	Manufacturer Name	"Manufacturer Name" is Required field.
2	Error	General Information	15	Product name	"Product name" is Required field.
3	Error	General Information	16	Alphanumeric	"Issuing Company Item Number" is Required field.

**Figure 3-26 Procedure of Error Check to Check Result**

If there is no error, only the completion message is displayed. If there are errors, a report sheet is displayed after the error message. Check the content and correct the errors.



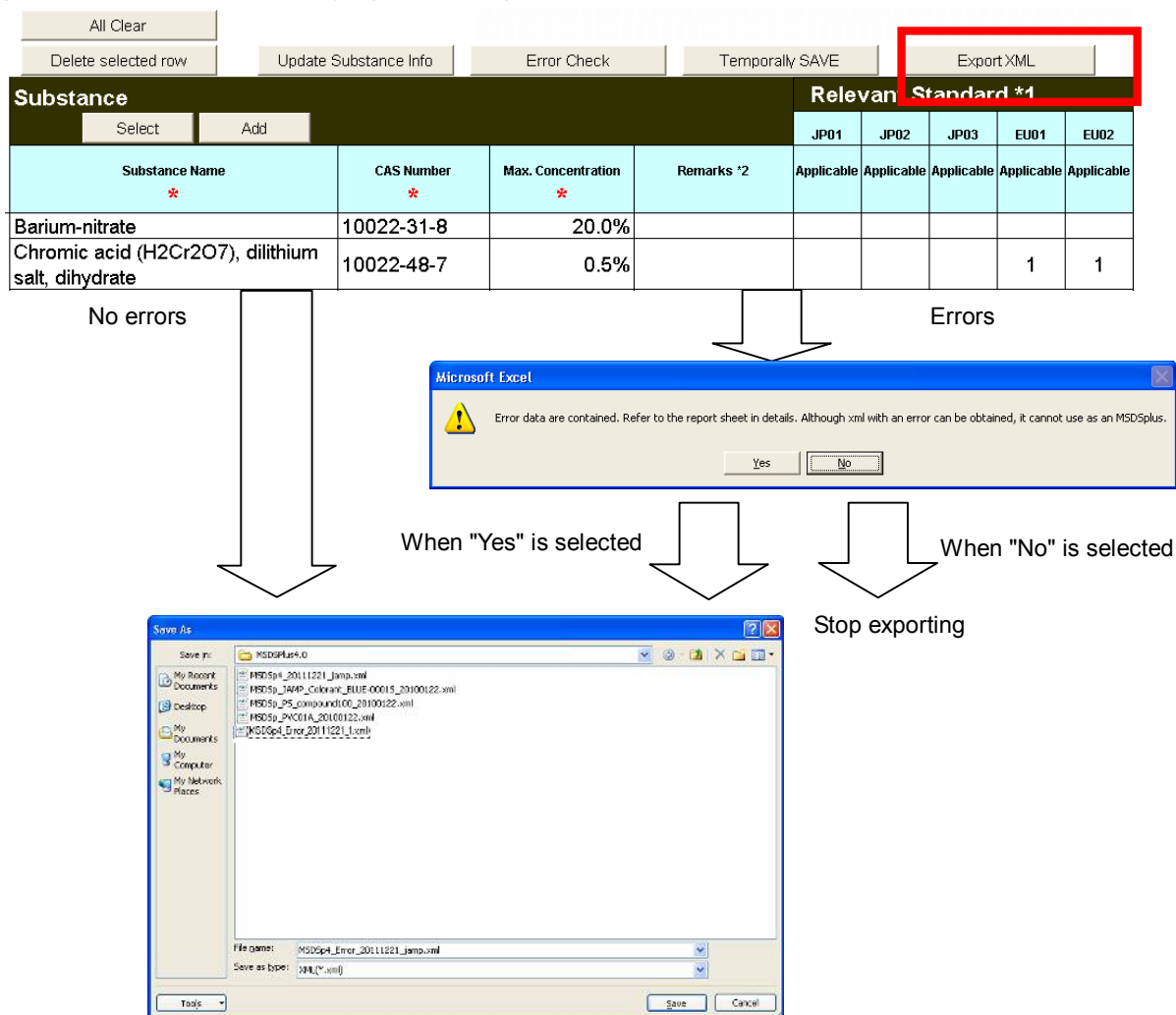
An error check is also automatically performed during XML export, which is described later.

### 3.5.5. Export XML/Temporally SAVE Buttons

This section describes a method of exporting the entered information as MSDSplus or temporarily saved MSDSplus.

#### Export XML

Click the "Export XML" button on the Composition list sheet screen on Page 27 of this document and the following screen appears for specifying the saving location and the file name.

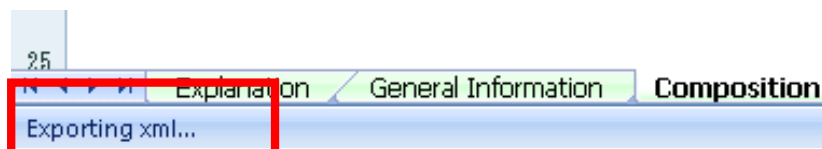


**Figure 3-27 Procedure of Exporting XML**

The file name is as follows:

- Formal version of MSDSplus: "MSDSp4\_yyyymmdd\_xxxx.xml" herein yyyymmdd represents date of issuing and xxxx represents issuing company item number
- MSDSplus containing errors: "MSDSp4\_Error\_yyyymmdd\_xxxx.xml" herein yyyymmdd represents date of issuing and xxxx represents issuing company item number
- MSDSplus containing errors: "MSDSp4\_Error\_yyyymmdd\_xxxx.xml" herein yyyymmdd represents date of issuing and xxxx represents issuing company item number

If the number of rows entered in the composition list is large, it may take a lot of time to export MSDSplus. During the export process, the bottom left status bar shows "Exporting xml..."



**Figure 3-28 Status Bar Showing "Exporting xml..."**

After exporting is completed, the completion message is displayed.



**Figure 3-29 XML Exporting Completion Message**

### **Temporarily SAVE**

You can use the "Temporarily SAVE" button in the Composition list sheet to temporarily save the entered information as an XML file.

In this case, an error check is not performed, unlike the case of XML export.

The file name is as follows:

- Temporarily saved MSDSplus: "MSDSp4\_Temp\_yyyymmdd\_xxxx.xml" herein yyyymmdd represents date of issuing and xxxx represents issuing company item number



The information of temporarily saving and containing errors is recorded not only in the file name but also in the content. Since the purpose of these files is to save the data in the middle of work, it is not permitted to distribute the information in this form to the public.

## **3.6. Selection Screen of Composition List Sheet**

### **3.6.1. Select Substance Screen (Detailed Description)**

This section describes the detailed functions of the Select Substance screen displayed by using the substance "SELECT" button.

**Select Substance**

Filter Substance list

☒ Filtering ☐ JP01 ☐ EU01 ☐ EU04 ☐ OT01  
☐ JP02 ☐ EU02 ☐ EU05 ☐ IA01  
☐ JP03 ☐ EU03 ☐ EU06 ☐ IA02

RESET

Search by

☒ Match Partial ☐ Match Whole

NAME CAS EC No.

Sort by

NAME CAS

Ver. 4.000

CAS	EC No.	NAME
10022-31-8	233-020-5	Barium-nitrate
10022-48-7	600-038-3	Chromic acid (H <sub>2</sub> Cr <sub>2</sub> O <sub>7</sub> ), dilithium salt, dihydrate
10022-68-1		Cadmium nitrate tetrahydrate, Cadmium nitrate
100231-59-2	309-359-0	Sodium [4-[[6-[[4-amino-6-chloro-1,3,5-triazin-2-yl)amino]-1-hydroxy-3-sulpho-2-naphthyl]azo]
1002-53-5		Dibutyl tin
10025-68-0	233-037-8	Diselenium dichloride
100258-44-4	309-388-9	Strychnidin-10-one, arsenite (1:1)
10026-03-6	233-053-5	Selenium tetrachloride
10026-17-2	233-061-9	Cobalt(II) fluoride
10026-18-3	233-062-4	Cobalt fluoride (CoF <sub>3</sub> )
10026-22-9	600-049-3	Cobalt nitrate
10026-23-0	233-064-5	Cobalt(2+) selenite
10026-24-1	600-050-9	Cobalt sulfate heptahydrate
10028-18-9	233-071-3	Nickel fluoride (NiF <sub>2</sub> )

CAS 10022-31-8 EC No. 233-020-5 SELECT CANCEL

Name Barium-nitrate

Group Name Barium compounds (organic or water soluble), selected

☐ JP01[Substance Cont. Law Class I] ☐ EU01[2011/65/EU RoHS] ☐ OT01[ESIS PBT Fulfilled]  
☐ JP02[Safety and Health Act Prohibited of Mfrg] ☐ EU02[2011/37/EU ELV] ☒ IA01[GADSL]  
☐ JP03[Poisonous and Deleterious Law] ☐ EU03[CLP Annex VI CMR 1.2] ☐ IA02[IEC62474/JIG]  
☐ EU04[REACH Annex XVII Except EU03]  
☐ EU05[REACH SVHC in Candidate List]  
☐ EU06[POPs]

**Figure 3-30 Description of Each Function of Select Substance Screen**

### **Filter Substance list**

Filters substances to display in the list by applicable regulation conditions (multiple conditions can be specified). For the correspondences between applicable regulation codes and regulation names, refer to the bottom of the screen.

### **Search by**

Searches substances applicable to the specified string from among those currently displayed in the list in the screen.

You can perform a Match Partial/Match Whole Search by the English Name, CAS No., or EC No. (If you click the "Search by" button in a row, the focus moves to the next substance matching the condition.)

### **Sort by**

Sorts the data displayed in the list in the order of the English Name or CAS No. of a substance. (Usually searched in the order of the CAS No.)

### **SELECT**

Select a substance from the list in the center of the screen, and detailed information is displayed at the bottom of the screen. Check the content and click the "SELECT" button to enter the data into the composition list.

### 3.7. Requester Information Sheet

This is not the information of the article itself but the input sheet for information of the company that requested the submission of MSDSplus.

#### Requester Information

		Import Template
<b>Company Name</b>		
<b>Company ID</b>	<b>ID Organizer</b>	
	<b>Entity ID</b>	
<b>Requester Department</b>	<b>Department Name</b>	
	<b>Address</b>	
<b>Contact Person at Requester Department</b>	<b>Name</b>	
	<b>Telephone Number</b>	
	<b>FAX Number</b>	
	<b>Email Address</b>	
<b>Submission Date</b>		
<b>Requester Item Number 1</b>		
<b>Issuing Company Item Number 1</b>		
<b>Requester Item Number 2</b>		
<b>Issuing Company Item Number 2</b>		
<b>Requester Item Number 3</b>		
<b>Issuing Company Item Number 3</b>		
<b>Requester Item Number 4</b>		
<b>Issuing Company Item Number 4</b>		
<b>Requester Item Number 5</b>		
<b>Issuing Company Item Number 5</b>		
<b>Requester Item Number 6</b>		
<b>Issuing Company Item Number 6</b>		
<b>Requester Remarks 1</b>		
<b>Requester Remarks 2</b>		
<b>Requester Remarks 3</b>		

**Figure 3-31 Requester Information Sheet**

By clicking "Import Template", you can copy the information entered in the "Requester Template" field in the "Setting" sheet, for the items from "Company Name" to "Email Address".

Inputting the Requester Information is optional itself. However, if you enter information, the Company Name is required.

## 3.8. Setting Sheet

Some of the items can be set from the "Setting" sheet to operate more conveniently in your environment.

### 3.8.1. Initial setting

#### Setting

#### Initial setting

	Save Settings
Select Language	2:English
Check External List Version	1:Check
Maximum Error Check	100

Figure 3-32 Setting Sheet Initial setting

#### Select Language

Select a language to use from Japanese, English, and Chinese.

#### Check External List Version

You can set whether or not to connect to the JAMP web site to see whether the external list being read is the latest version at the start of the tool. The default is "1:Check." However, when you use the tool in an environment where you cannot connect to the Internet, it may be more convenient to set to "2:No Check."

#### Maximum Error Check

You can set the number of errors that are detected before the operation is stopped during an error check (including XML export). The default is set to 100.

### 3.8.2. Publisher Template

Enter the publisher information. The information entered here is copied into the "General Information Sheet" when you click the "Import Template" button in the "General Information Sheet."

#### Publisher Template

Company Name	Alphanumeric *	
	Mother Language	
Company ID	ID Organizer	
	Entity ID	
Issuing Department	Department Name *	
	Address *	
	Telephone Number *	
	FAX Number	
	Email Address	
Department in Charge of Preparing AIS	Department Name	
	Telephone Number	
Remarks		

Figure 3-33 Setting Sheet Publisher Template



### 3.8.3. Requester Template

Enter the requester information. The information entered here is copied into the "Requester Information Sheet" when you click the "Import Template" button in the "Requester Information Sheet."

#### Requester Template

<b>Company Name</b>		
<b>Company ID</b>	<b>ID Organizer</b>	
	<b>Entity ID</b>	
<b>Requester Department</b>	<b>Department Name</b>	
	<b>Address</b>	
<b>Contact Person at Requester Department</b>	<b>Name</b>	
	<b>Telephone Number</b>	
	<b>FAX Number</b>	
	<b>Email Address</b>	

Figure 3-34 Setting Sheet Requester Template

### 3.8.4. Save Settings

If you want to save the current settings of the tool, click the "Save Settings" button to save the entered content and settings (the procedure is the same as saving Excel books).

## 4. Troubleshooting

---

### 4.1. If Error Occurs and You Cannot Proceed to Next Step

**A warning message appears to indicate noncompliance with the environment during startup.**

Check whether your PC environment is compliant with "1.2 System requirement (Page 1)."

**A run-time error occurs during operation.**

When you use the Input Support Tool, the sheet format may be distorted by operations such as copying and pasting cells. If you cannot return it to the original condition, download the Input Support Tool again from the JAMP web site.

If a run-time error continues by the same operation, contact JAMP, because it may be caused by a malfunction in the tool. We will make use of it for improving the quality of the tool.

**During startup, a message "This tool does not support your environment. Start it again with MSXML6.0 sp2 installed." appears.**

Install MSXML6.0 sp2 (msxml6-KB973686-enu-x86.exe) from the following web site:

<http://www.microsoft.com/download/en/details.aspx?id=9774>

### 4.2. Malfunction Due to Bugs in Microsoft Excel

**Each time you press a button, the button or character changes the size or moves.**

This phenomenon occurs in rare cases due to a malfunction in Microsoft Excel. Restart the tool without saving it. If you saved it with the layout distorted and cannot return it to the original condition, download the tool again.

### 4.3. Malfunction Due to Settings in Microsoft Excel

**If you enter a number larger than "1" in the % input field, a message "The entered value is not correct." appears.**

It occurs due to settings in Microsoft Excel. For Windows XP, select "Option" from the menu bar's "Tool" and put a check mark in "Automatically Enter Percentage" in the "Edit" tab.

**Macros do not work.**

Check whether either of the following is applicable:

- If the tool is directly opened from a compressed folder, for example, in the ZIP format, macros may not work normally. Extract it as a normal file and then execute the file.
- Although you can save files with the extension ".xlsx" in Microsoft Excel 2007 or later, files saved in this format do not work normally. Save the file in the ".xls" format and then execute it.

## Revision history

Item	Chapter and Section	Date of revision	Brief summary of revision	Reason for revision
1	General	January 12, 2012	Compliance with MSDSplus Ver. 4.00	To issue the initial version
2	3.3.1	March 1, 2012	(Wrong) ... existing or complex MSDSplus4.0 ... (Correct) ... existing MSDSplus4.0	To delete the unnecessary description
	3.3.1		(Wrong) the Earlier version of MSDSplus (File name: "MSDSp4_yyyymmdd_xxxx.xml") (Correct) ... the Earlier version of MSDSplus (File name: "MSDSp_yyyymmdd_xxxx.xml")	The wrong prefix referring to the previous file name corrected
	3.8.3		Figure 3-34 The asterisk "*" (Imperative) deleted	To correct the erroneous description
3	3.4.1	June 19, 2012	Figure 3-22 The RoHS directive official gazette number corrected	To correct the erroneous description
	3.6.1		Figure 3-30 The RoHS directive official gazette number corrected	To correct the erroneous description
4	General	June 25, 2013	Compliance with MSDSplus Ver. 4.1	To issue the initial version